



LOT 21

## **Marellan Shorthorns**

*"Bred for Bos Indicus Cows" Bull Sale*

**Tuesday 26th Sept 2017**

**NEW VENUE** "Emerald Downs" Emerald

Dear Beef Producers,

We are very excited to welcome you to our "Bred for Bos Indicus Cows" On-Property Bull Sale. This year our sale is at the NEW LOCATION of, "Emerald Downs", just north of Emerald on the Gregory Highway. The sale commences at 11am. Inspection is from 8am on Sale Day and any other time by appointment.

On offer will be 40 Shorthorn Bulls. All these bulls have been blooded and have been fully vaccinated with 3-day, Vibrio, Pestiguard and 7 in 1. The bulls have been semen tested and up to date weighs and scan will be available in the week before the sale. We are very pleased with this year's bulls. These bulls represent the very best in Shorthorn genetics, which have been bred for generations to prosper in the Queensland environment. This year's sale bulls are presented off grazing oats. The bulls are having a good finish, but most had a terrible start to their lives during the dry of 2015. Consequently, the bulls won't have the weight we would normally expect, but they certainly have the quality.

We are still in exciting times for the Australian Beef Industry. The Record prices of last year have temporarily subsided, as the industry is in a 'just add water' phase. However, increased Global demand for beef, growth in grass fed labels, and a continued focus on producing a high-quality product presents tremendous opportunities for our industry. Opportunities that, in our opinion, could be grasped by combining our Shorthorn Bulls with your Bos Indicus cows.

However, we invite you to come along on Tuesday 26th September and Judge for Yourself.

*Yours sincerely,  
Lincoln & Lisa Job*



**marellan**  
**shorthorns**

Any Age. Any Market. Every Tastebud!



**Marellan Shorthorns**

*"Bred for Bos Indicus Cows" Bull Sale*

Tuesday 26th Sept 2017

**NEW LOCATION "Emerald Downs" Emerald**

**Tuesday 26th September 2017**

11am

On property "Emerald Downs", Emerald

**PLEASE NOTE – NEW SALE LOCATION**

*Inspection from 8am on sale day*

---

**40 Shorthorn Bulls**

---

Selling Agents:



**Outside Agents Rebate:**

A 5% rebate will be offered to outside agents who introduce their clients more than 24 hours before the sale, attend the sale with them (or purchase on their behalf) and settle within 7 days.

**LINCOLN & LISA JOB**

**(M) 0404 083 438**

[www.marellan.com.au](http://www.marellan.com.au) | [lincolnandlisa@marellan.com.au](mailto:lincolnandlisa@marellan.com.au)

If you are unable to reach Lincoln on sale day or before,  
please feel free to call Lisa's mobile on 0411 311 323



**marellan**  
**shorthorns**

Any Age. Any Market. Every Tastebud!



**With you every step of the way.**

As well as working with Stud Stock producers, sharing industry knowledge and providing tailored advice on stud stock performance and management, we can also offer you expert auctioneers. From innovative conception and weaning solutions to national and global marketing options, our Stud Stock team can help you achieve more.

Andrew Meara 0427 210 634	Brian Wedemeyer 0409 694 696	Robert Murray 0419 644 813	Michael Smith 0428 541 711
Randall Spann 0429 700 332	Lisa Hedges 0427 891 367	Blake Munro 0428 862 469	<a href="http://www.elders.com.au">www.elders.com.au</a>



**Live it.**

## ELDERS LIVESTOCK CONTACTS

**EMERALD: DON TUCKER - BRANCH MANAGER 0428 841 666**  
**EMERALD: GARY MAYNE 0438 776 867**

**CHARTERS TOWERS: BRENT WILLIAMS 0417 003 731**  
**CHARTERS TOWERS: KEELEY EDWARDS 0439 397 504**

**CLERMONT: JAKE KENNEDY 0408 816 463**  
**SPRINGSURE: ROD CARPENTER 0428 736 593**

**MOURA: TOM CUSKELLY 0428 971 827**  
**BLACKALL: DES CUFFE 0428 581 001**

**ROMA: KEITH CROUCH 0428 745 924**  
**MITCHELL: DAVE PHILLIPS 0427 746 947**

**CHARLEVILLE: KEITH RICHARDSON 0427 457 487**  
**QUILPIE: SAM BARTLETT 0428 222 021**

**WINTON: MAVRYN REMFREY 0437 176 667**

**ANDREW SCOTT: LIVESTOCK ACCOUNT MANAGER 0428 824 824**  
**TIM SALTER (LONGREACH) LIVESTOCK AREA MANAGER 0429 649 693**



# Sale Information

**Inspection:** Inspection will be from 8am on sale day or ANY other time by appointment.

**Accommodation:** Emerald has numerous accommodation options.

**Airport:** “Emerald Downs” is situated only 10km from the Emerald Airport. Please call Lincoln (0404 08 34 38) or Lisa (0411 311 323) if would like us to arrange for you to be picked up from the airport.

**Breeding Soundness:** All bulls will be semen tested and examined for reproductive and structural soundness by Dr Ced Wise and Adam Wise.

**Supplementary Sheet:** Supplementary Sheets will be available in the week leading up to the Sale. Bulls will be weighed, scanned for EMA, IMF, Marble Fleck and Fat cover. Scrotal measurements have done by Dr Ced Wise & Adam Wise with the ‘reliable’ tension measurer, in accordance with the Australian Cattle Veterinarians.

**Delivery:** We will endeavour to help co-ordinate efficient delivery of the bulls where required. Trucks are welcome on sale day. All bulls sold outside of the ticks will be delivered and presented clean to the clearance dip at the vendor’s expense.

**Health:** All bulls have been vaccinated with 7 in 1, Pestiguard, 3-day and Vibrio. All bulls have been blooded with 3-germ. The Central Highlands is a ticky country; consequently, all bulls have been exposed to ticks on numerous occasions and will need to be cleared if they are sold to a tick free area.

**Delayed Payment:** Delayed payment may be available to some producers. Please speak to Lincoln prior to sale day.

**Mobile Phones:** “Emerald Downs” has very good mobile phone coverage.

**Directions:** “Emerald Downs” is located just north of Emerald on the Gregory Highway. Please see inside the back cover for a map.

**Sale Bulls:** Sale bulls have been prepared for their working lives. The have been prepared on forage oats, only for the final 8 weeks. Consequently, they may not have the finish that you may see at other sales. We are determined to ensure that our bulls can function and thrive in Central and Western Queensland.

**Semen Rights:** We have collected semen from a limited number of sale bulls. We retain 50% Semen rights on ALL LOTS. It is most likely that this will be absolutely irrelevant for virtually all buyers but please speak to Lincoln if you require any clarification.

**GST:** 10% GST will be added to the knock down price.

BreedPlan Percentile Bands for 2015 Born Calves																				
	Calving Ease DIR (%)	Calving Ease DTRS (%)	Gestation Length (days)	Birth Wt. (kg)	200 Day Wt. (kg)	400 Day Wt. (kg)	600 Day Wt. (kg)	Mat. Cow Wt. (kg)	Milk (kg)	Scrotal Size (cm)	Days to Calving (days)	Carcase Wt. (kg)	Eye Muscle Area (sq.cm)	Rib Fat (mm)	Rump Fat (mm)	Retail Beef Yield (%)	IMF (%)	Domestic Maternal Index (\$)	Export Maternal Index (\$)	Northern Maternal Index (\$)
Top 1%	+11.0	+7.3	-4.6	-0.2	+40	+58	+81	+79	+10	+2.9	-6.0	+48	+7.9	+1.6	+3.5	+2.6	+1.0	+53	+53	+65
Top 5%	+8.0	+5.4	-3.5	+0.8	+35	+52	+72	+66	+9	+2.4	-4.3	+44	+6.7	+0.8	+2.0	+2.1	+0.8	+45	+47	+57
Top 10%	+6.2	+4.5	-3.0	+1.3	+33	+48	+67	+60	+8	+2.2	-3.4	+41	+6.1	+0.5	+1.4	+1.9	+0.8	+42	+44	+53
Top 20%	+4.3	+3.4	-2.5	+2.0	+31	+44	+60	+54	+7	+1.9	-2.4	+38	+5.4	+0.1	+0.7	+1.6	+0.7	+38	+40	+48
Top 25%	+3.6	+2.9	-2.2	+2.2	+30	+43	+58	+51	+7	+1.8	-2.2	+37	+5.1	+0.0	+0.4	+1.5	+0.6	+36	+39	+46
Top 40%	+1.8	+1.7	-1.8	+2.8	+28	+39	+52	+45	+6	+1.5	-1.4	+34	+4.5	-0.4	-0.3	+1.2	+0.6	+32	+35	+41
Breed Average	+0.5	+0.6	-1.6	+3.0	+26	+36	+49	+42	+5	+1.4	-1.1	+33	+4.1	-0.5	-0.5	+1.0	+0.5	+29	+32	+37

# Our Breeding Philosophy

## Location

Marellan Shorthorns is situated right near the tropic of Capricorn in Central Queensland. There are very few British Bred bull breeding herds at or above this line. This gives our herd unique environmental selection pressure (for a British Bred herd). Our herd is in tick country. Tropically adapted Shorthorn Cattle – that's our aim.



*Marellan Natanya 1328 (P) (Brahman X Shorthorn) at 26 months.*

## Fertility Focus

Marellan Shorthorns has an uncompromising approach to fertility. In a breeding herd there is nothing as important as fertility. Our heifers are only joined for 2 cycles and our cows must re-breed whilst lactating, having a calf each year. We believe it is necessary that our bulls are bred from within this framework, so that they can go out and provide genetic improvement for our clients herds. Improving the overall fertility of the northern cow herd is one of the biggest production gains available to the industry. We want our bulls to be part of the solution rather than the problem.

## Carcase & Coverage

At Marellan we believe that both carcass shape and the ability to cover that shape are essential. It is essential to have fat to handle the ups and downs of seasons and it is essential to have muscle to have a marketable product. We tend not to chase the very highest EMA bulls in our breeding program, as they are often regressive on fat and IMF. We try to select for a balance of fat, muscle and IMF. Maintaining expectable levels of fat coverage also helps for meat quality and fertility. The 'Grass Revolution' is a great reminder of the necessity to have cattle that can finish well and quickly.

## Meat Quality

At Marellan Shorthorns we believe that the consumer is the most important person in the beef industry. Meat quality should not be an optional extra. We want Marellan bulls to help to increase MSA compliance rates and keep consumers happy with beef. We monitor and measure the meat quality of our herd by utilising the following;

1. Skin type: within Shorthorn Cattle smooth, soft skin seems to be a very consistent indicator of meat quality. We came to this conclusion after being part of selling beef direct to consumers at farmers markets for many years.
2. IMF scanning. We scan our cattle to measure and record IMF levels. This data is analysed ourselves and submitted to BreedPlan.
3. Marble Fleck Scanning. The Marble fleck is the scanned measurement of the distribution of fat through the eye muscle. We use this information to help us make breeding decisions in our herd. This is done when we scan for EMA & IMF. We believe that measuring marble fleck is more important than a simple IMF reading. Simply because good quality steak that is well marbled is actually about the distribution of the IMF. Some



# ies – Judge for Yourself

cattle have more fat blotches and some have a nice even distribution of that fat. The steak with a nice distribution tastes far superior than steak with blotches of fat that don't dissolve in the cooking process. Marble fleck score are a score from 1-5 in increments of 0.5. Sale bulls will be scanned for Marble fleck, this will be available by 22nd September at the latest. Please see Page 16 for more information on Marble flecks.

4. Meatworks feedback sheet. As all our cattle are individually sire identified we love to receive carcase feedback as it tells us a lot about the individual performance of the animals.



*Royalla Ida 8364 (P), dam of Lot 31.*

## Grass vs Grain

Grass fatten or feedlot? We are seeking to breed cattle that are versatile, that excel in both grass fattening system and feedlots, to give more market options. But we have a grass bias. Grass is the production system of nearly all breeding herds. It is our ambition to select cattle that are not only produced on grass, but can finish on grass as well. High quality cattle can be versatile, top performers in the paddock and the feedlot. From our observation, cattle that are bred with more of a feedlot bias are often slower to finish on grass. Marellan Shorthorns are bred to perform on grass; to breed, grow and finish within windows of opportunity. Our cattle are also award winning feedlot performers. Our last pen of 100 day fed cattle average over 2.6kg per day, with predominately 24-25month old steers averaging 404kg dressed. What is great about the last 12-18 months is that we are now seeing greater recognition of the grass-fed product. Our aim is – Grass with a feedlot option!

## Bos Indicus Blend

Marellan Shorthorn bulls are bred to use on Bos Indicus cows. We are trying to produce bulls with fertility, meat quality, and carcase with coverage. This combo can bring more market options, performance increases (through hybrid vigour), younger slaughter ages and better meat quality with the replacement female option for F1's. It has been great to receive feedback from clients about their F1 progeny. Many report some of their best ever growth rates, increased meat quality and reduced slaughter ages. The Bos Indicus female is the backbone of the northern beef industry. We do not have an ambition to change this, we just want our bulls to blend well with Bos Indicus cows to give our clients more market options and contribute to the improvement of their herds.

## Selection Pressure

When it comes to breeding cattle, Selection Pressure is my favourite slogan. At the end of the day Environmental Selection Pressure and Selection decisions imposed by Cattlemen and women shape the type of cattle produced. We believe on putting the right amount of pressure on our cattle (i.e. only joining heifers for 2 cycles) then wait for the 'cream to rise to the top'.



## Performance Recording

At Marellan Shorthorns we are committed to performance recording. We believe that wise decisions are made by using the best information possible. We measure and record the weights of our cattle from birth. We submit this data to BreedPlan as well as analysing it ourselves. In addition to performance traits, feedback sheets and scanning, we also assess the shape of calves at birth, dam udder quality, coat type and now the Tick Magnet Scores.

# MARELLAN SAMUEL (P)

# LOT 1

ID: JOBL002

BORN: 15/01/15 (32 Mths)

Roan



MARELLAN MR SLICK (P)  
**MARELLAN PROPHET (P) (Red)**  
 MARELLAN IDA 9442 (P)  
 MARELLAN IRON BULL (P)  
**MARELLAN WYLIE 9909 (P) (White)**  
 WYNONA BRED

### Top 20% Birth Wt

A striking roan to start our 2017 Sale. Samuel has length, with carcass and doing ability. The first of many good Prophet sons.

Weight	Fat	EMA	IMF	Fleck	Scrotal

BWT,200WT(x2),400WT,600WT(x2)

CE	CEDtrs	Gest	BW	200	400	600	MCW	MILK	SS	DTC	CWT	EMA	RIB FAT	RUMP FAT	RBY	IMF	Dom\$	Exp\$	Nth\$
+2.4			+2.0	+26	+39	+51	+37	+2	+1.5		+33	+3.5	-0.6	-0.6	+1.2		\$32	\$32	\$42
27%			67%	62%	64%	66%	49%	28%	43%		45%	28%	30%	30%	27%				

Purchaser: \_\_\_\_\_ Price: \$ \_\_\_\_\_

# MARELLAN STORMERS L147 (P)

# LOT 2

ID: JOBL147

BORN: 2/08/15 (25 Mths)

Roan



YAMBURGAN LOCKYER 13TH (P)  
**NERO LOCK EYE POPPER E027 (P) (Roan)**  
 NERO Y2K HONOUR X014 (P)  
 MARELLAN ROYALLA BLODD  
**MARELLAN CADBURY B622 (P) (Roan)**  
 YOOROOGA BRED

### Top 15% 200Wt, Top 20% 400Wt & Carcase Wt, Top 10% 600 Wt

A good growthy roan bullock producer. I like the combination of softness and performance in this bull. Please note; Stormers is not a bull to consider joining to heifers.

Weight	Fat	EMA	IMF	Fleck	Scrotal

200WT,600WT(x2),SS

CE	CEDtrs	Gest	BW	200	400	600	MCW	MILK	SS	DTC	CWT	EMA	RIB FAT	RUMP FAT	RBY	IMF	Dom\$	Exp\$	Nth\$
-5.2	-2.1		+4.8	+32	+45	+68	+53	+3	+1.6	+0.7	+38	+4.5	-0.5	-0.3	+1.2	+0.3	\$20	\$23	\$34
27%	25%		47%	52%	51%	62%	44%	27%	60%	31%	43%	30%	32%	32%	30%	27%			

Purchaser: \_\_\_\_\_ Price: \$ \_\_\_\_\_

# MARELLAN SEREVI (P)

ID: JOBL171 BORN: 18/06/15 (27 Mths) Roan

# LOT 3



Marellan Pom, sire of numerous sale lots.

SPRYS TRUE BLUE Y033 (P) (ET)  
**MARELLAN POM (P) (Red)**  
 MARELLAN CAMELOT 0078 (P)  
 MARELLAN FERRARI (P)  
**MARELLAN SUSAN 8198L (H) (White)**  
 MARELLAN SUSAN 4261 (P)

**Top 10% Calving Ease Direct, Gestation Length, Milk & Rib Fat. Top 15% Calving Ease Daughters, Birth Wt & Rump Fat**

The first son of Pom to be offered. A roan with growth and performance. Serevi is a good doing bull that will produce good bullocks that would excel on grass or feedlot. PLEASE NOTE. Serevi carries more hair than most of the other bulls.

Weight	Fat	EMA	IMF	Fleck	Scrotal

CE,200WT,600WT(x2),SS

CE	CEDtrs	Gest	BW	200	400	600	MCW	MILK	SS	DTC	CWT	EMA	RIB FAT	RUMP FAT	RBY	IMF	Dom\$	Exp\$	Nth\$
+7.1	+5.3	-3.2	+1.5	+20	+24	+31	+22	+8	+1.0	-1.5	+23	+2.5	+0.6	+1.2	-0.2	+0.5	\$33	\$34	\$39
42%	35%	45%	63%	65%	64%	70%	58%	44%	67%	41%	54%	46%	49%	49%	45%	40%			

Purchaser: \_\_\_\_\_ Price: \$ \_\_\_\_\_

# MARELLAN SPRINGBOK (P)

ID: JOBL151 BORN: 7/07/15 (26 Mths) Roan

# LOT 4



SPRYS TRUE BLUE Y033 (P) (ET)  
**MARELLAN POM (P) (Red)**  
 MARELLAN CAMELOT 0078 (P)  
 MARELLAN HALLS CREEK (P)  
**MARELLAN CHERIE 7183K (P) (Roan)**  
 MARELLAN CHERIE I5143 (P)

**Top 5% Calving Ease Direct. Top 10% Birth Wt. Top 15% Calving Ease Daughters, Gestation Length. Top 20% Export Index. Top 25% IMF**

Springbok is a moderate framed bull with a strong topline and thick rump. He is a super quite bull. His maturity pattern indicates that he would be ideal for producer aiming to sell at younger ages. We retained Pom because of his unique scan data, high IMF with large actual EMA.

Weight	Fat	EMA	IMF	Fleck	Scrotal

CE,200WT,600WT(x2),SS

CE	CEDtrs	Gest	BW	200	400	600	MCW	MILK	SS	DTC	CWT	EMA	RIB FAT	RUMP FAT	RBY	IMF	Dom\$	Exp\$	Nth\$
+9.3	+5.8	-2.9	+1.2	+21	+28	+37	+32	+5	+0.7	-0.4	+29	+3.3	-0.7	-1.1	+0.8	+0.6	\$34	\$41	\$41
39%	32%	43%	62%	64%	63%	69%	57%	43%	65%	38%	52%	41%	44%	44%	40%	36%			

Purchaser: \_\_\_\_\_ Price: \$ \_\_\_\_\_

# Triangle of Profit

## Environmental Survivability

If cattle can't survive in their environment any other traits that they may have is irrelevant. Some country is obviously harder than other. Ultimately the composition of a cow herd is mainly determined by country. Other genetics then can work with the base to achieve more market options and the 'triangle of profit'.

## Triangle of Profit

For the Northern Beef Industry to remain profitable, sustainable and increasingly relevant on the world stage I believe that there are 3 essential traits that must come together; Environmental Survivability, Performance and Meat Quality. This trinity of traits forms the backbone of what we are trying to achieve with our Shorthorn Cattle, and their crosses. Each of the 3 traits are quite easy to select for in isolation. The tricky part is combining the 3 in the one animal or cross. Especially given that the 3 are antagonistic traits, they don't naturally come together. Real genetic progress (& increased market access and options) is made when we can identify the individuals and lines of cattle that combine all 3.

## Performance

Cost of production, cost of kg of beef produced, kg of beef for 100mm rainfall, calving rates, re-bred rates – whatever your terminology it all amounts to the same issue – Cattle must perform, they must have fertility, optimal growth, weight for age and the ability to finish.

## Meat Quality

The Australian Beef industry must be more than just kg of beef produced. Other players in the worldwide protein market can beat us on cost, so meat quality is part of the solution for sustainable profitability. Meat quality has become and is becoming more important than ever, to give more Market access/options and to Satisfy our Customer.

MEET THE TEAM  
WHO CAN HELP  
WITH YOUR  
SUCCESS STORY

Give your local Agribusiness Specialist a call, and let's see how we can help you and your future goals.

Vern Ezzy  
District Manager  
Emerald  
0409 362 328  
[vernon.ezzy@suncorp.com.au](mailto:vernon.ezzy@suncorp.com.au)

Craig Slack  
Relationship Manager  
Emerald  
0429 198 950,  
[craig.slack@suncorp.com.au](mailto:craig.slack@suncorp.com.au)

LET'S GET DOING

SUNCORP 

# MARELLAN SPY MISSION (P)

# LOT 5

ID: JOBL008 BORN: 18/01/15 (32 Mths) Red



MARELLAN MR SLICK (P)  
**MARELLAN PROPHET (P) (Red)**  
 MARELLAN IDA 9442 (P)  
 NUNYARA FRONT RUNNER (P)  
**MARELLAN MOLLY I5027 (P) (Roan)**  
 MARELLAN MOLLY 2323 (P)

**Top 5% Calving Ease Direct, Domestic Index, Export Index & Northern Index. Top 10% Birth Wt & Days to Calving. Top 20% Carcase Wt, Scrotal Size & Calving Ease Daughters. Top 25% Gestation Length**

A slick skinned bull with a great constitution. Spy Mission has a meaty carcase and the ability to lay down fat over that carcase. Molly 5027 is a favourite, a cow with a very low tick burden. We have always liked the scrotal and body type of this bull.

Weight	Fat	EMA	IMF	Fleck	Scrotal

BWT,200WT(x2),400WT,600WT(x2)

CE	CEDtrs	Gest	BW	200	400	600	MCW	MILK	SS	DTC	CWT	EMA	RIB FAT	RUMP FAT	RBY	IMF	Dom\$	Exp\$	Nth\$
+8.2	+4.9	-2.2	+1.0	+27	+41	+57	+44	+6	+1.9	-3.7	+39	+3.8	-0.8	-1.1	+1.4	+0.3	\$48	\$48	\$59
37%	29%	34%	72%	66%	67%	70%	56%	40%	51%	31%	51%	39%	41%	41%	37%	32%			

Purchaser: \_\_\_\_\_ Price: \$ \_\_\_\_\_

# MARELLAN STAR STRUCK (P) (ET)

# LOT 6

ID: JOBL020 BORN: 14/02/15 (31 Mths) Red



WAUKARU PATENT 8161 (IMP USA) (P) (ET)  
**WAUKARU ORION 2047 ET (P) (Red)**  
 WAUKARU 464 RED NAN 814 ET (P)  
 MARELLAN EMPEROR (P)  
**ROYALLA PRINCESS MARGIEJ6258 (P) (Red)**  
 ROYALLA PRINCESS MARGIE 2206 (P) (ET)

**Top 10% Carcase Wt & Retail Yeild. Top 15% EMA. Top 25% Milk**

Star Struck is a thick, muscular bull with good mobility. Will breed beefy bullocks with shape. Less fat than some but still very functional, especially if ice-cream is used in the fattening process. Dam has 4 daughters in our herd.

Weight	Fat	EMA	IMF	Fleck	Scrotal

BWT,200WT(x2),400WT,600WT(x2)

CE	CEDtrs	Gest	BW	200	400	600	MCW	MILK	SS	DTC	CWT	EMA	RIB FAT	RUMP FAT	RBY	IMF	Dom\$	Exp\$	Nth\$
-6.0	+1.9	-1.1	+3.6	+35	+46	+60	+42	+7	+0.5	+3	+41	+5.7	-0.8	-2.0	+2.0	+0.2	\$20	\$22	\$28
44%	35%	51%	71%	65%	67%	64%	56%	43%	54%	35%	50%	48%	50%	50%	45%	40%			

Purchaser: \_\_\_\_\_ Price: \$ \_\_\_\_\_

# MARELLAN STOIC (P)

ID: JOBL195

BORN: 8/06/15 (27 Mths)

Roan

# LOT 7



WEEBOLLABOLLA THEODORE T85 (P)

**ROYALLA IMITATOR (P) (Roan)**

ROYALLA DREAM DATE 2014 (P)

WARRABERRY FARLEY (P)

**WARRABERRY CHANCE J141 (P) (Roan)**

YAMBURGAN C323 (P)

**Top 10% Export Index, Northern Index & Calving Ease Direct. Top 15% Domestic Index. Top 20% Rib Fat. Top 25% Calving Ease Daughters & Rump Fat**

Stoic is a big upstanding bull that has great constitution, the ability to do well in dry seasons. Stoic shows a strong influence of his grandsire Theodore, whom I consider to be the greatest Shorthorn bull that I have ever known. A soft skinned bull with a smooth muscle pattern and a great outlook. Another son of Imitator sold for \$19,000 last year.

Weight	Fat	EMA	IMF	Fleck	Scrotal

CE,BWT,600WT(x2),SS

CE	CEDtrs	Gest	BW	200	400	600	MCW	MILK	SS	DTC	CWT	EMA	RIB FAT	RUMP FAT	RBY	IMF	Dom\$	Exp\$	Nth\$
+7.1	+3.8	-0.9	+2.4	+27	+38	+56	+38	+6	+1.4	-0.9	+34	+4.1	+0.1	+0.4	+0.7	+0.5	\$41	\$45	\$55
38%	33%	33%	60%	59%	59%	66%	52%	36%	65%	36%	49%	40%	42%	42%	39%	36%			

Purchaser: \_\_\_\_\_ Price: \$ \_\_\_\_\_

## Meat Quality – Who should take Responsibility?



Earlier in the year we were fortunate enough to take the kids on a holiday to the Great Barrier Reef, just north Cairns. During our week away we purchased beef 4 times.

The first was a grass fed branded product from NSW. These Porterhouse were a little light in colour, but once cooked had acceptable flavour. Out of 10 I would score this steak at about 7. The next time was at a restaurant at Kuranda. It was a Scotch fillet, a score of 2 out of 10 would probably an overstatement. I enquired where they got their beef and got the typical, 'I've got no idea' answer. The third occasion was a porterhouse again but this time from a butcher's shop. It was a breed specific brand from a NSW processor. It looked OK, but had very little flavour at all. Score 5 out of 10. The final steak was a steak sandwich from a service station restaurant. It was a scotch fillet, score 6.5 out of 10, considering that this was a quick meal from a mid-range quality

service station. That's a satisfaction strike rate of 50%. Would you buy another pair of Ariat Boots or a Land Cruiser ute if they only meet your legitimate expectations 50% of the time? Will consumers and tourists keep coming back to beef if they are satisfied 50% of the time or less?

Within the world-wide animal protein commodity market, I believe the Australian Beef Industry must be on the good end of the quality spectrum. As we are never going to be able to compete on cost. As an industry, there is becoming a much greater focus on meat quality and customer satisfaction. Meat quality opens up markets, market opportunities and allows us to retain and grow our customer base. Sometimes the price premium is minor and sometimes it is significant. But either way who's going to take responsibility for meat quality if we (the Beef Industry) don't!



# MARELLAN SAMOA (P)

ID: JOBL074

BORN: 28/07/15 (25 Mths)

White

# LOT 8



YAMBURGAN EMPEROR E103 (P)  
**MARELLAN PRINCE CASPIAN (P) (ET) (Roan)**  
 MARELLAN ISOBEL 7152 (P)

MARELLAN LUDWIG 8267 (P)  
**WARRABERRY MEME G45 (P) (White)**  
 WARRABERRY MEME 14 (P)

**Top 1% Rib Fat. Top 5% Rump Fat. Top 15% Scrotal Size. Top 20% Days to Calving. Top 25% IMF**

Carcase.. and a little more carcase. Samoa is a strong boned bull with muscularity and doing ability. Prince Caspian is a meat quality sire. I'd love to see the roan Bos Indicus cross calves that Samoa will breed. Samoa has a pedigree stacked with easy doing genetics.

Weight	Fat	EMA	IMF	Fleck	Scrotal

CE,BWT,600WT(x2),SS

CE	CEDtrs	Gest	BW	200	400	600	MCW	MILK	SS	DTC	CWT	EMA	RIB FAT	RUMP FAT	RBY	IMF	Dom\$	Exp\$	Nth\$
-1.2	+2.9	-2.3	+3.5	+24	+29	+42	+29	+7	+2.1	-2.4	+25	+4.5	+1.6	+3.3	-0.4	+0.6	\$28	\$28	\$37
39%	31%	36%	71%	63%	62%	69%	54%	32%	67%	37%	49%	39%	40%	40%	37%	34%			

Purchaser: \_\_\_\_\_

Price: \$ \_\_\_\_\_

# MARELLAN SORRENTO L148 (P)

ID: JOBL148

BORN: 1/08/15 (25 Mths)

Roan

# LOT 9



MARELLAN LOADED (P)  
**MARELLAN PRIME RIB (P) (Red)**  
 MARELLAN MINSTERAL 9203 (P)

MARELLAN ROYALLA BLOOD  
**MARELLAN DESTINY A027 (P) (Roan)**  
 MARELLAN ROYALLA BLOOD

**Top 10% Birth Wt**

Sorrento is a really easy doing roan bull. A Loaded grandson with plenty of shape and outlook. We predict that his progeny will be quick to finish. An ideal bull for Charbray or Euro type females.

Weight	Fat	EMA	IMF	Fleck	Scrotal

200WT,600WT(x2),SS

CE	CEDtrs	Gest	BW	200	400	600	MCW	MILK	SS	DTC	CWT	EMA	RIB FAT	RUMP FAT	RBY	IMF	Dom\$	Exp\$	Nth\$
			+0.9	+19	+25	+27	+17	+6	+0.7	+0.4	+25	+3.0	-0.6	-0.9	+1.2	+0.4	\$26	\$29	\$29
			48%	55%	52%	62%	44%	26%	63%	30%	42%	29%	32%	32%	29%	25%			

Purchaser: \_\_\_\_\_

Price: \$ \_\_\_\_\_



Location: 9 Turrama Road, Clermont QLD  
Phone: 07 4983 1688 Fax: 07 4983 1779  
Website: [www.breckoncattleequipment.com.au](http://www.breckoncattleequipment.com.au)



# Leading Manufacturers of

~ Manual, Hydraulic and Pneumatic Crushers & Branding Cradles ~

~ Feeding Equipment ~ Roller Mills ~



**Breckon Cattle Equipment  
"BCE" proudly owned and  
manufactured by Gregory  
Fabrications in Clermont QLD.  
Contact them for all you cattle  
handling equipment.**



# MARELLAN SCRABBLE (P)

ID: JOBL081

BORN: 2/07/15 (26 Mths)

Roan

# LOT 10



SPRYS ADVANCER A114 (P)

**CRATHES FLYING SPUR F43 (P) (Roan)**

NEEARRA JUDITH 114 (P)

MARELLAN LOADED (P)

**MARELLAN JOYCE 2016 (P) (Roan)**

MARELLAN JOYCE 3241 (P)

**Top 5% Retail Yeild. Top 15% Scrotal Size & Carcase Wt. Top 20% 600Wt**

Carcase and coverage, 2 essential traits go together here. Scrabble is thick made and soggy. His progeny will be quick finishers. Joyce 2016 is our favourite Loaded cow, she is part of our ET program. Within our herd she has a 'top 1%' ability to maintain her body condition.

Weight	Fat	EMA	IMF	Fleck	Scrotal

CE,BWT,200WT,600WT(x2),SS

CE	CEDtrs	Gest	BW	200	400	600	MCW	MILK	SS	DTC	CWT	EMA	RIB FAT	RUMP FAT	RBY	IMF	Dom\$	Exp\$	Nth\$
0.0	-2.9	-1.1	+3.6	+29	+41	+60	+49	+6	+2.0	-1.5	+40	+4.9	-1.5	-2.8	+2.3	+0.4	\$28	\$34	\$38
40%	33%	32%	72%	67%	66%	72%	57%	40%	69%	39%	54%	45%	48%	48%	44%	39%			

Purchaser: \_\_\_\_\_

Price: \$ \_\_\_\_\_

# MARELLAN SUNDAY LUNCH (H)

ID: JOBL205

BORN: 30/07/15 (25 Mths)

Roan

# LOT 11



MARELLAN INDESTRUCTABLE (P)

**ROYALLA NEXT OF KIN F261 (P) (Roan)**

MARELLAN REDWING J6065 (P)

MARELLAN KNAPSACK (P)

**WARRABERRY MYRTLE G05 (P) (Red)**

WARRABERRY MYRTLE C56 (P)

**Top 10% Calving Ease Direct & Rib Fat. Top 15% Birth Wt. Top 20% Calving Ease Daughters & Rump Fat. Top 25% Milk**

Horned. A lovey roan with a long body and athleticism. Sunday Lunch will breed good big bullocks that can fatten.

Weight	Fat	EMA	IMF	Fleck	Scrotal

CE,BWT,600WT(x2),SS

CE	CEDtrs	Gest	BW	200	400	600	MCW	MILK	SS	DTC	CWT	EMA	RIB FAT	RUMP FAT	RBY	IMF	Dom\$	Exp\$	Nth\$
+7.5	+4.7	-1.3	+1.7	+21	+26	+32	+27	+7	+0.7	+0.2	+26	+3.5	+0.6	+0.8	+0.4	+0.4	\$32	\$34	\$38
42%	34%	39%	72%	64%	63%	69%	56%	36%	68%	38%	50%	41%	43%	44%	40%	35%			

Purchaser: \_\_\_\_\_

Price: \$ \_\_\_\_\_

# MARELLAN SKYWALKER (P)

# LOT 12

ID: JOBL035

BORN: 19/06/15 (27 Mths)

Red Little White



MARELLAN MR SLICK (P)  
**MARELLAN PROPHET (P) (Red)**  
 MARELLAN IDA 9442 (P)

MARELLAN NICODEMUS (P)  
**MARELLAN MOLLY 2137 (P) (Roan)**  
 MARELLAN MOLLY 9156M (P)

**Top 1% Northern Index & Scrotal Size. Top 5% Domestic Index, Export Index, 200Wt & Days to Calving. Top 10% 400Wt, 600Wt & Carcase Wt. Top 20% Calving Ease Direct. Top 25% Carcase Wt & Rib Fat**

One of the standout lots in this years sale. Skywalker is a mid-maturity bull that combines doing ability and muscularity. I love his depth and market versatility. Dam is a donor cow, from the Molly family. She is one of best Nicodemus daughters. The Molly's have come to the front after putting our herd in the ticks.

Weight	Fat	EMA	IMF	Fleck	Scrotal

CE,BWT,200WT,600WT(x2),SS

CE	CEDtrs	Gest	BW	200	400	600	MCW	MILK	SS	DTC	CWT	EMA	RIB FAT	RUMP FAT	RBY	IMF	Dom\$	Exp\$	Nth\$
+4.5		-1.4	+3.5	+36	+49	+70	+56	+6	+3.4	-5.7	+42	+5.2	0.0	+0.2	+1.0	+0.4	\$50	\$47	\$65
35%		32%	71%	65%	64%	71%	55%	32%	67%	35%	50%	39%	43%	43%	38%	32%			

Purchaser: \_\_\_\_\_ Price: \$ \_\_\_\_\_



# MARELLAN STYLO L110 (P)

ID: JOBL110

BORN: 13/07/15 (26 Mths)

Red & White

# LOT 13



YAMBURGAN EMPEROR E103 (P)

**MARELLAN PRINCE CASPIAN (P) (ET) (Roan)**

MARELLAN ISOBEL 7152 (P)

MARELLAN ELIMINATOR (P)

**WARRABERRY DAPHNE B38 (P) (Red and White)**

WARRABERRY DAPHNE 2ND (P)

**Top 1% Rib Fat. Top 5% Rump Fat. Top 15% Northern Index. Top 20% Calving Ease Direct, Calving Ease Daughters, Gestation Length, Birth Wt & Scrotal Size. Top 25% Milk & Domestic Index**

Stylo is another middle of the road, thick sire. A long bodied sire that combines muscularity and meat quality. Prince Caspian has bred high marbling progeny with finishing ability. Lots of doing ability on both sides of the pedigree.

Weight	Fat	EMA	IMF	Fleck	Scrotal

CE,BWT,600WT(x2),SS

CE	CEDtrs	Gest	BW	200	400	600	MCW	MILK	SS	DTC	CWT	EMA	RIB FAT	RUMP FAT	RBY	IMF	Dom\$	Exp\$	Nth\$
+4.4	+4.7	-2.5	+2.0	+22	+27	+42	+28	+7	+1.9	-2.7	+27	+4.5	+1.6	+3.2	-0.3	+0.5	\$37	\$37	\$50
39%	31%	35%	70%	63%	62%	69%	53%	33%	66%	37%	49%	39%	39%	39%	37%	34%			

Purchaser: \_\_\_\_\_

Price: \$ \_\_\_\_\_

# MARELLAN SIR LANCELOT (P)

ID: JOBL107

BORN: 3/08/15 (25 Mths)

Red Little White

# LOT 14



YAMBURGAN EMPEROR E103 (P)

**MARELLAN PRINCE CASPIAN (P) (ET) (Roan)**

MARELLAN ISOBEL 7152 (P)

NUNYARA FRONT RUNNER (P)

**MARELLAN CAMELOT 4248 (P) (Roan)**

MARELLAN CAMELOT 2165 (P)

**Top 5% Milk, Rib Fat & Rump Fat. Top 15% Calving Ease Daughters. Top 25% Scrotal Size & IMF**

Another high quality Prince Caspian son. Sir Lancelot is a long bodied muscular bull. Free striding with a good skin. Will bred top bullocks.

Weight	Fat	EMA	IMF	Fleck	Scrotal

CE,BWT,600WT(x2),SS

CE	CEDtrs	Gest	BW	200	400	600	MCW	MILK	SS	DTC	CWT	EMA	RIB FAT	RUMP FAT	RBY	IMF	Dom\$	Exp\$	Nth\$
-0.6	+5.7	-1.4	+3.3	+24	+30	+46	+37	+9	+1.8	-1.2	+28	+4.4	+1.3	+2.8	-0.3	+0.6	\$29	\$30	\$40
43%	35%	40%	72%	66%	65%	71%	56%	41%	69%	40%	52%	44%	45%	45%	42%	38%			

Purchaser: \_\_\_\_\_

Price: \$ \_\_\_\_\_

# Why Marble Fleck Scoring is SO important

**At Marellan we believe in making decisions for the long term benefit of the Beef Industry. Value-based payment systems will be a big part of the future. Discerning customers will continue to demand more meat quality but not 'unsightly products'. One of the most effective ways to genetically increase meat quality in breeding stock is through Marbling, measured by IMF (Intra Muscular Fat).**

The problem with simple IMF% measurements is that they don't take into account the distribution of Intra Muscular Fat. It is this even distribution that enables meat quality without unsightly and untasty lumps of fat. That is why we are so in favour of Marble Fleck Scores – which are a measurement of the evenness of the distribution of the IMF. The higher the score, the better the distribution. Please note the difference is Marbling Fleck of the two steaks pictured.

We look forward to a greater use of Marble Fleck scores and perhaps incorporation into EBV's. We think that it is necessary and inevitable due to the profound long term increases in meat quality that can be made by further utilising this measurement tool.

It is our ambition to match our quest for meat quality with a quest for production efficiencies. We believe that High Quality Beef needs to be produced in conjunction with fertility, weight for age and finishing ability. We do not believe in single trait selection. One of the most unique things about Marellan Shorthorn Bulls is their potential to increase both performance and meat quality.

We use these marble fleck scores as selection tool, it certainly influences the bulls we use. If as an industry we want to increase our overall market share and increase the satisfaction levels of our customers we must focus more on meat quality. Marble Fleck Scores are one tool to help us all do that. Up to date Marble fleck scores on our sale bulls will be available in the week before the sale.



**Top right:** Marellan Shorthorn steak

**Right:** Supermarket purchased steak

# MARELLAN STREAM (P)

ID: JOBL184

BORN: 10/07/15 (26 Mths)

Red

# LOT 15



SPRYS TRUE BLUE Y033 (P) (ET)

**MARELLAN POM (P) (Red)**

MARELLAN CAMELOT 0078 (P)

WEEBOLLABOLLA THEODORE T85 (P)

**MARELLAN MILLICENT 1202 (P) (Roan)**

MARELLAN MILLICENT 9195 (P)

**Top 1% Calving Ease Direct. Top 5% Calving Ease Daughters, Gestation Length & Birth Wt. Top 25% IMF & Export Index.**

A long bodied, good framed red. Lots of meat quality and doing ability genetics here.

Weight	Fat	EMA	IMF	Fleck	Scrotal

CE,200WT,600WT(x2),SS

CE	CEDtrs	Gest	BW	200	400	600	MCW	MILK	SS	DTC	CWT	EMA	RIB FAT	RUMP FAT	RBY	IMF	Dom\$	Exp\$	Nth\$
+11.0	+6.7	-3.7	+0.3	+18	+20	+27	+10	+6	+0.4	+0.9	+23	+3.1	-0.1	-0.5	+0.4	+0.6	\$30	\$39	\$37
41%	36%	51%	62%	64%	63%	69%	56%	42%	67%	41%	53%	45%	48%	48%	44%	40%			

Purchaser: \_\_\_\_\_

Price: \$ \_\_\_\_\_

# MARELLAN SOUTH WALES (P)

ID: JOBL064

BORN: 30/06/15 (26 Mths)

Red

# LOT 16



SPRYS TRUE BLUE Y033 (P) (ET)

**MARELLAN POM (P) (Red)**

MARELLAN CAMELOT 0078 (P)

MARELLAN JARROS (P)

**MARELLAN ANNIE 9153M (P) (Red)**

MARELLAN ANNIE 7014K (P)

**Top 5% Calving Ease Direct, Calving Ease Daughters & Birth Wt. Top 15% Gestation Length, IMF & Export Index**

A similar bull to lot 15. A good doing Pom son. The Pom progeny exhibit very good meat quality attributes.

Weight	Fat	EMA	IMF	Fleck	Scrotal

CE,BWT,200WT,600WT(x2),SS

CE	CEDtrs	Gest	BW	200	400	600	MCW	MILK	SS	DTC	CWT	EMA	RIB FAT	RUMP FAT	RBY	IMF	Dom\$	Exp\$	Nth\$
+8.3	+6.5	-2.8	+0.5	+17	+23	+31	+14	+4	+0.8	-0.2	+26	+2.6	-0.1	+0.1	+0.4	+0.7	\$34	\$43	\$42
39%	32%	46%	71%	66%	64%	71%	58%	41%	69%	40%	52%	43%	46%	46%	42%	37%			

Purchaser: \_\_\_\_\_

Price: \$ \_\_\_\_\_

# THE BOS IND



*Marellan Shorthorn X Brahman.  
Appleton Cattle Co, Alpha.*



*Marellan Shorthorn X Brahman.  
Appleton Cattle Co, Alpha.*



*Marellan Shorthorn X Droughtmaster.  
Appleton Cattle Co, Alpha.*



*Marellan Shorthorn X Droughtmaster. Appleton Cattle Co, Alpha.*

The Bos Indicus Female is the backbone of the Northern Beef Industry, even though Shorthorn Cattle came to Australia in 1800, and by later in that century accounted for almost 100% of the Northern Beef Industry.

At Marellan Shorthorns, we are not trying to turn back the clock, but illustrate that Shorthorns have proved their worth in Queensland for well over 150 years. Country will always determine the type and content of cows run in a Beef Enterprise.

However, we believe that the Shorthorn and Bos Indicus combination (in all its various forms) is the most influential blending the Australian Beef Industry has ever seen. We feel that the Shorthorn's ability to blend with Bos Indicus females is second to none.

We breed Shorthorn cattle, because in our opinion the right Shorthorns have more potential to blend with, and have a positive

# INDICUS BLEND

influence on the northern beef industry than any other breed.

Marellan Shorthorn Bulls are bred to blend with Bos Indicus Cows, and feedback is telling us that our bulls are Increasing Fertility, Increasing Market options, Increasing Meat Quality and Increasing Performance through hybrid Vigour, whilst allowing producers to retain a cow herd that fits their environment.

The Shorthorn X Bos Indicus female progeny create options; the option to sell off at young age, or the option to be retained as elite F1 females.

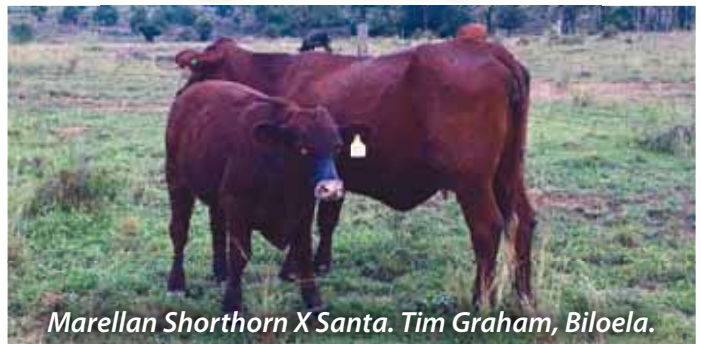
Now is the time to be making decisions for the future. We have put our herd in the ticky Central Queensland environment, because we want our herd to have similar environmental selection pressure as our clients. But it's not about what we think, so come along on September the 26th and Judge for Yourself!



*Marellan Shorthorn X Brahman.  
Benn Warden, Biloela.*



*Marellan Shorthorn X Droughtmaster.  
Appleton Cattle Co, Alpha.*



*Marellan Shorthorn X Santa. Tim Graham, Biloela.*



*Appleton Cattle Co, Alpha.*

# MARELLAN SIMPSON DESERT (P)

# LOT 17

ID: JOBL181

BORN: 24/07/15 (26 Mths)

Red



SPRYS TRUE BLUE Y033 (P) (ET)  
**MARELLAN POM (P) (Red)**  
 MARELLAN CAMELOT 0078 (P)  
 INVERARY ROLEX Z100 (P)  
**MARELLAN EDEL 7430K (P) (Red)**  
 MARELLAN EDEL 0J21 (P)

**Top 15% Milk. Top 20% Calving Ease Direct & Birth Wt. Top 25% Retail Yeild, IMF & Export Index**

A top shelf Pom son. Simpson Desert has magnificent fattening ability, near perfect skin and a soft muscle pattern.

Weight	Fat	EMA	IMF	Fleck	Scrotal

CE,200WT,600WT(x2),SS

CE	CEDtrs	Gest	BW	200	400	600	MCW	MILK	SS	DTC	CWT	EMA	RIB FAT	RUMP FAT	RBY	IMF	Dom\$	Exp\$	Nth\$
+4.8	+3.4	-2.0	+2.0	+22	+30	+41	+24	+8	+1.1	+0.2	+30	+3.4	-1.1	-2.0	+1.5	+0.6	\$30	\$40	\$39
38%	31%	41%	62%	64%	63%	69%	56%	42%	68%	38%	52%	41%	44%	44%	40%	36%			

Purchaser: \_\_\_\_\_

Price: \$ \_\_\_\_\_

# MARELLAN SYMPTOM (H)

# LOT 18

ID: JOBL153

BORN: 24/07/15 (26 Mths)

Red



MARELLAN LOADED (P)  
**MARELLAN PRIME RIB (P) (Red)**  
 MARELLAN MINSTERAL 9203 (P)  
 WEEBOLLABOLLA ZULU Z103 (P)  
**ROYALLA PRINCESS MARGIE7406K (P) (Roan)**  
 ROYALLA PRINCESS MARGIE 12TH (P) (ET)

**Top 10% Scrotal Size. Top 15% 200Wt. Top 20% Days to Calving**

Symptom is a powerful sire, great length of body and soundness. A thick bull that will breed top bullocks.

Weight	Fat	EMA	IMF	Fleck	Scrotal

CE,200WT,600WT(x2),SS

CE	CEDtrs	Gest	BW	200	400	600	MCW	MILK	SS	DTC	CWT	EMA	RIB FAT	RUMP FAT	RBY	IMF	Dom\$	Exp\$	Nth\$
+0.5	+0.3	-0.4	+4.0	+32	+40	+56	+51	+6	+2.3	-2.5	+35	+4.4	-0.4	-0.4	+1.1	+0.4	\$31	\$32	\$41
35%	28%	30%	60%	63%	62%	68%	55%	42%	67%	37%	51%	41%	44%	44%	40%	34%			

Purchaser: \_\_\_\_\_

Price: \$ \_\_\_\_\_

# MARELLAN SCOOPY DOO L166 (P)

# LOT 19

ID: JOBL166

BORN: 27/07/15 (25 Mths)

Red



YAMBURGAN LOCKYER 13TH (P)  
**NERO LOCK EYE POPPER E027 (P) (Roan)**  
 NERO Y2K HONOUR X014 (P)

MARELLAN ROYALLA BLOOD  
**MARELLAN KELPIE B654 (P) (Red)**  
 YOOROOGA BRED

**Top 10% 200Wt. Top 20% 600Wt. Top 25% 400Wt.**  
 A big, powerful red for Bullock breeders. Lots of meat and performance here, but Scooby Doo still retains the ability to fatten. Please note; Scooby Doo should NOT be joined to heifers. Join him to mature cows and he'll produce magnificent Bullocks.

Weight	Fat	EMA	IMF	Fleck	Scrotal

200WT,600WT(x2),SS

CE	CEDtrs	Gest	BW	200	400	600	MCW	MILK	SS	DTC	CWT	EMA	RIB FAT	RUMP FAT	RBY	IMF	Dom\$	Exp\$	Nth\$
-5.2	-2.1		+4.7	+33	+43	+60	+51	+6	+1.0	+1.8	+36	+4.5	-0.3	-0.3	+1.0	+0.3	\$17	\$17	\$27
27%	25%		48%	54%	51%	62%	44%	29%	63%	31%	43%	30%	32%	32%	30%	27%			

Purchaser: \_\_\_\_\_ Price: \$ \_\_\_\_\_

# MARELLAN SUPREMEATOR (P)

# LOT 20

ID: JOBL121

BORN: 1/08/15 (25 Mths)

Red



MARELLAN INDESTRUCTABLE (P)  
**ROYALLA NEXT OF KIN F261 (P) (Roan)**  
 MARELLAN REDWING J6065 (P)

MARELLAN KNAPSACK (P)  
**WARRABERRY FRED A G09 (P) (Red)**  
 WARRABERRY FRED A 14TH (P)

**Top 15% Rib Fat. Top 20% Rump Fat. Top 25% Milk**  
 A long bodied bull that has doing ability and performance. Supremeator will bred good bullocks.

Weight	Fat	EMA	IMF	Fleck	Scrotal

CE,BWT,600WT(x2),SS

CE	CEDtrs	Gest	BW	200	400	600	MCW	MILK	SS	DTC	CWT	EMA	RIB FAT	RUMP FAT	RBY	IMF	Dom\$	Exp\$	Nth\$
+3.5	+1.6	-0.5	+2.9	+26	+31	+44	+38	+7	+1.4	-0.6	+30	+4.2	+0.4	+0.7	+0.6	+0.5	\$30	\$33	\$40
41%	33%	39%	71%	63%	62%	69%	54%	34%	67%	37%	49%	40%	42%	42%	39%	34%			

Purchaser: \_\_\_\_\_ Price: \$ \_\_\_\_\_

# MARELLAN SLICK (P)

ID: JOBL082

BORN: 2/07/15 (26 Mths)

Red

# LOT 21



MARELLAN MR SLICK (P)  
**MARELLAN PROPHET (P) (Red)**  
 MARELLAN IDA 9442 (P)

WEEBOLLABOLLA THEODORE T85 (P)  
**MARELLAN AUGUSTA 2027 (P) (ET) (Roan)**  
 MARELLAN AUGUSTA 2100 (P)

Top 1% Domestic Index, Export Index, Northern Index & Scrotal Size. Top 5% Days to Calving & 600Wt. Top 10% Carcase Wt, Calving Ease Direct & 200Wt. Top 15% 400Wt. Top 20% Rib Fat & Birth Wt. Top 25% Calving Ease Daughters, Gestation Length & Rump Fat. At +\$73, Shorthorn bull will be sold at Auction this season with a higher Northern Maternal Index.

Slick is Slick. He combines smoothness, carcase and doing ability. I also like his athleticism and scrotal. Shows a strong influence of his grandsire, the great Theodore. Augusta 2017 is definitely in our top 1% for maintaining body condition. She will enter our ET program this summer. She is a full sister Marellan Indestructible, one of the all time best Theodore sons. Also a maternal sister to Marellan Augusta 2245, this years Sydney Royal Champion female.

Weight	Fat	EMA	IMF	Fleck	Scrotal

CE,BWT,200WT,600WT(x2),SS

CE	CEDtrs	Gest	BW	200	400	600	MCW	MILK	SS	DTC	CWT	EMA	RIB FAT	RUMP FAT	RBV	IMF	Dom\$	Exp\$	Nth\$
+7.8	+3.9	-2.3	+2.0	+33	+47	+73	+51	+6	+3.1	-5.8	+42	+4.6	+0.2	+0.6	+0.9	+0.3	\$55	\$53	\$73
39%	32%	35%	71%	65%	63%	70%	55%	37%	69%	40%	51%	40%	42%	42%	39%	35%			

Purchaser: \_\_\_\_\_ Price: \$ \_\_\_\_\_

## Selection Pressure – 16 becomes 7

**SIXTEEN BECOMES SEVEN.** Environmental selection pressure is the cornerstone of our breeding herd. Those that remain after we apply heavy selection pressure are the ones we want to breed from. A tropically adapted Shorthorn Herd is our aim. A group of 16 heifers from a small group of old cows (up to 14yr old's) shows selection pressure at work. On arrival the 16 heifers were up to date with vaccinations, they had been blooded but NO pre-emptive tick treatments were given. Three months after the 16 heifers arrived 4 had died. 16 become 12. The 12 heifers were brought to the yards, 1 of those 12 has more ticks on her than all the other combined. 16 becomes 11. That one was treated

and put in the cull mob. A further 2 months later, 4 heifers were in need of assistance. They were treated and put in the cull mob. 16 becomes 7. The remaining 7 were given animal health treatments and then subject the rest of our Selection Pressure on; Performance, Fertility, Conformation and Market Suitability. What we now have found is that our general cull rate, on females that have been born in Central Queensland, is very similar to what it was historically. Our tick cull rate on those 2nd generation females is only a fraction of our tick cull rate from the females that were introduced. Now it's time to grow our herd with the survivors as quick as possible.



# MARELLAN STAR (P) (ET)

ID: JOBL168

BORN: 30/08/15 (24 Mths)

Red

# LOT 22



MARELLAN MR SLICK (P)  
**MARELLAN PROPHET (P) (Red)**  
 MARELLAN IDA 9442 (P)  
 LACHLAN C335 (P) (ET)  
**MARELLAN CAMELOT 0078 (P) (Red)**  
 MARELLAN CAMELOT I5214 (P)

**Top 1% Northern Index. Top 5% Domestic Index & Export Index. Top 10% Calving Ease Direct, 600Wt, Days to Calving & Carcase Wt. Top 15% Scrotal Size, 200Wt & 400Wt. Top 20% Gestation Length. Top 25% Birth Wt & Milk.**

Slick Skinned. Star has tremendous smoothness and balance. A very similar sire to the previous lot. Camelot 0078 is a donor cow, with a model body type. She is also the dam of Pom and lot 24 & lot 39.

Weight	Fat	EMA	IMF	Fleck	Scrotal

200WT,400WT,600WT,SS

CE	CEDtrs	Gest	BW	200	400	600	MCW	MILK	SS	DTC	CWT	EMA	RIB FAT	RUMP FAT	RBY	IMF	Dom\$	Exp\$	Nth\$
+7.5	+3.3	-2.5	+2.2	+32	+47	+70	+51	+7	+2.1	-3.4	+42	+4.3	-0.5	-0.5	+1.2	+0.4	\$49	\$51	\$66
36%	26%	33%	62%	62%	63%	67%	54%	34%	66%	35%	49%	37%	40%	40%	36%	31%			

Purchaser: \_\_\_\_\_ Price: \$ \_\_\_\_\_



*Marellan Prophet (P)  
 – sire of numerous sale lots*

# MARELLAN SOUTH PORT (P)

# LOT 23

ID: JOBL131

BORN: 24/07/15 (25 Mths)

Red



MARELLAN MR SLICK (P)  
**MARELLAN PROPHET (P) (Red)**  
 MARELLAN IDA 9442 (P)  
 MARELLAN JINGOES (P) (ET)  
**MARELLAN LEMON MERINGUE 2145 (P) (Roan)**

Top 5% Domestic Index, Export Index, Northern Index & Calving Ease Direct. Top 10% Birth Wt, 600Wt & Carcase Wt. Top 15% Retail Yeild. Top 20% Scrotal Size & Days to Calving

Slick Skinned. Another slick Prophet son. South Port has a good carcase shape and doing ability.

Weight	Fat	EMA	IMF	Fleck	Scrotal

BWT,200WT,600WT(x2),SS

CE	CEDtrs	Gest	BW	200	400	600	MCW	MILK	SS	DTC	CWT	EMA	RIB FAT	RUMP FAT	RBY	IMF	Dom\$	Exp\$	Nth\$
+8.1			+1.3	+29	+42	+67	+46	+3	+1.9	-2.4	+43	+3.9	-1.1	-1.5	+1.8		\$45	\$49	\$63
31%			68%	61%	59%	67%	50%	26%	66%	32%	45%	30%	32%	32%	29%				

Purchaser: \_\_\_\_\_ Price: \$ \_\_\_\_\_

# MARELLAN SLICKSTER (H) (ET)

# LOT 24

ID: JOBL173

BORN: 28/08/15 (24 Mths)

Red



MARELLAN MR SLICK (P)  
**MARELLAN PROPHET (P) (Red)**  
 MARELLAN IDA 9442 (P)  
 LACHLAN C335 (P) (ET)  
**MARELLAN CAMELOT 0078 (P) (Red)**  
 MARELLAN CAMELOT I5214 (P)

Top 5% Export Index & Northern Index. Top 10% Domestic Index & Calving Ease Direct. Top 15% 600Wt. Top 20% Gestation Length, Birth Wt & Carcase Wt. Top 25% 200Wt & Milk.

Horned. As the name suggests he is Slick Skinned. A really athletic bull with a smooth muscle pattern and length, with a bit more length. Full brother to lot 22.

Weight	Fat	EMA	IMF	Fleck	Scrotal

200WT,400WT,600WT,SS

CE	CEDtrs	Gest	BW	200	400	600	MCW	MILK	SS	DTC	CWT	EMA	RIB FAT	RUMP FAT	RBY	IMF	Dom\$	Exp\$	Nth\$
+7.5	+3.3	-2.5	+1.8	+30	+41	+65	+47	+7	+0.9	-1.0	+39	+3.9	-0.5	-0.5	+1.1	+0.4	\$42	\$47	\$60
36%	26%	33%	62%	62%	63%	67%	54%	34%	66%	35%	49%	37%	40%	40%	36%	31%			

Purchaser: \_\_\_\_\_ Price: \$ \_\_\_\_\_

# MARELLAN SUPER SLICK (P)

ID: JOBL061 BORN: 28/06/15 (26 Mths) Red

# LOT 25



Marellan Nicodemus, grandsire of Lot 25 and many others.

MARELLAN MR SLICK (P)  
**MARELLAN PROPHET (P) (Red)**  
 MARELLAN IDA 9442 (P)  
 MARELLAN NICODEMUS (P)  
**MARELLAN JILLIAN 2131 (P) (Roan)**  
 MARELLAN JILLIAN 9139 (P)

**Top 15% Days to Calving, Scrotal Size, Domestic Index & Northern Index.**

Slick Skinned. Another smooth bodied Prophet son. Dam is a Nicodemus daughter. Super Slick appears to be a bull to use on heifers.

Weight	Fat	EMA	IMF	Fleck	Scrotal

CE,BWT,200WT,600WT(x2),SS

CE	CEDtrs	Gest	BW	200	400	600	MCW	MILK	SS	DTC	CWT	EMA	RIB FAT	RUMP FAT	RBY	IMF	Dom\$	Exp\$	Nth\$
+3.2		-1.7	+3.0	+29	+43	+56	+44	+5	+2.1	-2.9	+34	+4.2	-0.3	-0.3	+1.1	+0.3	\$40	\$38	\$50
34%		32%	71%	65%	64%	70%	55%	31%	68%	35%	50%	39%	42%	42%	37%	32%			

Purchaser: \_\_\_\_\_ Price: \$ \_\_\_\_\_

# MARELLAN SILK (P)

ID: JOBL047 BORN: 25/06/15 (27 Mths) Red

# LOT 26



MARELLAN MR SLICK (P)  
**MARELLAN PROPHET (P) (Red)**  
 MARELLAN IDA 9442 (P)  
 WEEBOLLABOLLA THEODORE T85 (P)  
**MARELLAN CARNATION 3061 (P)**  
 MARELLAN CARNATION 0313 (P)

**Top 1% Scrotal Size, Top 5% Calving Ease Direct, Days to Calving, Domestic Index, Export Index & Northern Index. Top 15% Gestation Length. Top 25% Calving Ease Daughters & Carcase Wt.**

Silk is a smooth bodied bull with outstanding doing ability. Not the performance of some, but he appears to be an ideal bull to use over heifers. Silk had a very large scrotal at a young age. Dam has a great ability to maintain her body condition.

Weight	Fat	EMA	IMF	Fleck	Scrotal

CE,BWT,200WT,600WT(x2),SS

CE	CEDtrs	Gest	BW	200	400	600	MCW	MILK	SS	DTC	CWT	EMA	RIB FAT	RUMP FAT	RBY	IMF	Dom\$	Exp\$	Nth\$
+10.2	+4.2	-2.8	+0.3	+25	+37	+54	+33	+5	+2.9	-5.1	+37	+4.0	-0.3	-0.2	+1.2	+0.4	\$50	\$51	\$62
38%	31%	40%	72%	66%	65%	71%	56%	35%	68%	39%	52%	42%	44%	44%	41%	36%			

Purchaser: \_\_\_\_\_ Price: \$ \_\_\_\_\_

# Got a job to do?



## Call the



- Agricultural and Earthmoving equipment repairs, rebuilds and modifications
- Irrigation installation
- Pump house construction
- Light to heavy general mobile fabrication.

**Andrew Dunbar**

Ph: 0422 198 452

Email: [andrew@ladmobilemaintenance.com](mailto:andrew@ladmobilemaintenance.com)

Follow us on  @LADMMS

# MARELLAN SOUTHERN CROSS (P)

# LOT 27

ID: JOBL065 BORN: 30/06/15 (26 Mths) Roan



SPRYS TRUE BLUE Y033 (P) (ET)  
**MARELLAN POM (P) (Red)**  
 MARELLAN CAMELOT 0078 (P)  
 MARELLAN INDESTRUCTABLE (P)  
**MARELLAN CLEMENTINE 9232 (P) (White)**  
 MARELLAN CLEMENTINE 4295 (P)

**Top 10% Calving Ease Direct. Top 15% Gestation Length. Top 20% Calving Ease Daughters, Birth Wt & Rib Fat. Top 25% Milk, Rump Fat, IMF & Domestic Index.**

A Pom son that will add meat quality and finishing ability. I love the softness of this bull. An ideal bull to use over Euro type cows.

Weight	Fat	EMA	IMF	Fleck	Scrotal

CE,BWT,200WT,600WT(x2),SS

CE	CEDtrs	Gest	BW	200	400	600	MCW	MILK	SS	DTC	CWT	EMA	RIB FAT	RUMP FAT	RBY	IMF	Dom\$	Exp\$	Nth\$
+6.8	+5.1	-2.9	+1.8	+23	+32	+43	+49	+7	+0.6	-1.7	+31	+3.1	+0.1	+0.6	+0.1	+0.6	\$37	\$37	\$45
39%	31%	44%	71%	66%	65%	70%	58%	41%	69%	40%	52%	43%	46%	46%	42%	38%			

Purchaser: \_\_\_\_\_ Price: \$ \_\_\_\_\_

# MARELLAN SNICKERS (P)

# LOT 28

ID: JOBL126 BORN: 29/07/15 (25 Mths) Roan



MARELLAN INDESTRUCTABLE (P)  
**ROYALLA NEXT OF KIN F261 (P) (Roan)**  
 MARELLAN REDWING J6065 (P)  
 INVERARY ROLEX Z100 (P)  
**MARELLAN ADA 9023M (P) (Roan)**  
 MARELLAN ADA I5004 (P)

**Top 10% Birth Wt, Top 15% Calving Ease Direct, Calving Ease Daughters & Rib Fat. Top 20% Rump Fat. Top 25% Milk & IMF**

Another soggy roan. I like his meaty carcass and doing ability. A bull that would suit cows needing more cover or programs that like to fatten at a young age.

Weight	Fat	EMA	IMF	Fleck	Scrotal

CE,BWT,600WT(x2),SS

CE	CEDtrs	Gest	BW	200	400	600	MCW	MILK	SS	DTC	CWT	EMA	RIB FAT	RUMP FAT	RBY	IMF	Dom\$	Exp\$	Nth\$
+5.2	+6.1	-1.4	+1.0	+20	+20	+21	+18	+7	+1.2	-1.6	+23	+3.8	+0.4	+0.8	+0.6	+0.6	\$32	\$36	\$35
44%	36%	42%	72%	65%	65%	70%	57%	42%	67%	39%	51%	42%	44%	44%	41%	36%			

Purchaser: \_\_\_\_\_ Price: \$ \_\_\_\_\_

# MARELLAN SNUG (P)

# LOT 29

ID: JOBL162 (Herd Bull)

BORN: 2/08/15 (25 Mths)

Roan



MARELLAN ROYALLA BLOOD

**YOOROOGA SIRE**

YOOROOGA BRED

MARELLAN ROYALLA BLOOD

**MARELLAN 7701 (P) (Roan)**

YOOROOGA BRED

Snug is a structurally correct bull that displays good length of body. A bull that will produce progeny that are easy to fatten. Dam's line was from the Yoorooga herd, which we consider to be one of the best Shorthorn Herds in NSW.

Weight	Fat	EMA	IMF	Fleck	Scrotal

Purchaser: \_\_\_\_\_ Price: \$ \_\_\_\_\_

# MARELLAN SCRIBE (P)

# LOT 30

ID: JOBL177 (Herd Bull)

BORN: 28/07/15 (25 Mths)

Roan

MARELLAN ROYALLA BLOOD

**YOOROOGA SIRE**

YOOROOGA BRED

MARELLAN ROYALLA BLOOD

**MARELLAN 7703 (P) (Roan)**

YOOROOGA BRED

Scribe is very similar to the previous bull. Long bodied, smooth shouldered bull that would well suited to producing bullocks that can fatten.

Weight	Fat	EMA	IMF	Fleck	Scrotal

Purchaser: \_\_\_\_\_ Price: \$ \_\_\_\_\_

# KIRBY ROBERTS CONTRACTING

*Contract Fencing and much more*

**Kirby Roberts – 0448 368 895**

# MARELLAN SPALDING (P) (ET)

ID: JOBL144

BORN: 30/08/15 (24 Mths)

Roan

# LOT 31



SPRYS PATENT'S ACE G38 (P) (ET)  
**SPRYS JUNCTION (P) (ET) (Roan)**  
 THE GROVE PRIMROSE A742 (P) (ET)

MARELLAN INDESTRUCTABLE (P)  
**ROYALLA IDA 8364L (P) (Red Little White)**  
 ROYALLA IDA 6TH (P) (ET)

**Top 1% Gestation Length & Milk. Top 5% 200Wt, Days to Calving, Domestic Index & Northern Index. Top 10% Scrotal Size, Carcase Wt & Export Index. Top 15% Calving Ease Direct, 600Wt & Rib Fat. Top 20% Birth Wt & Carcase Wt.**

Spalding is a good framed roan with solid performance. Ida 8364 is one of our best cows. His sire Junction, sold for \$35,000.

Weight	Fat	EMA	IMF	Fleck	Scrotal

CE	CEDtrs	Gest	BW	200	400	600	MCW	MILK	SS	DTC	CWT	EMA	RIB FAT	RUMP FAT	RBY	IMF	Dom\$	Exp\$	Nth\$
+5.5	-0.1	-5.6	+1.7	+34	+41	+63	+41	+10	+2.5	-5.7	+42	+5.5	+0.3	+0.3	+1.0	+0.4	\$47	\$46	\$62
45%	37%	51%	65%	66%	67%	69%	56%	42%	69%	42%	55%	50%	53%	52%	48%	44%			

Purchaser: \_\_\_\_\_ Price: \$ \_\_\_\_\_



*"Emerald Downs" isn't all about Cows.*

# MARELLAN TOTAL (P)

# LOT 32

ID: JOBM026

BORN: 11/02/16 (19 Mths)

Red



*Marellan Isobel 7152, granddam of Lot 32.*

EUNGELLA THEODORE'S ASTOR D05 (P)  
**DUNBEACON DAMPIER G121 (P) (Red)**  
 DUNBEACON BLANCHE C101 (P)

SPRYS ISABELLA'S MASTER F293 (P)  
**MARELLAN ISOBEL 3225 (P) (ET) (Red)**  
 MARELLAN ISOBEL 7152 (P)

**Top 15% Scrotal Size. Top 20% EMA & Rib Fat. Top 25% Calving Ease Daughters & 200 Wt.**

Total. This bull does most things very well. Shape, doing ability and performance. Dam is a donor cow, she is also a full sister to Queensland Red.

Weight	Fat	EMA	IMF	Fleck	Scrotal

CE	CEDtrs	Gest	BW	200	400	600	MCW	MILK	SS	DTC	CWT	EMA	RIB FAT	RUMP FAT	RBY	IMF	Dom\$	Exp\$	Nth\$
-0.1	+3.3	-1.3	+4.3	+30	+38	+54	+45	+4	+2.1	-0.7	+35	+5.4	+0.2	+0.2	+0.8	+0.5	\$29	\$33	\$41
39%	29%	35%	61%	62%	65%	61%	50%	32%	68%	37%	48%	41%	43%	43%	39%	34%			

Purchaser: \_\_\_\_\_ Price: \$ \_\_\_\_\_



*Marellan Queensland Red, first sons sell in 2018.*

# MARELLAN TULLAMORE TERMITE (H)

# LOT 33

ID: JOBM089

BORN: 29/02/16 (18 Mths)

Red Little White



LACHLAN MASTER CARD (P) (ET)  
**SPRYS ISABELLA'S MASTER F293 (P) (Red Little White)**  
 SCHULLER ISABELLA C43 (P)  
 GUMBLE WARATAH 2ND (P)  
**COONARDOO F617 (P) (Red)**  
 COONARDOO X166 (P)

**Top 10% Retail Yeild. Top 15% milk. Top 20% Scrotal Size, Days to Calving & EMA.**

Horned. A mid-maturity bull with a really profitable carcass shape. I like his thickness and sound balanced outlook. He has the same sire and Queenslander and Queensland Red.

Weight	Fat	EMA	IMF	Fleck	Scrotal

CE	CEDtrs	Gest	BW	200	400	600	MCW	MILK	SS	DTC	CWT	EMA	RIB FAT	RUMP FAT	RBY	IMF	Dom\$	Exp\$	Nth\$
+0.6	+1.8	-1.3	+4.3	+29	+36	+51	+40	+8	+2.6	-2.4	+33	+5.6	-1.0	-1.9	+1.9	+0.5	\$30	\$38	\$38
39%	31%	30%	58%	60%	64%	58%	50%	40%	66%	35%	47%	41%	43%	43%	39%	35%			

Purchaser: \_\_\_\_\_ Price: \$ \_\_\_\_\_

# MARELLAN TYPO (P) (AI)

# LOT 34

ID: JOBM045

BORN: 28/01/16 (19 Mths)

Red



*Sprys Junction (P),  
sire of Lot 34 and other sale lots*

SPRYS PATENT'S ACE G38 (P) (ET)  
**SPRYS JUNCTION (P) (ET) (Roan)**  
 THE GROVE PRIMROSE A742 (P) (ET)

**MARELLAN WINEMA 9913 (P) (Red)**

**Top 5% Gestation Length, & Birth Wt. Top 10% Rump Fat. Top 15% Days to Calving & Rib Fat.**

A moderate framed Junction son. Typo has a good meaty carcass. Ideal for producers wanting to turn off progeny at a younger age.

Weight	Fat	EMA	IMF	Fleck	Scrotal

CE	CEDtrs	Gest	BW	200	400	600	MCW	MILK	SS	DTC	CWT	EMA	RIB FAT	RUMP FAT	RBY	IMF	Dom\$	Exp\$	Nth\$
+2.6	-1.2	-3.5	-0.1	+19	+23	+34	+11	+4	+1.3	-2.8	+28	+2.8	+0.4	+1.4	+0.5	+0.5	\$30	\$32	\$39
34%	26%	62%	56%	58%	64%	58%	47%	33%	66%	36%	45%	40%	42%	42%	38%	34%			

Purchaser: \_\_\_\_\_ Price: \$ \_\_\_\_\_

# MARELLAN TAKE TWO (P)

ID: JOBM020 BORN: 17/01/16 (20 Mths) Red

# LOT 35



Sire of Lot 35 & 32

EUNGELLA THEODORE'S ASTOR D05 (P)  
**DUNBEACON DAMPIER G121 (P) (Red)**  
 DUNBEACON BLANCHE C101 (P)

MARELLAN NICODEMUS (P)  
**MARELLAN SUSAN 3201 (P) (Red)**  
 MARELLAN SUSAN 7287K (P)

**Top 20% Rib Fat. Top 25% Rump Fat.**

Take Two is a long bodied red. He is a good performance bull with doing ability.

Weight	Fat	EMA	IMF	Fleck	Scrotal

CE	CEDtrs	Gest	BW	200	400	600	MCW	MILK	SS	DTC	CWT	EMA	RIB FAT	RUMP FAT	RBV	IMF	Dom\$	Exp\$	Nth\$
-1.6	+1.5	-1.0	+3.5	+22	+29	+36	+32	+2	+1.3	+0.3	+26	+4.0	+0.5	+1.2	+0.2	+0.6	\$20	\$23	\$25
38%	28%	37%	60%	60%	65%	61%	50%	31%	68%	36%	48%	40%	43%	43%	39%	34%			

Purchaser: \_\_\_\_\_ Price: \$ \_\_\_\_\_

# MARELLAN TOWN CENTRE (P) (AI)

ID: JOBM001 BORN: 26/01/16 (19 Mths) Roan

# LOT 36



SPRYS PATENT'S ACE G38 (P) (ET)  
**SPRYS JUNCTION (P) (ET) (Roan)**  
 THE GROVE PRIMROSE A742 (P) (ET)  
 MARELLAN HERCULES 4090 (P) (ET)  
**ROYALLA IDA J6215 (P) (Red)**  
 ROYALLA IDA 3230 (P)

**Top 1% Birth Wt & Days to Calving. Top 5% Calving Ease Direct, Gestation Length, Scrotal Size & Domestic Index, Export Index & Northern Index. Top 25% Carcase Wt & IMF.**

A class act late in the sale. Town Centre has length of body and a nice muscle shape. I like the athletic balance on this bull. Ida 6215 is a ultra feminine cow, she had just weaned her 10th calf.

Weight	Fat	EMA	IMF	Fleck	Scrotal

CE	CEDtrs	Gest	BW	200	400	600	MCW	MILK	SS	DTC	CWT	EMA	RIB FAT	RUMP FAT	RBV	IMF	Dom\$	Exp\$	Nth\$
+8.6	+2.3	-4.3	-0.2	+26	+35	+52	+30	+5	+2.4	-6.4	+37	+3.1	-0.3	+0.1	+1.0	+0.6	\$50	\$52	\$61
41%	33%	65%	72%	67%	69%	65%	57%	42%	69%	42%	51%	48%	51%	51%	46%	41%			

Purchaser: \_\_\_\_\_ Price: \$ \_\_\_\_\_

# MARELLAN TERRY TOWELLING (P) (ET)

# LOT 37

ID: JOBM015

BORN: 6/03/16 (18 Mths)

Roan



SPRYS PATENT'S ACE G38 (P) (ET)  
**SPRYS JUNCTION (P) (ET) (Roan)**  
 THE GROVE PRIMROSE A742 (P) (ET)

## MARELLAN PIESEL D003 (P) (Red)

**Top 10% Gestation Length & Birth Wt. Top 15% Days to Calving. & Northern Index. Top 25% Carcase Wt & Domestic Index.**

A favourite since a young age. Terry Towelling has good performance traits, muscle pattern, as well as doing ability. Dam, Pieisel D003 is a top cow, unfortunately she doesn't give many eggs.

Weight	Fat	EMA	IMF	Fleck	Scrotal

CE	CEDtrs	Gest	BW	200	400	600	MCW	MILK	SS	DTC	CWT	EMA	RIB FAT	RUMP FAT	RBY	IMF	Dom\$	Exp\$	Nth\$
+3.1	-0.5	-3.4	+1.3	+27	+38	+56	+41	+5	+1.4	-2.8	+37	+3.4	-0.1	+0.2	+0.9	+0.3	\$36	\$35	\$50
34%	26%	38%	52%	52%	52%	52%	47%	36%	49%	30%	41%	38%	41%	40%	37%	33%			

Purchaser: \_\_\_\_\_ Price: \$ \_\_\_\_\_

# MARELLAN TUFF STICKER M054 (H)

# LOT 38

ID: JOBM054

BORN: 8/04/16 (17 Mths)

Roan



MARELLAN INDESTRUCTABLE (P)  
**ROYALLA OSTENTATIOUS G404 (P) (Roan)**  
 MARELLAN REDWING J6065 (P)  
 BYLAND MISSION 6RD112 (IMP USA) (P)  
**MARELLAN MAGNOLIA 7016K (P) (Red)**  
 MARELLAN MAGNOLIA 2213 (P)

**Top 10% Calving Ease Daughters. Top 15% Calving Ease Direct. Top 20% Scrotal Size.**

A good soggy roan. A good option for producers wanting to increase coverage and fatten at a young age. The youngest bull in the sale.

Weight	Fat	EMA	IMF	Fleck	Scrotal

CE	CEDtrs	Gest	BW	200	400	600	MCW	MILK	SS	DTC	CWT	EMA	RIB FAT	RUMP FAT	RBY	IMF	Dom\$	Exp\$	Nth\$
+5.9	+5.4	-0.9	+2.6	+26	+27	+38	+34	+4	+1.9	-1.9	+29	+3.5	-0.3	-0.6	+0.8	+0.4	\$32	\$36	\$40
42%	34%	48%	63%	61%	64%	60%	51%	42%	64%	39%	48%	45%	47%	47%	34%	38%			

Purchaser: \_\_\_\_\_ Price: \$ \_\_\_\_\_

# MARELLAN TERRIFIC (P) (AI)

ID: JOBM004 BORN: 27/01/16 (19 Mths) Roan

# LOT 39



Terrific as a calf.

SPRYS PATENT'S ACE G38 (P) (ET)  
**SPRYS JUNCTION (P) (ET) (Roan)**  
 THE GROVE PRIMROSE A742 (P) (ET)  
 LACHLAN C335 (P) (ET)  
**MARELLAN CAMELOT 0078 (P) (Red)**  
 MARELLAN CAMELOT I5214 (P)

**Top 5% Gestation Length. Top 10% Export Index & Northern Index. Top 15% Calving Ease Direct. Top 20% Birth Wt, 600 Wt, milk, Carcase Wt & Domestic Index. Top 25% Days to Calving.**

Terrific always took my eye as a calf. He is a young sire that displays muscle with outlook. Camelot 0078 is also the mother of Pom, lot 22 & 24.

Weight	Fat	EMA	IMF	Fleck	Scrotal

CE	CEDtrs	Gest	BW	200	400	600	MCW	MILK	SS	DTC	CWT	EMA	RIB FAT	RUMP FAT	RBY	IMF	Dom\$	Exp\$	Nth\$
+5.4	+0.5	-4.4	+1.8	+29	+39	+60	+36	+7	+1.3	-1.9	+38	+4.5	-0.2	-0.3	+1.0	+0.5	\$39	\$44	\$56
41%	33%	65%	72%	66%	68%	65%	57%	40%	70%	42%	50%	46%	48%	48%	44%	40%			

Purchaser: \_\_\_\_\_ Price: \$ \_\_\_\_\_

# MARELLAN T-BONE (P) (AI)

ID: JOBM009 BORN: 2/02/16 (19 Mths) Roan

# LOT 40



Marellan Ella 7329, dam of Lot 40.

SPRYS PATENT'S ACE G38 (P) (ET)  
**SPRYS JUNCTION (P) (ET) (Roan)**  
 THE GROVE PRIMROSE A742 (P) (ET)  
 MARELLAN HERCULES 4090 (P) (ET)  
**MARELLAN ELLA 7329K (P) (Red)**  
 MARELLAN ELLA (P)

**Top 15% Scrotal Size, Days to Calving & Northern Index. Top 20% 200 Wt, 600 Wt & Carcase Wt. Top 25% Gestation Length & Domestic Index.**

A nice roan meaty bull. Good performance and length. Ella 7329 is a good old cow, she has just weaned her 9th calf. Our original Ella came from 'Westquarter' at Charleville. Please note, T-Bone carries more hair than most.

Weight	Fat	EMA	IMF	Fleck	Scrotal

CE	CEDtrs	Gest	BW	200	400	600	MCW	MILK	SS	DTC	CWT	EMA	RIB FAT	RUMP FAT	RBY	IMF	Dom\$	Exp\$	Nth\$
+3.1	-4.2	-2.2	+2.3	+31	+41	+61	+39	+5	+2.0	-2.8	+38	+4.1	-0.2	-0.1	+1.0	+0.5	\$36	\$38	\$50
41%	33%	64%	71%	66%	68%	64%	56%	41%	69%	41%	50%	46%	47%	47%	43%	39%			

Purchaser: \_\_\_\_\_ Price: \$ \_\_\_\_\_

# MARELLAN TUMBLE M066 (P)

ID: JOBM066 BORN: 28/02/16 (18 Mths) Roan

# LOT 41



*Sprys Isabella's Master (P), sire of Lots 33 & 41.*

LACHLAN MASTER CARD (P) (ET)  
**SPRYS ISABELLA'S MASTER F293 (P) (Red Little White)**  
 SCHULLER ISABELLA C43 (P)

GUMBLE ANDREDS (P)  
**COONARDOO H738 (P) (Roan)**  
 COONARDOO D458 (P)

**Top 5% Scrotal Size. Top 10% Retail Yeild. Top 20% Days to Calving. Top 25% EMA.**

An earlier maturity roan. I like his soft muscle pattern and doing ability. Ideal for producer wanting to sell progeny at young ages. Sired by the same bull and Queensland Red and Queenslander.

Weight	Fat	EMA	IMF	Fleck	Scrotal

CE	CEDtrs	Gest	BW	200	400	600	MCW	MILK	SS	DTC	CWT	EMA	RIB FAT	RUMP FAT	RBY	IMF	Dom\$	Exp\$	Nth\$
+0.7	+1.5	-1.6	+4.0	+29	+35	+54	+45	+6	+2.4	-2.6	+35	+5.1	-1.3	-2.4	+1.9	+0.5	\$28	\$37	\$39
38%	30%	29%	57%	60%	65%	60%	51%	39%	66%	34%	47%	41%	42%	43%	39%	35%			

Purchaser: \_\_\_\_\_ Price: \$ \_\_\_\_\_

## Shorthorn Plus+ Bulls



Marellan Strzelecki (H) (¾ Shorthorn, ¼ Brahman).  
 One of a few high quality Shorthorn Plus+ Brahman bulls for private sale.

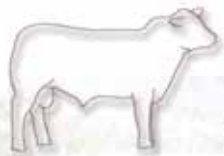


# SELECTION PRESSURE

*Ticks, Heat & Buffalo Fly*

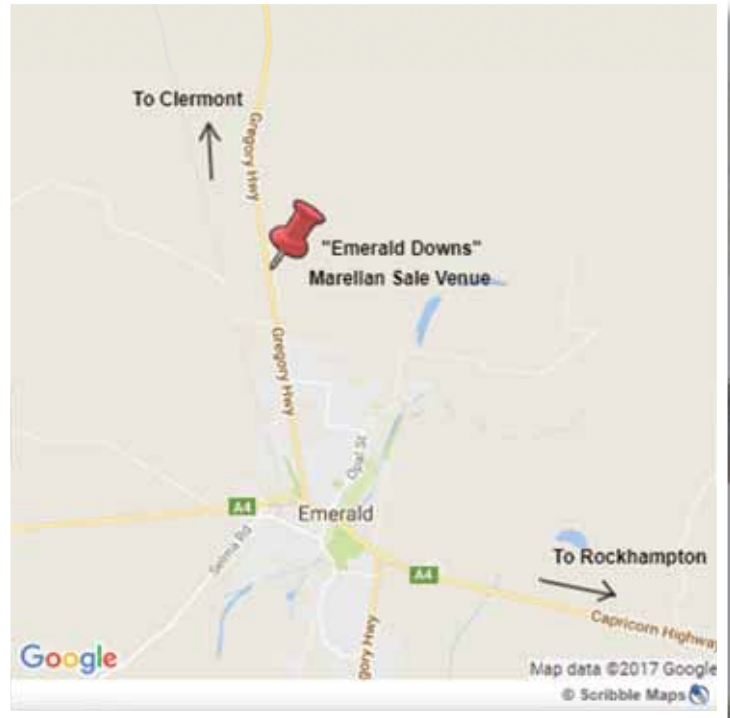


LINCOLN & LISA JOB 0404 083 438  
EMERALD QUEENSLAND  
lincolnandlisa@marellan.com.au  
www.marellan.com.au



**marellan**  
**shorthorns**

Any Age. Any Market. Every Tastebud!



*Background image:  
Shorthorn X Droughtmaster weaner heifers,  
"Star Downs" Alpha. Appleton Cattle Co.*



**LINCOLN & LISA JOB 0404 083 438**  
**EMERALD QUEENSLAND**  
lincolnandlisa@marellan.com.au  
www.marellan.com.au

