

In the North. For the North.



LOT 16
MARELLAN WIDE LOAD

Marellan Shorthorns

"Bred for Bos Indicus Cows" Bull Sale

Monday 28th Sept 2020

ONLINE & ON PROPERTY "Emerald Downs" Emerald

Dear Beef Producers,

We welcome you to our **"Bred for Bos Indicus Cows"** On-Property Bull Sale at "Emerald Downs", just north of Emerald on the Gregory Highway. The sale commences at 12 MIDDAY. Inspection is from 8am on Sale Day, or any other time by appointment.

It has been very pleasing to receive so many good reports of the progeny of our bulls over Bos Indicus Cows. It's great to see that your Bos Indicus Cows and our Shorthorn bulls are forming a profitable and potent combination. We continue to strive for **Industry Leading Selection Pressure**, to instil in our herd more genetic gain and northern industry relevance. Increased Global demand for beef, growth in Organic and grass-fed labels, and a continued focus on producing a high-quality product presents tremendous opportunities for our industry. Opportunities that, in our opinion, could be grasped by combining Marellan Shorthorn Bulls with your Bos Indicus cows.

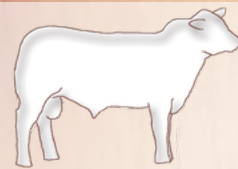
Please Note that this year's sale is both on farm and online, through Auctions Plus. Videos of the bulls will be available around mid-September, via www.marellan.com.au or Marellan Shorthorns Facebook or Auctions Plus. If you are intending on using Auctions Plus on sale day, please ensure that you are registered to do so. The sale will also be live streamed via the Marellan Shorthorns Facebook page.

About the Bulls: On offer will be 40 Shorthorn Bulls. All these bulls have been blooded and have been fully vaccinated with 3-day, Vibrio, Pestiguard and 7 in 1. The bulls have been **Morphology Semen Tested** and up to date weighs and scan will be available before the sale. We are very pleased with this year's bulls. These bulls represent the very best in Shorthorn genetics, which have been bred for generations to prosper in the Queensland environment. Our Bulls are 'In the North, for the North'. **PLEASE NOTE:** Marellan Shorthorn bulls are grass-fed paddock bulls. We think that this policy is in the best **long-term** interests of both our business and yours. This inevitably means that the bulls are not as visually impressive (lighter weights and lower scans) to the eye, as you may see at other sales. We ask both returning clients and new clients to **lower your sale day expectations but increase your long-term expectations** of the contribution that these Marellan Shorthorn bulls can make to your herd.

We invite you to come along on Monday 28th September and Judge for Yourself.

Yours sincerely,

Lincoln & Lisa Job



marellan
shorthorns

Bred for Bos Indicus Cows!



Marellan Shorthorns

"Bred for Bos Indicus Cows" Bull Sale

Monday 28th Sept 2020 "Emerald Downs" Emerald
ONLINE & ON PROPERTY

Monday 28th September 2020

12 noon

ONLINE & ON PROPERTY

"Emerald Downs" Emerald

Inspection from 8am on sale day

40 Shorthorn Bulls

(& 1 Shorthorn X Belmont Red Bull)

Selling Agents:



Outside Agents Rebate:

A 5% rebate will be offered to outside agents who;

1. Introduce their clients more than 24 hours before the sale (to vendors or selling agents)
2. Attend the sale with them (or purchase on their behalf) and settle within 7 days.
3. Agents may ONLY introduce clients under the specific instruction of their clients.
4. Sale day buyers registration forms must be consistent with introductions.

LINCOLN & LISA JOB

(M) 0404 083 438

www.marellan.com.au | lincolnandlisa@marellan.com.au

If you are unable to reach Lincoln on sale day or before,
please feel free to call Lisa's mobile on 0411 311 323



marellan
shorthorns

Bred for Bos Indicus Cows!

Sale Information

Inspection: Inspection will be from 8am on sale day or any other time by appointment.

On Property & Online: The sale will be On-Property at “Emerald Downs” under Covid-Safe protocol. The Sale will also be on the AuctionPlus selling platform and Streamed live on the Marellan Shorthorns Facebook page. Video’s of the Bulls will be online by 7-10 days prior to the sale.

Accommodation: Emerald has numerous accommodation options.

Airport: “Emerald Downs” is situated only 10km from the Emerald Airport. Please call Lincoln (0404 08 34 38) or Lisa (0411 311 323) if you would like us to arrange for you to be picked up from the airport.

Breeding Soundness: All bulls will be Semen Morphology tested and examined for reproductive and structural soundness by Dr Ced Wise, Adam Wise and Rocky Repro.

Supplementary Sheet: Supplementary Sheets will be available in the week leading up to the Sale. Bulls will be weighed, scanned for EMA, IMF, Marble Fleck and Fat cover. Scrotal measurements have been done by Dr Ced Wise & Adam Wise with the ‘reliable’ tension measurer, in accordance with the Australian Cattle Veterinarians.

Delivery: We will endeavour to help co-ordinate efficient delivery of the bulls where required. Trucks are welcome on sale day. All bulls sold outside of the ticks will be delivered and presented clean to the clearance dip at the vendor’s expense.

Health: All bulls have been vaccinated with 7 in 1, Pestiguard, 3-day and Vibrio. All bulls have been blooded with 3-germ. The Central Highlands is ticky country; consequently, all bulls have been exposed to ticks on numerous occasions and will need to be cleared if they are sold to a tick free area. Bulls will not be within a withholding period on sale day and are therefore free to go to Organic herds.

Delayed Payment: Delayed payment may be available to some producers. Please speak to Lincoln prior to sale day.

Mobile Phones: “Emerald Downs” has very good mobile phone coverage.

Directions: “Emerald Downs” is located just north of Emerald on the Gregory Highway. Please see inside the back cover for a map.

Sale Bulls: Sale bulls have been prepared for their working lives, under our strict Selection Pressure polices. They are genuine grass fed, paddock reared bulls that have undergone intense selection pressure. Consequently, they will not have the finish that you may see at other sales. We are determined to ensure that our bulls can survive and thrive in Central, North and Western Queensland, rather than ‘look good’ on sale day. Parent Verification on some bulls is pending. Please speak to Lincoln if you require any clarification.

Semen Rights: We have collected semen from a limited number of sale bulls. **We retain 50% Semen rights on ALL LOTS.** It is most likely that this will be absolutely irrelevant for virtually all buyers but please speak to Lincoln if you require any clarification.

GST: 10% GST will be added to the knock down price.

IGS Breed Average EPD’s

	CE	BW	WW	YW	Milk	MCE	MWWT	Stay	DOC	CWT	REA	FAT	MARB	YG	API\$
EPD	+7.9	+3.3	+53.3	+82.9	+27.2	+5.7	+53.8	+12.9	+10.9	-5.5	+0.10	-0.088	-0.01	-0.31	\$106.83



Jake Passfield 0488 588 044

Tony Hoch 0448 831 553

Clermont Office 0749 831 555

SPECIALISING IN MARKETING

- Livestock Sales
- Rural Property Sales
- Residential Sales
- Clearing Sales &
- Property Management

H&W

Livestock & Property

www.hochandwilkinson.com



AuctionsPlus

How to Register and Bid on AuctionsPlus

- 1 Go to www.auctionsplus.com.au to register at least 48 hours before the sale.
- 2 Select "Sign Up" in the top right hand corner.
- 3 Fill out your name, mobile number, email address and create a password.
- 4 Go to your emails and confirm the account.
- 5 Return to AuctionsPlus and log in.
- 6 Select "Dashboard" and then select "Request Approval to Buy".
- 7 Fill in buyer details and once completed go back to Dashboard.
- 8 Complete buyer induction module (approx. 30 minutes).
- 9 AuctionsPlus will email you to let you know that your account has been approved.
- 10 Log in on sale day and connect to auction.
- 11 Bid using the two-step process – unlock the bid button and bid at that price.
- 12 If you are successful, the selling agent will contact you post sale to organise delivery and payment.

For more information please contact us on:

Phone: (02) 9262 4222

Email: info@auctionsplus.com.au



AuctionsPlus

Buy and Sell stock nationally

**Bid online on
AuctionsPlus
and watch online
on the
Marellan Shorthorns
Facebook Page.**

MARELLAN VIABLE (P)

LOT 1

ID: JOBP112

BORN: 10/7/18 (26 MTHS)

ROAN



THE GROVE OSCAR A748 (P)

Sire: **WEEBOLLABOLLA HIGGINS H82 (P)**
WEEBOLLABOLLA JILLAROO Z49 (P)

GOBOTHERY SIRE

Dam: **GOBOTHERY 803 (P)**
GOBOTHERY COW

Top 20% Yearling Weight & Yield Grade, Top 25% Weaning Weight.

Viable is a top grade, soft roan to kickoff our 2020 bull sale. A bull with a real combination of positive attributes, smooth soft carcase and lovely structure. A bull that will breed top progeny, both male and female, over all types of Bos Indicus females.

Weight	Fat	EMA	IMF	Fleck	Scrotal	Morph.	Mot.
						92%	90%

	CE	BW	WW	YW	Milk	MCE	MWWT	Stay	DOC	CWT	REA	FAT	MARB	YG	API\$
EPD	+6.7	+3.5	+59.6	+94.6	+20.5	+6.2	+50.3	+12.2	-	-9.6	+0.12	-0.093	+0.00	-0.35	\$107.30
RANK %	70	55	25	20	95	40	75	65	-	70	40	70	40	20	50
Acc.	5%	6%	6%	6%	4%	4%	5%	3%	-	6%	5%	4%	5%	4%	

Purchaser: Price: \$

MARELLAN VIVALDI (P)

LOT 2

ID: JOBP126

BORN: 12/7/18 (26 MTHS)

ROAN



WEEBOLLABOLLA FINLAY F120 (S)

Sire: **WEEBOLLABOLLA J95 (H)**
WEEBOLLABOLLA BILLABONG B109

GOBOTHERY SIRE

Dam: **GOBOTHERY 805 (P) ROAN**
GOBOTHERY COW

Top 20% Weaning Weight & Yearling Weight.
Made in the same mould as Lot 1. Bulls with length and doing ability like Vivaldi breed very good bullocks. A sound made roan with a nice profile and pattern.

Weight	Fat	EMA	IMF	Fleck	Scrotal	Morph.	Mot.
						86%	80%

	CE	BW	WW	YW	Milk	MCE	MWWT	Stay	DOC	CWT	REA	FAT	MARB	YG	API\$
EPD	+3.9	+5.8	+58.3	+86.9	+24.8	+4.1	+54.0	+11.6	-	-22.6	-0.18	-0.102	-0.06	-0.33	\$95.16
RANK %	100	95	20	20	70	80	40	70	-	100	100	100	75	35	90
Acc.	27%	30%	30%	30%	4%	10%	13%	19%	-	35%	34%	29%	32%	28%	

Purchaser: Price: \$

MARELLAN VAUCLUSE (P)

LOT 3

ID: JOBP129

BORN: 24/7/18 (26 MTHS)

ROAN



ROYALLA IMITATOR (P)

Sire: WARRABERRY ROCKY BALBOA L12 (P)

WARRABERRY FREDA J117 (P)

WARRABERRY FELDON (P)

Dam: WARRABERRY TRITA J28 (P)

WARRABERRY MEME E117 (P)

Sire is: Top 1% Calving Ease & Maternal Calving Ease, Top 2% Birth Weight, Top 10% Docility & API, Top 15% Stayability, Top 25% Fat.

Vaucluse is a super, easy doing bull with a soft muscle pattern, a profitable combination for breeding both bullocks and replacement females. A real Shorthorn Roan - Marbled on the outside, Marbled on the inside. PLEASE NOTE, Sire's EPD's.

Weight	Fat	EMA	IMF	Fleck	Scrotal	Morph.	Mot.
						94%	90%

	CE	BW	WW	YW	Milk	MCE	MWWT	Stay	DOC	CWT	REA	FAT	MARB	YG	API\$
EPD	+17.1	-0.8	+39.9	+60.4	+27.7	+11.5	+47.7	+15.8	+14.3	+17.2	-0.14	-0.084	-0.11	-0.27	\$120.82
RANK %	1	2	100	100	50	1	90	15	10	95	100	25	95	90	10
Acc.	49%	58%	41%	41%	11%	23%	21%	24%	6%	41%	40%	33%	37%	33%	

Purchaser: Price: \$

MARELLAN VICTORIOUS (P)

LOT 4

ID: JOBP047

BORN: 26/6/18 (27 MTHS)

RED & WHITE



ROYALLA ORVILLE G231 (P)

Sire: NUNYARA SUPERMAN L191 (P)

NUNYARA CARNATION J071 (P)

MARELLAN NICODEMUS (P)

Dam: WARRABERRY TRITA M231 (P)

WARRABERRY MEME G45 (P)

Top 10% Calving Ease, Birth Weight & Fat, Top 15% Maternal Calving Ease.

Victorious is a class act, super impressive bull. Incredible carcase shape for a British bred type of bull. He has a genuine butterfly loin. I get excited thinking about what his bullocks will be like. Out of a really functional Nicodemus daughter. We will use Victorious by AI ad ET in our herd. Don't be mislead by the photo, Victorious has a very good scrotal.

Weight	Fat	EMA	IMF	Fleck	Scrotal	Morph.	Mot.
						94%	85%

	CE	BW	WW	YW	Milk	MCE	MWWT	Stay	DOC	CWT	REA	FAT	MARB	YG	API\$
EPD	+12.0	+1.1	+44.6	+66.8	+28.8	+7.9	+51.1	+11.2	-	-15.7	-0.09	-0.078	-0.09	-0.27	\$103.86
RANK %	10	10	90	95	35	15	70	75	-	95	95	10	85	90	65
Acc.	20%	29%	20%	20%	9%	12%	13%	10%	-	14%	13%	9%	11%	11%	

Purchaser: Price: \$

Industry Leading Selection Pressure – to Increase your bottom line \$

Our breeding philosophy is pretty simple, start with the best genetics possible (& keep adding to that group), chuck them all in at the deep end and see who learns to swim...quickly. This approach is ultimately about your herd as much as ours. Because if our bulls don't excel in your herd, we don't have a business. Feedback is always welcome, both positive and negative. As this feedback helps to refine our breeding program.



'Grass Reared – Grass Prepared'

Marellan Shorthorns exists for the sustainability and profitability of our herd and our client's herds. Our 2020 sale bulls are genuine grass-fed paddock reared bulls. **Grass Reared – Grass Prepared**; it proves our bulls can handle the environment. **Grass Reared – Grass Prepared**; It ensures the bulls are not carrying excess weight, they don't need to be let down; our bulls are for breeding not for looking prime on sale day. We believe that not pushing a bull's skeletal structure to the maximum is best for longevity. **Grass Reared – Grass Prepared**; it's part of our wider selection pressure.

Paternal (Bull) Selection Pressure

Our Paternal (Bull) Selection pressure doesn't end with **Grass Reared – Grass Prepared**; Once weaned we deliberately ensure that our bulls don't get a silver spoon put in their mouths. We ensure that they are only grazed on low quality feed and given minimum animal health treatments. This most definitely affects their growth, development and heavy they are on sale day, but this selection pressure means that only those with the best survivability prosper, making the culling process quite easy. The bulls are then finished for sale day on grazing crop, in 2020 this was for only a minimal time period. **Please don't expect to see fat, prime, feedlot finished bulls on sale day.** The feedlot is the finishing system of many, **but grass is production system of virtually all.** Our bulls are all about production, so our Paternal Selection Pressure reflects this. But don't worry, their progeny will be great feedlot performers, a group of mixed sex feedlot cattle (mainly cull cows) averaged 3.41KG per day. Our bulls are light but have been tested and verified with extreme selection pressure, for the long-term benefit of your herd and ours. If you can source British Bred Bulls of high quality anywhere in the country that have had that much selection pressure; we suggest you do!





Marellan Shorthorn Cows at “Nunya” Yamala

Shorthorns in the Ticks

We are determined to produce a tropically adapted Shorthorn herd in the ticks. We want our herd to survive and thrive in an environment that is similar to our client's herds. We use environmental selection pressure to make our cattle even more industry relevant. There are very few British Bred Bull breeding herds in the country that are in the ticks. Breeding a tropically adapted Shorthorn herd is not easy, but that's our aim. To help achieve this, environmental selection pressure is at the heart of our breeding philosophy. To have Shorthorns in the ticks we apply **Unique Selection Pressure** within our herd. We have and are monitoring the tick levels on different individuals and lines within our herd to identify and then propagate those that have the lowest tick burden and highest industry relevance for the north. Our aim isn't to have Shorthorn cows that need constant intervention, but to have a herd of Shorthorn Females that get no more care and attention than the majority of Bos Indicus herds. As stud breeders we believe that our selection pressure must be harder than our clients, to help ensure that our bulls provide genetic gain for their new owners.

Maternal Selection Pressure – Focussed on Fertility

Selection Pressure is at the absolute core of our breeding philosophy. When immense selection pressure is combined with the pursuit of elite genetics, it becomes the mechanism by which the value of a herd is ultimately determined. It is only those that remain after a heavy selection pressure that we want to breed from; the cream rises to the top. But our selection pressure doesn't stop with ticks, fly and heat. Fertility is at the core of our selection pressure. Heifers are only joined for 2 cycles and we demand that our cows calve each year, and rebreed whilst lactating, ensure a calving interval that is close to or less than 365 days. Females that don't meet our high standards are culled, to ensure that inferior and uneconomical traits are not spread into our client's herds. We are finding that our ideal females are ones with constitution and rumen capacity, that maintain their body condition throughout lactation and along the roller-coaster that is Central Queensland seasons. Fertility is also our focus with our bulls. Our bulls are semen motility & morphology tested. All scrotal measurements are undertaken with the 'Reliable' tension measurer in accordance with the Australian Cattle Vets.



Location: 9 Turruma Road, Clermont QLD
Phone: 07 4983 1688 Fax: 07 4983 1779
Website: www.breckoncattleequipment.com.au



Leading Manufacturers of

~ Manual, Hydraulic and Pneumatic Crushes & Branding Cradles ~

~ Feeding Equipment ~ Roller Mills ~



**Breckon Cattle Equipment
"BCE" proudly owned and
manufactured by Gregory
Fabrications in Clermont QLD.
Contact them for all you cattle
handling equipment.**



MARELLAN VELOCITY (P)

LOT 5

ID: JOBP130

BORN: 30/6/18 (27 MTHS)

ROAN



SPRYS DOUBLE BARREL (P)
Sire: KAMILAROI FUSION (P)
KAMILAROI ELLIE (P)

ROYALLA NEXT OF KIN (P)
Dam: WARRABERRY PRINCESS MARGIE K61 (P)
WARRABERRY PRINCESS MARGIE F56 (P)

Top 10% Weaning Weight, Top 15% Yearling Weight,
Top 20% Maternal Weaning Weight & Top 25% Fat.
It's easy to breed carcase shape. It's easy to breed
carcase coverage. Putting those two traits together
where its at. That's Velocity! A cracking bull for Bos
Indicus cows.

Weight	Fat	EMA	IMF	Fleck	Scrotal	Morph.	Mot.
						80%	80%

	CE	BW	WW	YW	Milk	MCE	MWWT	Stay	DOC	CWT	REA	FAT	MARB	YG	API\$
EPD	+5.6	+5.0	+63.8	+96.5	+27.4	+3.8	+59.3	+14.3	-	-4.9	+0.13	-0.084	-0.04	-0.31	\$105.81
RANK %	85	85	10	15	50	85	20	35	-	45	40	25	65	60	55
Acc.	17%	28%	16%	16%	8%	12%	11%	9%	-	15%	14%	10%	12%	11%	

Purchaser: Price: \$

MARELLAN VERY COOL (P)

LOT 6

ID: JOBP139

BORN: 15/7/18 (26 MTHS)

ROAN



THE GROVE OSCAR A748 (P)
Sire: WEEBOLLABOLLA HIGGINS H82 (P)
WEEBOLLABOLLA JILLAROO Z49 (P)

GOBOTHERY SIRE
Dam: GOBOTHERY 811 (P)
GOBOTHERY COW

Top 20% Yearling Weight & Yield Grade, Top 25%
Weaning Weight.
Very Cool is the definition of Soggy; the ability to look
good and perform in the paddock no matter what the
prevailing seasonal conditions. A bull that combines
stature, shape and quick finishing ability. He will
breed really high class bullocks that finish within sort
windows of opportunity and productive females. A real
Shorthorn Roan - Marbled on the outside, Marbled on
the inside.

Tested Homozygous Polled (PP)

Weight	Fat	EMA	IMF	Fleck	Scrotal	Morph.	Mot.
						93%	75%

	CE	BW	WW	YW	Milk	MCE	MWWT	Stay	DOC	CWT	REA	FAT	MARB	YG	API\$
EPD	+6.7	+3.5	+59.6	+94.6	+20.5	+6.2	+50.3	+12.2	-	-9.6	+0.12	-0.093	+0.00	-0.35	\$107.30
RANK %	70	55	25	20	95	40	75	65	-	70	40	70	40	20	50
Acc.	5%	6%	6%	6%	4%	4%	5%	3%	-	6%	5%	4%	5%	4%	

Purchaser: Price: \$

MARELLAN VERY IMPRESSIVE (P)

LOT 7

ID: JOBP128

BORN: 2/6/18 (27 MTHS)

ROAN



ROYALLA ORVILLE G231 (P)

Sire: NUNYARA SUPERMAN L191 (P)

NUNYARA CARNATION J071 (P)

MARELLAN NICODEMUS (P)

Dam: WARRABERRY PRINCESS MARGIE M198 (P)

ROYALLA PRINCESS MARGIE 7378

Top 10% Calving Ease, Top 15% Birth Weight, Top 15% Maternal Calving Ease & Top 10% Fat.

Another top Superman son out of a Nicodemus cow. I bull I have a lot of time for, class, carcase and finishing ability. Please note, Very Impressive does not handle humidity like most of our bulls.

Tested Homozygous Polled (PP)

Weight	Fat	EMA	IMF	Fleck	Scrotal	Morph.	Mot.
						93%	85%

	CE	BW	WW	YW	Milk	MCE	MWWT	Stay	DOC	CWT	REA	FAT	MARB	YG	API\$
EPD	+12.4	+1.4	+47.9	+72.9	+28.7	+8.0	+52.7	+12.5	-	-13.0	-0.10	-0.080	-0.08	-0.26	\$108.62
RANK %	10	15	80	80	40	15	60	60	-	85	100	15	85	95	45
Acc.	18%	27%	18%	17%	6%	11%	10%	9%	-	14%	14%	8%	10%	11%	

Purchaser: Price: \$

MARELLAN VESPER (P)

LOT 8

ID: JOBP137

BORN: 13/8/18 (25 MTHS)

WHITE



WINDSOR NORTHERN CEDAR (P)

Sire: BELMORE OREGON L35 (P)

BELMORE MARGO H274 (P)

MARELLAN KING SLICK SKIN (P)

Dam: ROYALLA ISOBEL F352 (P)

MARELLAN ISOBEL 8023 (P)

Top 10% Milk & Maternal Calving Ease, Top 15% Calving Ease & Birth Weight, Top 25% Fat.

An exceptionally long bodied, slick coated white bull with a lot of overall muscle. I'd love to see the progeny of Vesper out of Brahman or Droughtie cows.

Weight	Fat	EMA	IMF	Fleck	Scrotal	Morph.	Mot.
						75%	75%

	CE	BW	WW	YW	Milk	MCE	MWWT	Stay	DOC	CWT	REA	FAT	MARB	YG	API\$
EPD	+10.5	+1.4	+41.7	+64.6	+32.2	+8.4	+53.1	+13.3	+11.1	-11.0	+0.05	-0.084	-0.08	+0.31	\$105.79
RANK %	15	15	95	95	10	10	60	50	50	80	70	25	85	60	55
Acc.	12%	17%	12%	12%	7%	7%	9%	4%	3%	10%	9%	6%	6%	7%	

Purchaser: Price: \$

MARELLAN VINEGAR (H)

ID: JOBP133

BORN: 2/7/18 (26 MTHS)

WHITE

LOT 9



THE GROVE OSCAR A748 (P)

Sire: WEEBOLLABOLLA HIGGINS H82 (P)

WEEBOLLABOLLA JILLAROO Z49 (P)

GOBOTHERY SIRE

Dam: GOBOTHERY 806 (P)

GOBOTHERY COW

Top 20% Yearling Weight & Yield Grade, Top 25% Weaning Weight.

Horned. A big, robust white bull. Lots of doing ability here, combined with performance. A specialist for those roan, quick finishing bullocks. Will breed 100% roan calves if used over Red cows. Remember, Roan Beef: Marbled on the outside, Marbled on the inside.

Weight	Fat	EMA	IMF	Fleck	Scrotal	Morph.	Mot.
						89%	95%

	CE	BW	WW	YW	Milk	MCE	MWWT	Stay	DOC	CWT	REA	FAT	MARB	YG	API\$
EPD	+6.7	+3.5	+59.6	94.6	+20.5	+6.2	+50.3	+12.2	-	-9.6	+0.12	-0.093	+0.00	-0.35	\$107.30
RANK %	70	55	25	20	95	40	75	65	-	70	40	70	40	20	50
Acc.	5%	6%	6%	6%	4%	4%	5%	3%	-	6%	5%	4%	5%	4%	

Purchaser: Price: \$

MARELLAN VISION (P)

ID: JOBP136

BORN: 28/7/18 (26 MTHS)

WHITE

LOT 10



THE GROVE OSCAR A748 (P)

Sire: WEEBOLLABOLLA HIGGINS H82 (P)

WEEBOLLABOLLA JILLAROO Z49 (P)

GOBOTHERY SIRE

Dam: GOBOTHERY 809 (P)

GOBOTHERY COW

Top 20% Yearling Weight & Yield Grade, Top 25% Weaning Weight.

Another good white. Vision has the doing ability we like, but still a bull with even fat coverage. A structurally sound bull that will breed feminine females.

Weight	Fat	EMA	IMF	Fleck	Scrotal	Morph.	Mot.
						97%	80%

	CE	BW	WW	YW	Milk	MCE	MWWT	Stay	DOC	CWT	REA	FAT	MARB	YG	API\$
EPD	+6.7	+3.5	+59.6	+94.6	+20.5	+6.2	+50.3	+12.2	-	-9.6	+0.12	-0.093	+0.00	-0.35	\$107.30
RANK %	70	55	25	20	95	40	75	65	-	70	40	70	40	20	50
Acc.	5%	6%	6%	6%	4%	4%	5%	3%	-	6%	5%	4%	5%	4%	

Purchaser: Price: \$

Temperament, Temperament & Temperament

A friend recently told me about a bloke he knows that has 3 criteria for selecting Bulls to use,

1.Temperament 2.Temperament 3.Temperament

As I get older (and a little slower) I'm incredibly grateful that my parents instilled in me the importance quiet Shorthorn cattle. There were lines that we have avoided over the years because they didn't meet our high standards for temperament. The temperament of our bulls and their progeny is almost a universal compliment from our clients. However, it must be noted that we still have some variation with this trait and we NEVER take it for granted when working with our bulls.

It is a trait we will continue to be vigilant on, both through common sense selection, avoiding certain lines and temperament scoring at weaning, to assist in the accuracy and relevance of our Docility EPD's.



Tempe Appleton with Marellan Shorthorn sired weaners at "Islay Plains" Alpha.
Photos courtesy of Ricky Proelss.

MARELLAN VETO (P)

LOT 11

ID: JOBP106

BORN: 14/7/18 (26 MTHS)

ROAN



THE GROVE OSCAR A748 (P)

Sire: **WEEBOLLABOLLA HIGGINS H82 (P)**
WEEBOLLABOLLA JILLAROO Z49 (P)

GOBOTHERY SIRE

Dam: **GOBOTHERY 815 (P)**
GOBOTHERY COW

Sire is: Top 15% Maternal Calving Ease & Yield Grade, Top 25% Weaning Weight & Yearling Weight, Top 30% Rib Eye Area & Marbling.

A long bodied even coated Roan bull. I think Veto will breed good bullocks that fatten in short windows of opportunity and tremendous F1 females.

PLEASE NOTE, Sire's EPD's.

Weight	Fat	EMA	IMF	Fleck	Scrotal	Morph.	Mot.
						79%	70%

	CE	BW	WW	YW	Milk	MCE	MWWT	Stay	DOC	CWT	REA	FAT	MARB	YG	API\$
EPD	+5.4	+5.8	+58.7	+91.7	+22.1	+7.8	+51.5	+11.8	+8.9	-9.5	+0.16	-0.093	+0.02	-0.36	\$100.99
RANK %	85	95	25	25	95	15	70	70	85	70	30	70	30	15	75
Acc.	23%	27%	28%	29%	19%	18%	22%	13%	7%	24%	24%	17%	22%	19%	

Purchaser: Price: \$

MARELLAN VODOO (P)

LOT 12

ID: JOBP117

BORN: 1/7/18 (27 MTHS)

RED



GOBOTHERY BRED

Sire: **GOBOTHERY CHRIS (P)**
GOBOTHERY BRED

GOBOTHERY SIRE

Dam: **GOBOTHERY 804 (P)**
GOBOTHERY COW

Top 20% Yield Grade, Top 30% RIB Eye Area. Voodoo combines grunt with finishing ability. I little more bone than most, but I think his bullocks will be special. Heavy bullocks that finishing quickly. Tested Homozygous Polled (PP)

Weight	Fat	EMA	IMF	Fleck	Scrotal	Morph.	Mot.
						89%	85%

	CE	BW	WW	YW	Milk	MCE	MWWT	Stay	DOC	CWT	REA	FAT	MARB	YG	API\$
EPD	+3.7	+3.7	+54.9	+71.0	+24.8	+4.0	+52.3	+8.8	-	-9.3	+0.16	-0.089	-0.14	-0.35	\$85.22
RANK %	100	60	35	70	70	80	50	95	-	70	30	45	95	20	100
Acc.	27%	29%	30%	30%	5%	10%	13%	19%	-	33%	34%	29%	29%	28%	

Purchaser: Price: \$

MARELLAN VEGAS (P)

ID: JOBP132

BORN: 7/7/18 (26 MTHS)

RED

LOT 13



SPRYS EXCLUSIVE E021 (P)

Sire: YANCO LEGACY L20

BARVON PATENT A GOLD G76 (P)

ROYALLA SIRE

Dam: WARRABERRY H187 (P)

POTTIE BRED

Sire is: Top 2% Yearling Weight, Top 4% Weaning Weight, Top 10% Carcase Weight, Top 25% Maternal Weaning Weight & Top 30% Docility.

A good robust red. Vegas is a bull with some thickness and length and a great set of rocks.

PLEASE NOTE, Sire's EPD's.

Weight	Fat	EMA	IMF	Fleck	Scrotal	Morph.	Mot.
						92%	80%

	CE	BW	WW	YW	Milk	MCE	MWWT	Stay	DOC	CWT	REA	FAT	MARB	YG	API\$
EPD	+0.3	+7.1	+68.2	+111.3	+23.6	-0.3	+57.7	+11.3	+12.4	+7.3	+0.11	-0.110	-0.13	-0.32	\$87.52
RANK %	100	100	4	2	85	100	25	75	30	10	45	100	95	50	100
Acc.	41%	47%	40%	40%	16%	20%	24%	24%	30%	42%	41%	31%	33%	33%	

Purchaser: Price: \$

MARELLAN VIRTUOSO (P)

ID: JOBP135

BORN: 25/7/18 (26 MTHS)

ROAN

LOT 14



THE GROVE OSCAR A748 (P)

Sire: WEEBOLLABOLLA HIGGINS H82 (P)

WEEBOLLABOLLA JILLAROO Z49 (P)

GOBOTHERY SIRE

Dam: GOBOTHERY 808 (P)

GOBOTHERY COW

Top 20% Yearling Weight & Yield Grade, Top 25% Weaning Weight.

Virtuoso is a sound structure Roan with a nice carcase type and smooth shoulders. I predict he will breed good F1 females.

Tested Homozygous Polled (PP)

Weight	Fat	EMA	IMF	Fleck	Scrotal	Morph.	Mot.
						85%	85%

	CE	BW	WW	YW	Milk	MCE	MWWT	Stay	DOC	CWT	REA	FAT	MARB	YG	API\$
EPD	+6.7	+3.5	+59.6	+94.6	+20.5	+6.2	+50.3	+12.2	-	-9.6	+0.12	-0.093	+0.00	-0.35	\$107.30
RANK %	70	55	25	20	95	40	75	65	-	70	40	70	40	20	50
Acc.	5%	6%	6%	6%	4%	4%	5%	3%	-	6%	5%	4%	5%	4%	

Purchaser: Price: \$

MARELLAN VIPER (P)

ID: JOBP131

BORN: 17/7/18 (26 MTHS)

RED

LOT 15



MARELLAN PROPHET (P)
Sire: MARELLAN STAR
 MARELLAN CAMELOT 0078 (P)

ROYALLA QANTAS (P)
Dam: ROYALLA MARGIE M045 (P)
 ROYALLA MARGIE J442 (P)

Sire is: Top 10% Milk, Top 15% Fat & Carcase Weight & Top 20% Rib Eye Area.

A slick coated, smooth bodied son of Star. A good performance bull, although his weight is affected because he's about as popular in his peer group as Bob Brown was in Clermont.

PLEASE NOTE, Sire's EPD's.

Tested Homozygous Polled (PP)

Photo: Sire Marellan Star

Weight	Fat	EMA	IMF	Fleck	Scrotal	Morph.	Mot.
						71%	75%

	CE	BW	WW	YW	Milk	MCE	MWWT	Stay	DOC	CWT	REA	FAT	MARB	YG	API\$
EPD	+7.2	+3.0	+47.8	+77.7	+32.2	+5.1	+56.1	+11.3	+12.1	+3.5	+0.20	-0.081	-0.13	-0.29	\$95.09
RANK %	60	40	80	70	10	60	35	75	35	15	20	15	95	80	90
Acc.	36%	41%	37%	37%	11%	16%	20%	21%	10%	40%	34%	29%	34%	29%	

Purchaser: Price: \$

MARELLAN WIDE LOAD (P)

ID: JOBQ026

BORN: 19/2/19 (19 MTHS)

ROAN

LOT 16



SPRYS JUNCTION J6 (P)
Sire: ROYALLA SIR LOIN (P)
 ROYALLA PATTIE G193 (P)

MARELLAN PROPHET (P)
Dam: MARELLAN ISOBEL 5088 (P)
 MARELLAN ISOBEL 2018 (P)

Top 15% Yield Grade, Top 25% Rib Eye Area & Top 30% Fat.

Wide Load; this bull has a great carcase, the name is not ironic. Not just a meat bull, Wide Load has a superb carcase coverage. He will breed thick, slick money making bullocks. Would suit all flavours of Bos Indicus cows. Isobel 5088 is also the Dam of Very Clean, who sold for \$19,000 in last years sale.

Weight	Fat	EMA	IMF	Fleck	Scrotal	Morph.	Mot.
						93%	85%

	CE	BW	WW	YW	Milk	MCE	MWWT	Stay	DOC	CWT	REA	FAT	MARB	YG	API\$
EPD	+8.4	+3.2	+50.0	+77.0	+29.2	+5.7	+54.2	+9.9	-	-13.4	+0.17	-0.085	-0.02	-0.36	\$100.01
RANK %	40	45	70	70	35	50	50	90	-	90	25	30	50	15	80
Acc.	16%	22%	17%	17%	6%	9%	10%	8%	-	13%	13%	9%	10%	10%	

Purchaser: Price: \$

Paddock Performance



Outstanding, Organic Certified: Marellan Shorthorn sired/Droughtmaster Steer, Appleton Cattle Co, "Islay Plains" Alpha.

Just **IMAGINE** what he will look like after the season of grass ahead of him!

Marellan Shorthorns *"Bred for Bos Indicus Cows" Bull Sale*

Monday 28th Sept 2020

ONLINE & ON PROPERTY "Emerald Downs" Emerald

 **marellan**
shorthorns
Bred for Bos Indicus Cows!

LINCOLN & LISA JOB 0404 083 438
EMERALD QUEENSLAND
lincolnandlisa@marellan.com.au
www.marellan.com.au



MARELLAN WAISALE (H)

ID: JOBQ047

BORN: 7/3/19 (18 MTHS)

RED & WHITE

LOT 17



WEEBOLLABOLLA BOSWORTH (OP)
Sire: MARELLAN NICODEMUS (P)
 MARELLAN ISOBEL 7152 (P)

MARELLAN MR SLICK (P)
Dam: MARELLAN MOLLY 3195 (P)
 MARELLAN MOLLY 1245 (H)

Top 3% Fat, Top 10% Maternal Calving Ease, Top 15% Calving Ease & Top 20% Birth Weight.

Horned. A tremendous bull; length, width and class with environmentally superior genetics (Nicodemus X Molly 3195). If you want young, clean coated, heavy bullocks with meat quality, quantity and performance, then Waisale is for you. We will use this bull through ET in our herd.

Weight	Fat	EMA	IMF	Fleck	Scrotal	Morph.	Mot.
						85%	85%

	CE	BW	WW	YW	Milk	MCE	MWWT	Stay	DOC	CWT	REA	FAT	MARB	YG	API\$
EPD	+11.0	+2.0	+36.9	+53.4	+27.5	+8.9	+46.0	+12.9	-	-15.4	-0.10	-0.067	-0.18	-0.24	\$95.94
RANK %	15	20	100	100	50	10	95	55	-	95	100	3	100	100	90
Acc.	20%	22%	22%	22%	11%	14%	15%	12%	-	27%	25%	14%	16%	19%	

Purchaser: Price: \$

MARELLAN WINGER (P)

ID: JOBQ040

BORN: 26/2/19 (19 MTHS)

RED

LOT 18



MEL-BAR RODEO 347 (P)
Sire: BYLAND MISSION (P) (IMP USA)
 BYLAND CINDY BEAUTY (P)

MARELLAN MR SLICK (P)
Dam: MARELLAN MOLLY 3195 (P)
 MARELLAN MOLLY 1245 (H)

Top 4% Maternal Calving Ease, Top 10% Calving Ease & Birth Weight, Top 15% Stayability, Top 20% Fat & Top 25% API.

Like all good Wingers - an ideal balance of power and athleticism, great on his feet and tremendous finishing ability. From the Super cow, Molly 3195, who we predict will end up being one of the most influential Marellan Shorthorn cows ever in the ticks. Mission is the only imported bull that we know goes well in the ticks. Born in 1996, we started using him again after his daughters got to 10yrs. The photo of Winger is deceptive, this bull is thick topped and thick from behind.

Tested Homozygous Polled (PP)

Weight	Fat	EMA	IMF	Fleck	Scrotal	Morph.	Mot.
						86%	90%

	CE	BW	WW	YW	Milk	MCE	MWWT	Stay	DOC	CWT	REA	FAT	MARB	YG	API\$
EPD	+11.7	+0.8	+42.1	+60.9	+24.5	+9.4	+45.6	+16.2	-	-16.7	+0.02	-0.083	-0.07	-0.32	\$114.26
RANK %	10	10	95	100	80	4	95	15	-	95	80	20	80	50	25
Acc.	21%	23%	23%	23%	16%	16%	18%	14%	-	30%	28%	18%	20%	22%	

Purchaser: Price: \$

marellan
shorthorns

marellan
shorthorns

www.ROAN

marellan
shorthorns

marellan
shorthorns

Marbled on the Outside



• JBS Thousand Guineas
Shorthorn Beef



**Breed those Saleable, Profitable and Great Tasting Roan
Bulls OR keep them Red instead by joining your Rec**

BEEF.com.au

– Marbled on the Inside



in Bullocks by using Roan (& White) Marellan Shorthorn
I Bos Indicus Cows to Red Marellan Shorthorn Bulls

MARELLAN WEBALEE (P)

ID: JOBQ072

BORN: 8/4/19 (17 MTHS)

ROAN

LOT 19



WEEBOLLABOLLA QUILPIE Q18 (P)

Sire: WEEBOLLABOLLA THEODORE T85 (P)

WEEBOLLABOLLA NINDETHANA (P)

WARRABERRY FARLEY (P)

Dam: WARRABERRY CHANCE J141 (P)

YAMBURGAN C323 (P)

Top 10% Calving Ease, Top 20% Maternal Calving Ease & Yield Grade, Top 30% Milk, Stayability & API.

A big soggy bull. A tremendous Theodore son with loads of performance. Big bullocks that are easy to finish will be his specialty. A 3/4 and maternal brother to Stoic, top seller in our 2017 bull sale. Note his young age.

Tested Homozygous Polled (PP)

Weight	Fat	EMA	IMF	Fleck	Scrotal	Morph.	Mot.
						72%	70%

	CE	BW	WW	YW	Milk	MCE	MWWT	Stay	DOC	CWT	REA	FAT	MARB	YG	API\$
EPD	+11.7	+2.6	+53.5	+82.8	+29.7	+7.6	+56.5	+14.5	-	-12.6	+0.09	-0.093	-0.10	-0.35	\$111.85
RANK %	10	35	50	50	30	20	35	30	-	85	55	70	90	20	30
Acc.	22%	24%	22%	22%	16%	16%	18%	16%	-	22%	21%	16%	19%	17%	

Purchaser: Price: \$

MARELLAN WHOOP WHOOP (P)

ID: JOBQ032

BORN: 13/2/19 (19 MTHS)

ROAN

LOT 20



DUNBEACON DAMPIER (P)

Sire: MARELLAN SUVA (P)

MARELLAN MOLLY 3195 (P)

MARELLAN QUEENSLAND RED (P)

Dam: MARELLAN FULLGLOSS 6114 (P)

ROYALLA FULLGLOSS 7261 (P)

Top 25% Calving Ease & Birth Weight.

If you want to produce big smooth bullocks, Whoop Whoop is a great option. He is a slick coated bull with tremendous length and smooth musculature. Bred for the back of Whoop Whoop and beyond.

Tested Homozygous Polled (PP)

Weight	Fat	EMA	IMF	Fleck	Scrotal	Morph.	Mot.
						90%	70%

	CE	BW	WW	YW	Milk	MCE	MWWT	Stay	DOC	CWT	REA	FAT	MARB	YG	API\$
EPD	+9.3	+2.2	+45.7	+66.3	+26.0	+6.0	+48.9	+10.2	+11.9	-7.8	+0.04	-0.096	-0.15	-0.32	\$93.61
RANK %	25	25	85	95	65	45	85	85	35	60	70	85	100	45	95
Acc.	17%	19%	17%	17%	5%	8%	9%	9%	3%	17%	16%	12%	14%	13%	

Purchaser: Price: \$

MARELLAN WILLIE O (P)

ID: JOBQ022

BORN: 1/1/19 (20 MTHS)

RLW

LOT 21



MARELLAN SIRE

Sire: MARELLAN SIRE

MARELLAN COW

MARELLAN NICODEMUS (P)

Dam: MARELLAN IDA 6107 (P)

ROYALLA IDA 8364 (P)

Dam is: Top 2% Milk & Maternal Calving Ease, Top 3% Maternal Weaning Weight & Fat, Top 10% Docility & Top 15% Calving Ease.

A super think made bull. Sound structured, and easy doing. Dam is a ultra feminine Nicodemus cow from the same family line as Sid. Sire is an unknown Marellan Bull. Fortunately it is known that Willie O will breed really commercially focused progeny.

PLEASE NOTE, Dam's EPD's.

Tested Homozygous Polled (PP)

Weight	Fat	EMA	IMF	Fleck	Scrotal	Morph.	Mot.
						88%	75%

	CE	BW	WW	YW	Milk	MCE	MWWT	Stay	DOC	CWT	REA	FAT	MARB	YG	API\$
EPD	+10.8	+5.1	+57.8	+85.5	+36.3	+10.5	+65.2	+13.3	+15.1	-13.4	+0.11	-0.071	-0.05	-0.30	\$106.95
RANK %	15	90	30	45	2	2	3	50	10	90	45	3	70	65	50
Acc.	37%	43%	42%	42%	17%	21%	25%	24%	14%	43%	41%	28%	34%	32%	

Purchaser: Price: \$

MARELLAN WASHINGTON (P)

ID: JOBQ057

BORN: 19/4/19 (17 MTHS)

ROAN

LOT 22



SPRYS JUNCTION J6 (P)

Sire: ROYALLA SIR LOIN (P)

ROYALLA PATTIE G193 (P)

MARELLAN HUM DINGER (P)

Dam: MARELLAN MOLLY 9156 (P)

MARELLAN MOLLY 5027 (P)

Top 20% Fat.

A performance orientated bull, I like his meaty carcass and big rocks. His feeder steer progeny will be the type the feedlot like. Molly 9156 is also the granddam of Molly 3195. Note his young age.

Tested Homozygous Polled (PP)

Weight	Fat	EMA	IMF	Fleck	Scrotal	Morph.	Mot.
						89%	75%

	CE	BW	WW	YW	Milk	MCE	MWWT	Stay	DOC	CWT	REA	FAT	MARB	YG	API\$
EPD	+8.1	+3.7	+51.7	+77.3	+29.2	+4.7	+55.1	+12.8	-	-10.8	+0.13	-0.082	-0.07	-0.33	\$101.47
RANK %	45	60	60	70	35	70	45	55	-	75	40	20	80	40	75
Acc.	14%	15%	15%	15%	10%	9%	12%	9%	-	14%	13%	10%	11%	11%	

Purchaser: Price: \$

MARELLAN WHITEWASH (P)

LOT 23

ID: JOBQ041

BORN: 4/3/19 (18 MTHS)

WHITE

Sire: WEEBOLLABOLLA BOSWORTH (P)
MARELLAN NICODEMUS (P)
MARELLAN ISOBEL 7152 (P)

Dam: MARELLAN MR SLICK (P)
MARELLAN MOLLY 3195 (P)
MARELLAN MOLLY 1245 (H)

Top 3% Fat, Top 10% Maternal Calving Ease, Top 15% Calving Ease & Top 20% Birth Weight.

Another top son of Molly 3195 x Nicodemus. Great nuts, and smooth body. Was one of my absolute favourites until he took a 3 week detour into a mob of hungry heifers. This set him back considerably, but wont stop him from breeding tremendous roan bullocks and replacement females.

Tested Homozygous Polled (PP)

Weight	Fat	EMA	IMF	Fleck	Scrotal	Morph.	Mot.
						88%	65%

	CE	BW	WW	YW	Milk	MCE	MWWT	Stay	DOC	CWT	REA	FAT	MARB	YG	API\$
EPD	+11.0	+2.0	+36.9	+53.4	+27.5	+8.9	+46.0	+12.9	-	-15.4	-0.10	-0.067	-0.18	-0.24	\$95.94
RANK %	15	20	100	100	50	10	95	55	-	95	100	3	100	100	90
Acc.	20%	22%	22%	22%	11%	14%	15%	12%	-	27%	25%	14%	16%	19%	

Purchaser: Price: \$

MARELLAN WATJAMECALIT (P)

LOT 24

ID: JOBQ046

BORN: 2/3/19 (18 MTHS)

RLW

Sire: WEEBOLLABOLLA BOSWORTH (P)
MARELLAN NICODEMUS (P)
MARELLAN ISOBEL 7152 (P)

Dam: MARELLAN MR SLICK (P)
MARELLAN MOLLY 3195 (P)
MARELLAN MOLLY 1245 (H)

Top 3% Fat, Top 10% Maternal Calving Ease, Top 15% Calving Ease & Top 20% Birth Weight.

The 4th Bull in the sale from Molly 3195 X Nicodemus. A low maintenance type bull with very good length and ample shape.

Weight	Fat	EMA	IMF	Fleck	Scrotal	Morph.	Mot.
						91%	80%

	CE	BW	WW	YW	Milk	MCE	MWWT	Stay	DOC	CWT	REA	FAT	MARB	YG	API\$
EPD	+11.0	+2.0	+36.9	+53.4	+27.5	+8.9	+46.0	+12.9	-	-15.4	-0.10	-0.067	-0.18	-0.24	\$95.94
RANK %	15	20	100	100	50	10	95	55	-	95	100	3	100	100	90
Acc.	20%	22%	22%	22%	11%	14%	15%	12%	-	27%	25%	14%	16%	19%	

Purchaser: Price: \$

Molly 3195 (P) - no ordinary cow!

Our long-term survival average for Cattle that we introduced was about 33%, it would have been much higher (in the short term) if we believed in cotton wool and wiping backside. But for the long-term value of our herd we needed to set the bar high. Environment Selection Pressure is at the absolute core of our breeding philosophies – but it is not always fair. I know there are management practises that we can smooth out the seasonal conditions to make our environment selection pressure more consistent and fairer. But the reality is that seasons are different and when we first came into the ticks my experience was limited. In 2014, Molly 3195 was brought into the ticks as a young pregnant heifer. She came with a peer group of 52. Faced with a very ordinary season for the first few years, she handled everything that was thrown at her. Of those 52, only 2 remain in our herd now. That is remaining rate of 3.8%. Molly 3195 is without doubt one of the most valuable cows we have ever owned. On a very hot day early this year, I noticed three 10-month heifers were out grazing in the middle of the day, well away from shade. I went down and checked who they were. All 3 were ET daughters of Molly 3195. In addition to this, all of her progeny that we have scanned have had very high IMF's and they are also in the top few for weaning and yearling weights. Genuine Northern Survivability, Northern Meat Quality and Northern Performance.



Our ambition is to do more DNA analysis of Molly 3195 and other of our most 'northern elite' females. The current DNA chip (the model that is used to interpret DNA) does not take into account the unique survivability attributes required to prosper in our environment.

MARELLAN WALLY MUNRO (P)

ID: JOBQ011

BORN: 26/1/19 (20 MTHS)

RED

LOT 25



WEEBOLLABOLLA QUILPIE Q18 (P)

Sire: WEEBOLLABOLLA THEODORE T85 (P)

WEEBOLLABOLLA NINDETHANA (P)

MARELLAN REDS (P)

Dam: MARELLAN EDEL 6207 (P)

MARELLAN EDEL 4080 (P)

Top 2% Birth Weight, Top 4% Calving Ease, Top 10% Maternal Calving Ease, Top 15% Docility, Top 25% Milk & Top 30% Fat.

A super Theodore son. Wally Munro is a low birth weight with soft, easy doing carcass type. His dam, Edel 6207 is a top young cow, Granddam, Edel 4080 is in our donor program. Named after the late Mr Wally Munro of Weebollabolla, whom I had the pleasure of meeting on a number of occasions.

Tested Homozygous Polled (PP)

Weight	Fat	EMA	IMF	Fleck	Scrotal	Morph.	Mot.
						80%	70%

	CE	BW	WW	YW	Milk	MCE	MWWT	Stay	DOC	CWT	REA	FAT	MARB	YG	API\$
EPD	+13.1	-1.0	+40.0	+57.9	+29.9	+8.8	+49.9	+13.5	+13.6	-16.9	+0.01	-0.085	-0.12	-0.32	\$110.12
RANK %	4	2	100	100	25	10	80	45	15	95	80	30	95	40	40
Acc.	29%	36%	29%	29%	20%	23%	23%	15%	11%	22%	21%	16%	18%	17%	

Purchaser: Price: \$

MARELLAN WALES (P)

ID: JOBQ015

BORN: 30/1/19 (20 MTHS)

RED

LOT 26



WEEBOLLABOLLA QUILPIE Q18 (P)

Sire: WEEBOLLABOLLA THEODORE T85 (P)

WEEBOLLABOLLA NINDETHANA (P)

MARELLAN Q-BULL (S)

Dam: MARELLAN 6200 (P)

MARELLAN 4412 (P)

Top 15% Calving Ease & Birth Weight & Top 20% Maternal Calving Ease.

A long and athletic Theodore son. I admire his clean coat, muscularity and smooth body. Wales is a bull that can be used on heifers or cows. Dam is a feminine young slick cow.

Weight	Fat	EMA	IMF	Fleck	Scrotal	Morph.	Mot.
						93%	85%

	CE	BW	WW	YW	Milk	MCE	MWWT	Stay	DOC	CWT	REA	FAT	MARB	YG	API\$
EPD	+11.2	+1.3	+45.9	+73.0	+27.6	+7.6	+50.6	+13.0	+10.0	+26.2	-0.11	-0.089	-0.25	-0.33	\$99.17
RANK %	15	15	85	80	50	20	75	55	65	100	100	50	100	35	80
Acc.	25%	32%	26%	25%	16%	19%	19%	15%	18%	21%	20%	16%	18%	17%	

Purchaser: Price: \$

MARELLAN WHIPPET (P)

ID: JOBQ008

BORN: 28/1/19 (20 MTHS)

RED

LOT 27



WEEBOLLABOLLA QUILPIE Q18 (P)
Sire: WEEBOLLABOLLA THEODORE T85 (P)
 WEEBOLLABOLLA NINDETHANA (P)
 MARELLAN Q-BULL (S)
Dam: MARELLAN LEMON MERINGUE 6187 (P)
 MARELLAN LEMON MERINGUE 4435 (P)

Top 10% Calving Ease & Maternal Calving Ease, Top 20% Birth Weight & Fat & Top 30% Milk.
 Another long bodied Calving ease son of Theodore.
 With trademark doing ability and constitution.
 Tested Homozygous Polled (PP)

Weight	Fat	EMA	IMF	Fleck	Scrotal	Morph.	Mot.
						88%	70%

	CE	BW	WW	YW	Milk	MCE	MWWT	Stay	DOC	CWT	REA	FAT	MARB	YG	API\$
EPD	+12.2	+1.7	+49.1	+72.4	+29.4	+8.2	+54.0	+11.7	+12.5	-21.9	-0.08	-0.083	-0.25	-0.31	\$97.41
RANK %	10	20	70	85	30	10	50	70	30	100	95	20	100	60	85
Acc.	25%	32%	26%	26%	16%	20%	19%	15%	17%	21%	20%	16%	18%	17%	

Purchaser: Price: \$

MARELLAN WOHAN (P)

ID: JOBQ010

BORN: 26/1/19 (20 MTHS)

ROAN

LOT 28



WEEBOLLABOLLA QUILPIE Q18 (P)
Sire: WEEBOLLABOLLA THEODORE T85 (P)
 WEEBOLLABOLLA NINDETHANA (P)
 MARELLAN ROB HORNE (P)
Dam: MARELLAN DUCHESS 6264 (P)
 MARELLAN DUCHESS 4183 (P)

Top 3% Calving Ease, Top 4% Birth Weight, Top 15% Maternal Calving Ease & Top 15% API.
 Wohan is a good low maintenance type of roan bull that will transmit doing ability into his progeny. Again a low birth weight option for heifer joining's.

Weight	Fat	EMA	IMF	Fleck	Scrotal	Morph.	Mot.
						70%	65%

	CE	BW	WW	YW	Milk	MCE	MWWT	Stay	DOC	CWT	REA	FAT	MARB	YG	API\$
EPD	+13.7	+0.1	+46.9	+74.3	+27.8	+8.4	+51.3	+14.2	+11.3	-18.5	+0.06	-0.089	-0.06	-0.35	\$118.15
RANK %	3	4	80	80	45	10	70	35	45	100	65	50	75	15	15
Acc.	21%	22%	23%	23%	15%	17%	18%	16%	12%	21%	21%	16%	19%	17%	

Purchaser: Price: \$

MARELLAN WASP (H)

ID: JOBQ044

BORN: 3/3/19 (18 MTHS)

RED

LOT 29



WEEBOLLABOLLA BOSWORTH (P)
Sire: MARELLAN NICODEMUS (P)
 MARELLAN ISOBEL 7152 (P)

MARELLAN MR SLICK (P)
Dam: MARELLAN MOLLY 3195 (P)
 MARELLAN MOLLY 1245 (H)

Top 3% Fat, Top 10% Maternal Calving Ease, Top 15% Calving Ease & Top 20% Birth Weight.

Yet another Molly 3195 X Nicodemus. Really nice thick meaty carcase. A bull designed for Bos Indicus females.

Weight	Fat	EMA	IMF	Fleck	Scrotal	Morph.	Mot.
						93%	85%

	CE	BW	WW	YW	Milk	MCE	MWWT	Stay	DOC	CWT	REA	FAT	MARB	YG	API\$
EPD	+11.0	+2.0	+36.9	+53.4	+27.5	+8.9	+46.0	+12.9	-	-15.4	-0.10	-0.067	-0.18	-0.24	\$95.94
RANK %	15	20	100	100	50	10	95	55	-	95	100	3	100	100	90
Acc.	20%	22%	22%	22%	11%	14%	15%	12%	-	28%	25%	14%	16%	19%	

Purchaser: Price: \$

MARELLAN UNCLE ELVIN (P)

ID: JOBP061

BORN: 4/11/18 (22 MTHS)

ROAN

LOT 30



MARELLAN PROPHET (P)
Sire: MARELLAN SID (P)
 MARELLAN IDA 2012 (P)

CRATHES FLYING SPUR (P)
Dam: MARELLAN LAUREL 5073 (P)
 MARELLAN LAUREL 1102 (P)

Top 4% Milk, Top 10% Maternal Weaning Weight, Top 15% Birth Weight & Fat, Top 20% API, Top 25% Calving Ease, Yearling Weight & Top 30% Stayability.

A top Sid son. Uncle Elvin has always been one of my favourites. A bull with a great topline, good coat and width through his spine. Our selection pressure means that our bulls weight less on sale day, but are much more likely to survive, thrive and be profitable in your herd.

Weight	Fat	EMA	IMF	Fleck	Scrotal	Morph.	Mot.
						96%	75%

	CE	BW	WW	YW	Milk	MCE	MWWT	Stay	DOC	CWT	REA	FAT	MARB	YG	API\$
EPD	+9.7	+1.4	+55.0	+90.8	+34.5	+6.1	+62.0	+14.6	+10.6	-8.8	-0.04	-0.081	-0.04	-0.26	\$115.69
RANK %	25	15	45	25	4	40	10	30	55	65	90	15	65	95	20
Acc.	17%	20%	18%	18%	6%	9%	10%	9%	3%	27%	26%	13%	14%	19%	

Purchaser: Price: \$



INTRODUCING *the new* PREMIUM SHORTHORN BRANDED PROGRAMME

THE STORY OF THOUSAND GUINEAS

The story begins in the North East of England in the 18th century, where Teeswater & Durham cattle breeds were being refined using selective breeding techniques by Charles and Robert Colling. This program would go on to give rise to one of the *most highly sought after beef cattle breeds* anywhere in the world... **THE SHORTHORN.**

The culmination of this breeding program was the birth of the bull Comet in 1804, who, in 1810 went on to fetch 1,000 Guineas at the Brafferton sale, breaking all records as the first bull to draw such a price tag.

THIS BLOODLINE would go on to be a key influencer in the Modern Shorthorn breed that is celebrated for its superb eating qualities.

SUPERIOR IN TASTE

WITH THOUSAND GUINEAS you will enjoy an open texture with a buttery flavour, a great bite *and lots of juice*. Perfectly suited for that special occasion when friends, family or colleagues come together to share a richly rewarding *moment in time*.

SPECIFICATIONS

BREED TYPE	Shorthorn (VERIFIED & ACCREDITED)
FEEDING REGIME	Grain fed
LIVESTOCK GRADE	YP (0-4 tooth)
EATING QUALITY ASSURANCE	MSA graded
MARBLE SCORE	2+
MEAT COLOUR	1B - 3
FAT COLOUR	0 - 3



WORTH ITS WEIGHT IN GOLD



WANT TO BE PART OF THIS EXCLUSIVE BRAND?

CONTACT YOUR NEAREST
JBS LIVESTOCK BUYER.

NSW

KEITH HAMMOND DUBBO 0428 849230
 RICHARD SADLER TAMWORTH 0429 667866
 TONY CLIFFORD SCONE 0428 683050
 RON WEBSTER ARMIDALE 0428 492467
 STEWART BULMER TENTERFIELD 0428 666973
 ALLAN EURELL WAGGA 0428 694526
 PETER STEER ALBURY/WODONGA 0427 343094
 NEALE FLANAGAN ALBURY/WODONGA 0418 357133
 RON CRUICKSHANK COWRA 0428 795620

QLD

SCOTT CARSWELL TOOWOOMBA 0428 727202
 JASON CARSWELL TOOWOOMBA 0499 773878
 JOHN NORRIS TOOWOOMBA 0427 776514
 DAMIAN GOULD ROMA 0428 188351
 MATT CURTIS BIGGENDAN 0427 556037
 BRAD HALL ROLLESTON 0400 782707
 SIMON FRASER CLERMONT 0400 314281
 LIAM WELLER LONGREACH 0429 193612



MARELLAN VANGUARD (P)

ID: JOBP076

BORN: 23/10/18 (23 MTHS)

ROAN

LOT 31



WEEBOLLABOLLA BOSWORTH (P)
Sire: MARELLAN NICODEMUS (P)
 MARELLAN ISOBEL 7152 (P)

MOOMBI ZORO C21 (P)
Dam: MARELLAN BELINDA 0228 (P)
 MARELLAN BELINDA 7204 (P)

Top 5% Fat, Top 15% Docility, Top 20% Maternal Calving Ease, Top 25% Milk.

Vanguard is a complete roan. He has width and doing ability combined with length and soundness of structure. His dam, Belinda 0228 has bred numerous good progeny.

Photo: Marellan Nicodemus (P), Sire of Lots 17, 23, 24, 29, 31, 32 & 33.

Weight	Fat	EMA	IMF	Fleck	Scrotal	Morph.	Mot.
						88%	80%

	CE	BW	WW	YW	Milk	MCE	MWWT	Stay	DOC	CWT	REA	FAT	MARB	YG	API\$
EPD	+8.7	+4.3	+48.4	+73.6	+30.3	+7.6	+54.5	+9.5	+13.9	-9.5	+0.00	-0.075	-0.02	-0.26	\$96.03
RANK %	35	75	75	80	25	20	45	90	15	70	85	5	50	95	90
Acc.	20%	24%	22%	23%	14%	14%	17%	14%	8%	29%	27%	14%	17%	20%	

Purchaser: Price: \$

MARELLAN VALIANT (P)

ID: JOBP058

BORN: 29/10/18 (23 MTHS)

ROAN

LOT 32



WEEBOLLABOLLA BOSWORTH (P)
Sire: MARELLAN NICODEMUS (P)
 MARELLAN ISOBEL 7152 (P)

MOOMBI ZORO C21 (P)
Dam: MARELLAN BELINDA 0228 (P)
 MARELLAN BELINDA 7204 (P)

Top 5% Fat, Top 15% Docility, Top 20% Maternal Calving Ease, Top 25% Milk.

Just like his full brothers, Carcase and Coverage. Valiant will breed quick finishing progeny, we recommend him for producers wanting to turn off young progeny. We believe that speed of finish is a massive profit driver in the Northern Beef Industry. A real Shorthorn Roan - Marbled on the outside, Marbled on the inside.

Weight	Fat	EMA	IMF	Fleck	Scrotal	Morph.	Mot.
						82%	70%

	CE	BW	WW	YW	Milk	MCE	MWWT	Stay	DOC	CWT	REA	FAT	MARB	YG	API\$
EPD	+8.7	+4.3	+48.4	+73.6	+30.3	+7.6	+54.5	+9.5	+13.9	-9.5	+0.00	-0.075	-0.02	-0.26	\$96.03
RANK %	35	75	75	80	25	20	45	90	15	70	85	5	50	95	90
Acc.	20%	24%	22%	23%	14%	14%	17%	14%	8%	29%	28%	14%	17%	21%	

Purchaser: Price: \$

MARELLAN VACUUM (P)

ID: JOBP056

BORN: 22/10/18 (23 MTHS)

ROAN

LOT 33



WEEBOLLABOLLA BOSWORTH (P)
Sire: MARELLAN NICODEMUS (P)
 MARELLAN ISOBEL 7152 (P)

MOOMBI ZORO C21 (P)
Dam: MARELLAN BELINDA 0228 (P)
 MARELLAN BELINDA 7204 (P)

Top 5% Fat, Top 15% Docility, Top 20% Maternal Calving Ease, Top 25% Milk.

A spotty roan. Vacuum is similar type to his sire, Carcase and Coverage and good on the tastebuds. Remember, Roan Beef; Marbled on the Outside, Marbled on the Inside.

Tested Homozygous Polled (PP)

Weight	Fat	EMA	IMF	Fleck	Scrotal	Morph.	Mot.
						70%	75%

	CE	BW	WW	YW	Milk	MCE	MWWT	Stay	DOC	CWT	REA	FAT	MARB	YG	API\$
EPD	+8.7	+4.3	+48.4	+73.6	+30.3	+7.6	+54.5	+9.5	+13.9	-9.5	+0.00	-0.075	-0.02	-0.26	\$96.03
RANK %	35	75	75	80	25	20	45	90	15	70	85	5	50	95	90
Acc.	20%	24%	22%	23%	14%	14%	17%	14%	8%	29%	28%	14%	17%	21%	

Purchaser: Price: \$

MARELLAN VIRIVIRI (P)

ID: JOBP103

BORN: 1/12/18 (21 MTHS)

ROAN

LOT 34



BYLAND MISSION (P) (IMP USA)
Sire: MARELLAN LAND LORD (P)
 MARELLAN CAMELOT 4248 (P)

MARELLAN NICODEMUS (P)
Dam: MARELLAN DUCHESS 2176 (P)
 MARELLAN DAINTY DUCHESS 9358 (P)

Top 5% Stayability, Top 10% Milk & Top 20% Maternal Calving Ease.

This is a Viri Viri good bull. I love his soft skin and soft muscle type. From my experience with Shorthorn Cattle, soft pliable skin seems to be positively correlated with a the profitable trifecta of Speed of finish, meat quality and a strong constitution. His dam, Duchess 2176 is my favourite Nicodemus cow. She has been part of our donor program. Land Lord was a really sound, easy muscled bull when we sold him in his 10th year.

Weight	Fat	EMA	IMF	Fleck	Scrotal	Morph.	Mot.
						92%	75%

	CE	BW	WW	YW	Milk	MCE	MWWT	Stay	DOC	CWT	REA	FAT	MARB	YG	API\$
EPD	+7.6	+3.6	+41.8	+61.1	+32.6	+7.3	+53.5	+17.3	+12.3	-20.4	-0.04	-0.091	-0.02	-0.33	\$108.65
RANK %	55	55	95	100	10	20	55	5	30	100	90	60	50	30	45
Acc.	22%	30%	24%	24%	12%	14%	16%	13%	9%	27%	27%	16%	16%	21%	

Purchaser: Price: \$

MARELLAN VAQUERO (P)

ID: JOBP094

BORN: 22/11/18 (22 MTHS)

ROAN

LOT 35



BYLAND MISSION (P) (IMP USA)
Sire: MARELLAN LAND LORD (P)
 MARELLAN CAMELOT 4248 (P)

MARELLAN LOTE TUQIRI (P)
Dam: MARELLAN LAUREL 1102 (P)
 MARELLAN LAUREL 4034 (P)

Top 3% Fat, Top 10% Milk & Stayability, Top 20% Maternal Calving Ease & API, Top 25% Calving Ease & Marbling.

A nicely put together roan. A bull that could be used over heifers, to produce really saleable F1 progeny. His dam is a survivor, the only type we tolerate.

Weight	Fat	EMA	IMF	Fleck	Scrotal	Morph.	Mot.
						86%	85%

	CE	BW	WW	YW	Milk	MCE	MWWT	Stay	DOC	CWT	REA	FAT	MARB	YG	API\$
EPD	+9.7	+2.8	+44.1	+66.9	+32.4	+7.4	+54.5	+17.0	+11.3	-24.7	-0.19	-0.067	+0.03	-0.24	\$116.09
RANK %	25	35	90	95	10	20	45	10	45	100	100	3	25	100	20
Acc.	20%	23%	21%	21%	13%	14%	16%	12%	8%	29%	28%	15%	17%	21%	

Purchaser: Price: \$

MARELLAN VOLCANO (P)

ID: JOBP057

BORN: 22/10/18 (23 MTHS)

RED & WHITE

LOT 36



SPRYS ISABELLA'S MASTER (P)
Sire: MARELLAN QUEENSLANDER (P)
 ROYALLA MARGIES MEMORY 9054 (P)

THE GROVE KOOKABURRA W735 (P)
Dam: RONELLE PARK NANDI A507 (P)
 RENRUT NANDI 2ND (P)

Top 20% Yeild Grade, Top 30% Stayability & Rib Eye Area.

Perhaps the best Queenslander bull we have bred. White Sox with tremendous carcass shape. His calves will definitely fill the branding cradle. A cracker of a bull late in the sale.

Tested Homozygous Polled (PP)

Weight	Fat	EMA	IMF	Fleck	Scrotal	Morph.	Mot.
						89%	80%

	CE	BW	WW	YW	Milk	MCE	MWWT	Stay	DOC	CWT	REA	FAT	MARB	YG	API\$
EPD	+6.6	+3.8	+54.3	+82.4	+29.2	+6.2	+56.4	+14.7	+11.3	-10.4	+0.15	-0.088	-0.01	-0.35	\$108.06
RANK %	70	60	45	55	35	40	35	30	45	75	30	45	45	20	45
Acc.	13%	19%	16%	16%	10%	9%	12%	10%	4%	24%	22%	12%	13%	17%	

Purchaser: Price: \$

Selection - Structure & Lameness

by Alex ASHWOOD

Today's beef producers face many different management challenges including increased herd sizes and larger cattle which impact on herd health particularly leg and feet structure and lameness.

"Lameness has a positive genetic correlation to reduced performance"

Foot and leg problems can be a major herd problem due to reduced performance (weight gain and reproduction) resulting in lower productivity and increased economic losses.

Fig 1 illustrates the four main groups of factors which can directly lead to lameness or which interact and subsequently intensify minor stimuli sufficiently to cause subacute or acute lameness.

Nutrition, environment, disease and genetic influences combine with management factors to predispose stock to lameness.

Foot and leg conformation have less predictable heritability (0.8-0.16) than the measurable performance traits (eg mature weight 0.50). Nevertheless, structural traits and problems are heritable and need to be fully considered when purchasing and breeding seed stock.

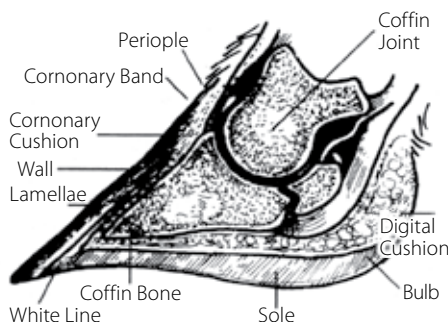
"Foot problems compounded by poor leg structure cause lameness"

In order to fully understand lameness it is advantageous to become familiar with the anatomy of the foot and the basic structure of the legs, shoulder and hindquarter.

FOOT STRUCTURE

The conformation of the foot (Fig 2) should be short and steeply angled, high in the heel and even clawed. The sole should be

FIGURE 2 : CROSS SECTION OF THE FOOT



Source : Zinpro®

somewhat concave with the majority of weight placed on the hoof wall.

The anatomy of the foot (Fig 2) indicates the complexity of the structure and clearly demonstrates why structural faults and problems lead to foot damage and lameness.

- Coronary Band – is normally soft and shiny and grows at the rate of 5 millimetres per month. This is an area that can be easily penetrated by foreign objects particularly between the toes
- Bulb – is the continuous with the coronary band and is composed of soft rubber horn.
- Wall – is smooth and shiny and consists of a very tough tubular horn
- Coronary Cushion – is a mass of elastic tissue and veins beneath the coronary band. When the animal moves, the cushion pumps blood through the foot and back into the body.
- Lamellae – there are hundreds of tiny ridges in the lower part of the inside wall which are attached by fibres to the coffin bone.
- Periople – is the area where the skin meets the coronary band. It is here that laminitis is often first noticed.



- Corium – sometimes called the 'guide or dermis' produces hoof horn (wall). The health of the corium establishes the quality of the hoof produced. Reduced quality leads to foot damage and lameness. Extreme concussion to the corium due to poor leg structure creates sensitivity, pain and lameness.
- Coffin Bone – sometimes called the pedal bone is suspended within the corium and when damaged or stressed causes severe lameness.
- White Line – is a greyish area where the sole meets the hoof. Its function is to separate sensitive tissue from non sensitive tissue. It is an area that can be easily penetrated by foreign objects, particularly with faulty foot structure
- Digital Cushion – is situated inside the bulb and functions as an elastic shock absorber. It also forces blood back into the limbs as the animal walks.

Foot defects (eg scissor and corkscrew claws) are genetic (inherited) and overgrown feet is generally a sign of poor leg structure and/or nutritional problems.

▶ 34

FIGURE 3 : EXAMPLES OF FOOT DEFECTS

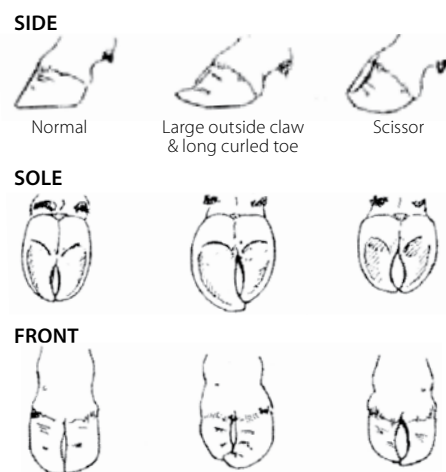


FIGURE 1 : PREDISPOSING CAUSES OF LAMENESS



MARELLAN VERDICT (P)

ID: JOBP048

BORN: 1/10/18 (23 MTHS)

RED

LOT 37



MARELLAN MR SLICK (P)
Sire: MARELLAN PROPHET (P)
 MARELLAN IDA 9442 (P)

MARELLAN INDESTRUCTABLE (P)
Dam: MARELLAN CHERIE 0275 (P)
 MARELLAN CHERIE 7183 (P)

Top 15% Birth Weight, Top 20% Calving Ease, Maternal Calving Ease & Docility.

Verdict is a long bodied Prophet son, with an ideal muscle expression. I like his soundness and mobility. A bull that will cover some country.

Weight	Fat	EMA	IMF	Fleck	Scrotal	Morph.	Mot.
						90%	75%

	CE	BW	WW	YW	Milk	MCE	MWWT	Stay	DOC	CWT	REA	FAT	MARB	YG	API\$
EPD	+10.4	+1.6	+50.2	+82.9	+26.6	+7.3	+51.7	+13.1	+13.1	-9.1	+0.08	-0.086	-0.09	-0.32	\$108.77
RANK %	20	15	65	50	60	20	70	50	20	70	55	35	85	50	45
Acc.	17%	21%	19%	20%	11%	11%	14%	10%	7%	26%	24%	11%	13%	18%	

Purchaser: Price: \$

MARELLAN VICEROY (P)

ID: JOBP063

BORN: 3/11/18 (22 MTHS)

RED

LOT 38



BYLAND MISSION (P) (IMP USA)
Sire: MARELLAN LAND LORD (P)
 MARELLAN CAMELOT 4248 (P)

THE GROVE D851 (P)
Dam: MARELLAN IDA 2012 (P)
 ROYALLA IDA 8364 (P)

Top 1% Milk & Stayability, Top 3% Maternal Weaning Weight, Top 10% API, Top 20% Yield Grade, Top 25% Maternal Calving Ease & Marbling.

A good Red, with a great Nuts. Joined to Red cows, Viceroy will produce 100% red progeny. Land Lord was a tremendous bull with longevity on both sides. Ida 2012 is also the dam of Sid.

Photo: Marellan Land Lord (P), Sire of Lots 34. 35. 38, 40, 41 & 42.

Weight	Fat	EMA	IMF	Fleck	Scrotal	Morph.	Mot.
						90%	80%

	CE	BW	WW	YW	Milk	MCE	MWWT	Stay	DOC	CWT	REA	FAT	MARB	YG	API\$
EPD	+6.6	+3.8	+52.0	+78.5	+39.1	+7.0	+65.1	+19.4	+11.2	-20.3	+0.00	-0.091	+0.04	-0.35	\$119.35
RANK %	70	60	60	65	1	25	3	1	45	100	85	60	25	20	10
Acc.	19%	22%	21%	20%	12%	14%	15%	13%	9%	20%	19%	16%	17%	16%	

Purchaser: Price: \$

MARELLAN VATUBUA (P)

ID: JOBP051

BORN: 24/10/18 (23 MTHS)

RED

LOT 39



DUNBEACON DAMPIER (P)

Sire: MARELLAN SUVA (P)

MARELLAN MOLLY 3195 (P)

MARELLAN NICODEMUS (P)

Dam: MARELLAN SUSAN 5113 (P)

MARELLAN SUSAN 0280 (P)

Top 25% Maternal Calving Ease, Top 30% Docility & Calving Ease.

A moderate framed bull with heaps of carcase shape and doing ability. Carcase and coverage. A grandson of the great Molly 3195. Vatubua is an ideal bull for producers targeting the domestic market or just wanting to finish progeny at a young age. He has all the indicators of being a high meat quality sire. Dam is a top young Nicodemus daughter.

Tested Homozygous Polled (PP)

Photo: Marellan Suva (P), Sire of Lots 20 & 39.

Weight	Fat	EMA	IMF	Fleck	Scrotal	Morph.	Mot.
						86%	75%

	CE	BW	WW	YW	Milk	MCE	MWWT	Stay	DOC	CWT	REA	FAT	MARB	YG	API\$
EPD	+9.2	+3.3	+46.1	+64.9	+28.6	+7.2	+51.7	+10.8	+12.3	-16.8	-0.01	-0.087	-0.09	-0.32	\$95.42
RANK %	30	50	85	95	40	25	70	80	30	95	85	40	85	45	90
Acc.	18%	19%	18%	18%	6%	9%	10%	11%	4%	18%	17%	13%	15%	14%	

Purchaser: Price: \$

MARELLAN VANCOUVER (P)

ID: JOBP080

BORN: 19/11/18 (22 MTHS)

RED

LOT 40



BYLAND MISSION (P) (IMP USA)

Sire: MARELLAN LAND LORD (P)

MARELLAN CAMELOT 4248 (P)

MARELLAN NICODEMUS (P)

Dam: MARELLAN FULLGLOSS 3006 (P)

MARELLAN FULLGLOSS 5283 (P)

Top 10% Stayability, Top 25% Milk & Top 30% Docility. A nice thick butted red, that will produce progeny that can be turned off at a young age. The type you would expect from combining Land Lord and Nicodemus. Fullgloss 3006 has had sons sell to \$12,000.

Tested Homozygous Polled (PP)

Weight	Fat	EMA	IMF	Fleck	Scrotal	Morph.	Mot.
						82%	85%

	CE	BW	WW	YW	Milk	MCE	MWWT	Stay	DOC	CWT	REA	FAT	MARB	YG	API\$
EPD	+4.7	+5.1	+46.8	+69.6	+30.3	+5.4	+53.7	+16.7	+12.5	-18.8	-0.12	-0.086	-0.04	-0.29	\$102.21
RANK %	95	90	80	90	25	55	55	10	30	100	100	35	65	80	70
Acc.	20%	23%	21%	21%	11%	13%	14%	13%	9%	27%	26%	15%	16%	20%	

Purchaser: Price: \$

MARELLAN VIP (P)

ID: JOBP088

BORN: 15/11/18 (22 MTHS)

RED

LOT 41



BYLAND MISSION (P) (IMP USA)
Sire: MARELLAN LAND LORD (P)
 MARELLAN CAMELOT 4248 (P)

MARELLAN PHIL KEARNS (P)
Dam: MARELLAN BRONWYN 4050 (P)
 MARELLAN BRONWYN 2248 (P)

Top 1% Stayability, Top 2% Milk, Top 20% Yield Grade, Top 30% Calving Ease, Birth Weight, Maternal Calving Ease & API.

VIP is a rich red with a great skin and smooth body. A carcass type bull that will breed versatile progeny. Dam is a tremendous cow, always fat and full of milk. 1/8 Brahman.

Tested Homozygous Polled (PP)

Weight	Fat	EMA	IMF	Fleck	Scrotal	Morph.	Mot.
						91%	85%

	CE	BW	WW	YW	Milk	MCE	MWWT	Stay	DOC	CWT	REA	FAT	MARB	YG	API\$
EPD	+9.2	+2.4	+39.1	+58.4	+35.8	+6.6	+55.4	+19.2	+10.7	-25.2	-0.07	-0.093	-0.09	-0.35	\$112.40
RANK %	30	30	100	100	2	30	40	1	55	100	95	70	85	20	30
Acc.	19%	21%	20%	20%	10%	12%	13%	12%	7%	27%	27%	16%	16%	21%	

Purchaser: Price: \$

MARELLAN VIC (P)

ID: JOBP141

BORN: 16/11/18 (22 MTHS)

RED

LOT 42



BYLAND MISSION (P) (IMP USA)
Sire: MARELLAN LAND LORD (P)
 MARELLAN CAMELOT 4248 (P)

BELMONT RED SIRE
Dam: MARELLAN BELMONT B75 (P)
 BELMONT RED DAM

Sire is: Top 1% Stayability, Top 2% Milk, Top 15% Marbling, Top 20% API & Top 25% Maternal Weaning Weight.

50% Shorthorn - 50% Belmont Red. A tremendous Shorthorn Composite bull the end the sale. A bull that supports the idea that the right Shorthorn bulls should be used extensively in the north. Vic has a great loin, rump and even fat distribution. PLEASE NOTE, Sire's EPD's.

Tested Homozygous Polled (PP)

Weight	Fat	EMA	IMF	Fleck	Scrotal	Morph.	Mot.
						83%	75%

	CE	BW	WW	YW	Milk	MCE	MWWT	Stay	DOC	CWT	REA	FAT	MARB	YG	API\$
EPD	+5.0	+4.9	+43.1	+65.0	+36.1	+6.1	+57.7	+20.7	+11.5	-23.6	-0.08	-0.089	+0.07	-0.33	\$115.59
RANK %	90	85	95	95	2	40	25	1	40	100	95	50	15	35	20
Acc.	53%	66%	60%	56%	25%	35%	37%	28%	30%	51%	48%	41%	43%	40%	

Purchaser: Price: \$

Selection - Structure & Lameness

◀ 30

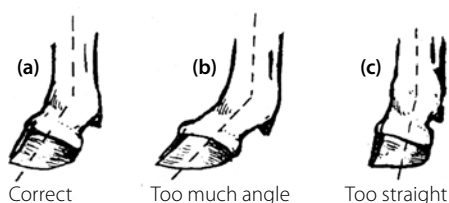
FOOT ANGLE AND DEPTH

Studies show that higher claw angles are positively correlated with increased herd life of bulls. The ideal angle is about 45-55 degrees. Deviation from this angle usually indicates poor leg structure (eg sickle or straight hocks and weak pasterns).

Defective feet generally worsen with age and problems are accentuated with poor feed management (eg overfeeding grain and insufficient minerals) and challenging environments (too abrasive or wet).

Heel depth is related to foot angle and deeper heels with sufficient angle reduce the incidence of lameness. Heel depth is also related to the slope of the pastern (Fig 4).

FIGURE 4 : FOOT & PASTER STRUCTURE



Long sloping claws or short block claws indicate too much or not enough pastern angle and can indicate structural faults of the pastern or the upper limbs (eg shoulder too straight). Incorrect angle of the pastern causes the hoof to wear abnormally which affects the mobility and performance of the animal. Shallow heels can lead to bruising and increase the chances of damage and infection.

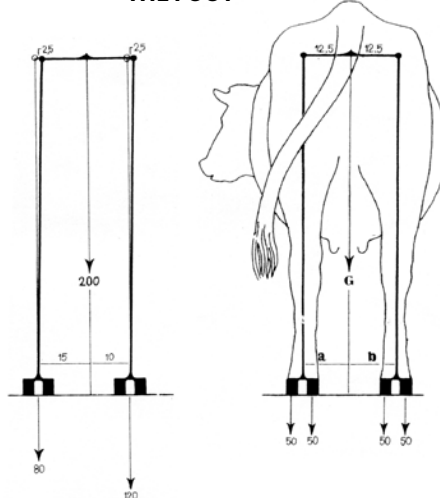
WEIGHT DISTRIBUTION

While standing the weight should be distributed between the front and hind legs.

“Most lameness (85 per cent) involves the hind feet”

A simple calculation will indicate how much weight is carried and clearly demonstrates why the foot can be easily stressed. With a 460 kg heifer, approximately 260 kg rest on the forelegs and 200 kg on the hind limbs (Fig 5). This means a weight of 100 kg per hind leg or 50 kg per claw (Fig 5). Note: this means that substantial pressure is placed on a few square centimetres of the corium under the pedal bone.

FIGURE 5 : WEIGHT DISTRIBUTION ON THE FOOT



With heavier animals (eg bulls) twice as much weight can be transferred to the foot and hooves (eg a mature bull can transfer 200 kg per hind leg and 100 kg per claw). When servicing a cow these weights are increased even further. Subsequently sensitivities in hind legs and feet reduces reproduction.

During locomotion, the centre of gravity (“G”) shifts from side to side (Fig 5) and the weight bearing by each hind claw varies with the movement.

“The majority of hind leg lameness involves the outside claw”

The outside claw of the hind legs bear the burden of the continuously changing weight load during locomotion. This may be the reason that these claws are more often damaged.

The outer hind claw is more heavily stressed which explains why the outside claw is larger than the inside claw and the heel is deeper and the sole thicker. Despite these adaptations the results of poor leg structure leads to an increased incidence of lameness.

The front feet bear weight load changes more evenly but when problems do occur the inside claw is usually the most affected.

DAMAGED FEET

The foot is protected by the hoof and its outer structures (Fig 2). The hooves are the first line of defence against foreign objects and infection. Foot damage can also be caused by internal factors such as poor feed management and disease (Fig 1).

LEG STRUCTURE

Abnormal structure of the hindquarter, shoulders and legs alters weight distribution, leading to stresses, inflammation and impaired function (ie walking and serving ability).

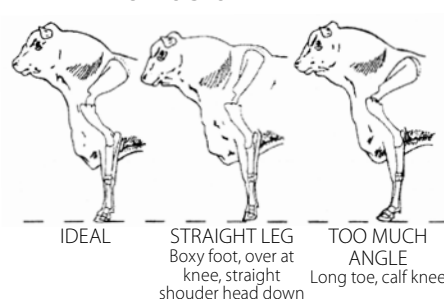
Structurally correct stock have a free moving gait (locomotion) with the hind feet stepping into the front footprints. Over or understepping of the hind feet is an indication of structural leg problems.

“Structural problems increase the incidence of lameness”

- Front End
- + Shoulders

The angle between the shoulder blade/shoulder/elbow should be 90-95° (Fig 6). Angles greater than this (eg straight shoulder) reduce shock absorption causing a short-choppy gait. With straight shoulder bulls the top of the shoulder blade is prominent above the backbone and the stock have high-open shoulder blades instead of smooth shoulders against the ribs.

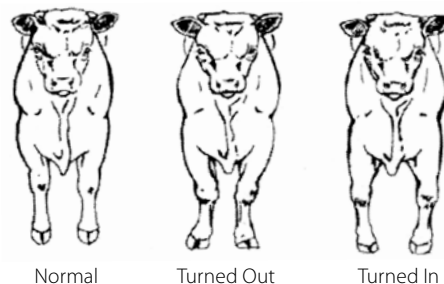
FIGURE 6 : FRONT LEG AND SHOULDER STRUCTURE



- + Front Legs

Fig 7 shows that the legs should be straight when viewed from the front.

FIGURE 7 : STRUCTURE OF THE FRONT LEGS



With turned in knees (knock kneed) stock may have overgrown outside claws which contributes to stress and lameness.

▶ 35

Selection - Structure & Lameness

◀ 34

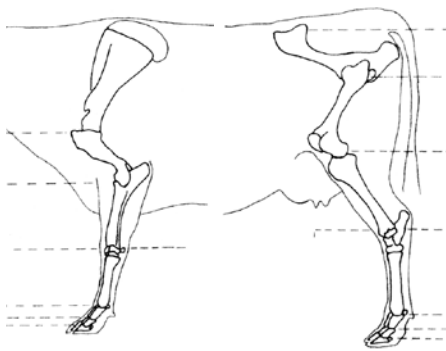
Turned in knees (bow legged) causes stock to roll their feet and these animals are prone to arthritis.

"Arthritis is caused by poor leg and joint structures"

- The Rear End
- + Rear Legs

The angle between the hip and the hock joint should be 90-95°. Angles greater than this (post legged) reduces walking and mating ability.

FIGURE 8 : SIDE VIEW OF FRONT AND HIND STRUCTURE

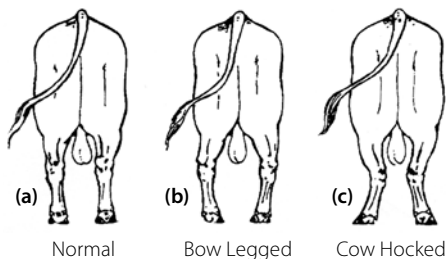


Note: Correct front and hind structure is all about the angles between the joints.

There is a strong relationship between rear leg structure and the soundness of the rear feet.

Fig 9 shows the degree of inward (cow hocked) or outward (bow legged) deviation from the hocks. Normal limbs (a) facilitate straight locomotion with the bigger outer claw carry the greater share of the weight load.

FIGURE 9 : REAR VIEW OF HIND LEG STRUCTURE



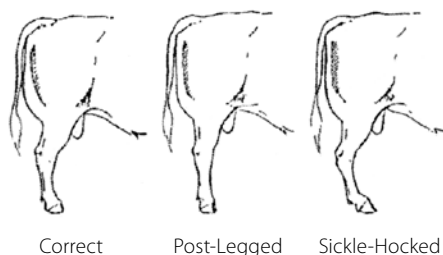
Viewed from the back, the leg should be vertical. Stock with their hooves rotated outwards (cow hocked) can have uneven growth of the outside claw. Stock that are wide at the hocks with their feet turned

inwards (bow legged) can suffer increased levels of stress and strain on the ligaments causing lameness and permanent damage.

"A high percentage of bulls are culled due to lost mobility"

Viewed from the side (Fig 10) straight hind legs (post legged) is a serious fault which leads to arthritis in the hocks, hips and joints.

FIGURE 10 : SIDE VIEW OF HIND LEG STRUCTURE



Straight legged bulls are often clumsy servers and can suffer high incidences of damage to the penis. Too much angle through the hocks (sickle hocked) whilst undesirable is not as serious a problem as post leggedness. Sickle hocked bulls are also clumsy servers particularly at the dismount.

Both post leggedness and sickle hocked conditions adversely affect the bulls servicing capacity and lead to an earlier 'breakdown' in the life of the bull.

NUTRITION

Feed management will be discussed in a later article titled "Acidosis and Laminitis". However, incorrect energy and protein balances and mineral/vitamin deficiencies play a clear role in lameness.

All rations should be balanced for calcium, phosphorous for good bone health. Other helpful minerals for foot health include zinc, copper, molybdenum and manganese.

Rations need to include the correct levels of fibre and the fibre should have the right physical form and particle size to increase chewing which produces saliva (buffer) which aids digestion.

Depending on the grain source, the non structural carbohydrates should not exceed 40 per cent of the ration. Feeding incorrectly processed grains with inadequate levels of

fibre causes metabolic disorders and lameness.

"Arthritis is accentuated when young bulls are fed high grain rations"

Overfeeding protein can cause the abnormal growth of the hoof. Conversely defective diets produce poor wall growth. Intensively feeding increases body weight subjecting joints, legs and feet to greater weight loads and stresses.

DISEASE

The most common bacterial cause of lameness is foot rot. Foot rot is characterised by a necrotic lesion in between the claws (interdigital) which may extend into the soft tissues of the foot causing swelling and lameness. If not treated promptly and correctly, foot rot (and other foot diseases) can pose grave consequences for the infected animal.

"Mortalities may be low but mobility and economic loss is high"

Preventative measures include foot bathing (eg copper sulphate, Epsom salts) and treatment with injectable antibiotics as prescribed your veterinarian.

Stock with poor leg/feet structure are more prone to foot injuries and infection.

ENVIRONMENT

The importance of environment should not be overlooked particularly for sale bulls held in small enclosures.

Foot lesions vary in type and severity depending on the climate and the abrasiveness of the surfaces the animal walks on.

Hot, dry climates harden the hoof which may increase the resistance to trauma but causes the hoof to be more brittle. On the other hand excessively wet conditions soften the hoof and these conditions favour invasion by bacteria and foreign objects.

SELECTION OUTCOMES

Lameness and poor performance due to structural faults is considered a major herd health problem which reduces herd performance. Only reproduction is more important reason for selective culling. Furthermore, lameness and faulty leg/feet

▶ 36

Selection - Structure & Lameness

35

structure can accentuate reproduction problems.

Factors such as disease, unsuitable environments and poor feed management can play an interactive role in the incidence of lameness.

Genetic factors have a significant role in lameness. Whilst heritabilities are low (0.08-0.16) specific problems can have medium (0.30) heritabilities.

It is noted that several conformation traits have a strong correlation to lameness (Table 1).

TABLE 1 : GENETIC CORRELATION BETWEEN LAMENESS AND FOOT AND LEG STRUCTURE (SOURCE: ATKIN ET AL)

	Heritability	Genetic Correlation with		
		Feet / Legs	Foot Angle	Rear Legs
Lameness	0.10	+0.46	+0.59	+0.65

Heritabilities and genetic correlations between feet and leg conformation and herd life are shown in Table 2.

BOTTOM LINE

The genetic (inherited) component of minimising lameness can be significantly improved by selecting for desirable foot and leg conformation traits.

Breeders are subsequently urged to take special note of the leg and foot structure through visual assessment and performance data if available.

Ongoing, intense selection for structural correctness will substantially reduce the incidences of lameness and improve the overall performance of the herd.



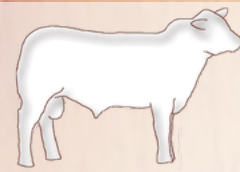
TABLE 2 : FOOT AND LEG HERITABILITIES AND GENETIC CORRELATIONS WITH HERD LIFE (SOURCE: ATKINS ET AL)

Trait	Heritability	Genetic Correlation with Herd Life
Feet & Legs	0.21	+0.52
Foot Angle	0.13	+0.41
Heel Depth	0.10	+0.44
Bone Quality	0.28	+0.45
Rear Legs - side	0.26	-

Acknowledgement: A special thanks to Alex Ashwood and the Australian Brahman Breeders Association for allowing us to print this article.

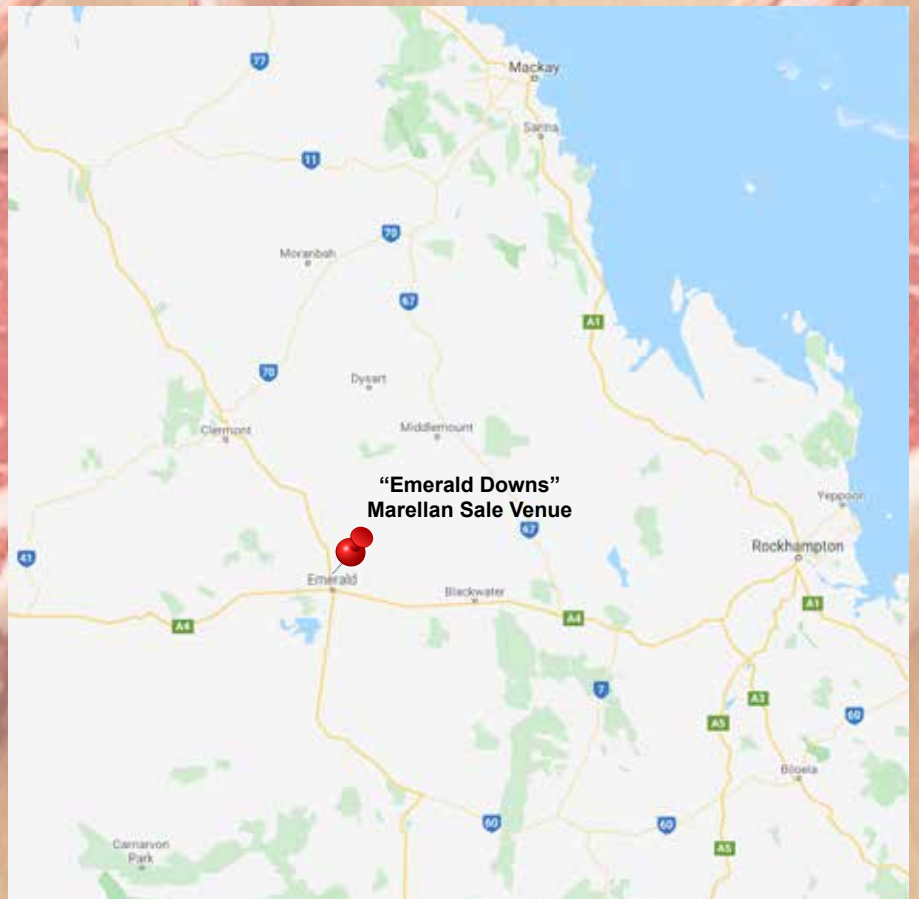
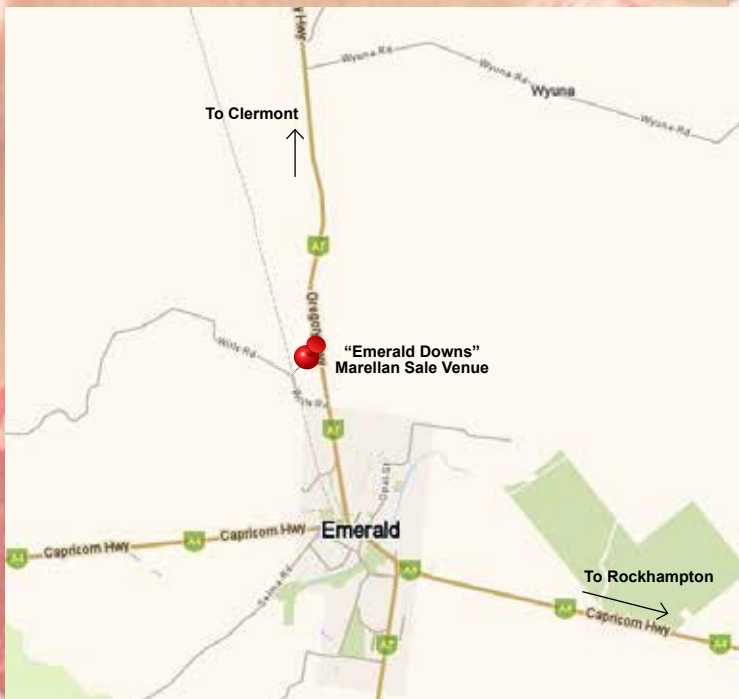


“Nunya” Yamala, February 2020



marellan
shorthorns

Bred for Bos Indicus Cows!



Marcellan Shorthorns

"Bred for Boos Indicus Cows" Bull Sale

Monday 28th Sept 2020 "Emerald Downs" Emerald
ONLINE & ON PROPERTY

LOT 17

LOT 21

LOT 20

LOT 19