



**Survivability. Thriveability. Profitability.**

**Marellan Shorthorns**

*"Bred for Bos Indicus Cows" Bull Sale*

**Tuesday 24th Sept 2019**

**ON PROPERTY** "Emerald Downs" Emerald

Dear Beef Producers,

We welcome you to our **"Bred for Bos Indicus Cows"** On-Property Bull Sale at "Emerald Downs", just north of Emerald on the Gregory Highway. The sale commences at 12 MIDDAY. Inspection is from 8am on Sale Day, or any other time by appointment.

It has been very pleasing to receive so many good reports of the progeny of our bulls over Bos Indicus Cows. It's great to see that your Bos Indicus Cows and our Shorthorn bulls are forming a profitable and potent combination. We continue to strive for **Industry Leading Selection Pressure**, to instil in our herd more genetic gain and northern industry relevance. Increased Global demand for beef, growth in Organic and grass-fed labels, and a continued focus on producing a high-quality product presents tremendous opportunities for our industry. Opportunities that, in our opinion, could be grasped by combining Marellan Shorthorn Bulls with your Bos Indicus cows.

2019 has seen our herd step into the Genomics world, undergoing complete herd 50K DNA profiling. This combined with **Shorthorns Beef's** pioneering move to the IGS performance recording system has meant that for the **first time ever**, Genomic enhanced breeding values will be available at a Shorthorn Bull Sale in Australia. Please see page 27 for more info on ShorGene and IGS.

**About the Bulls:** On offer will be 40 Shorthorn Bulls. All these bulls have been blooded and have been fully vaccinated with 3-day, Vibrio, Pestiguard and 7 in 1. The bulls have been **Morphology Semen Tested** and up to date weighs and scan will be available before the sale. We are very pleased with this year's bulls. These bulls represent the very best in Shorthorn genetics, which have been bred for generations to prosper in the Queensland environment. **PLEASE NOTE** that this year's bulls have had **ABSOLUTELY NO GRAIN ALL THEIR LIVES**, they are genuinely grass-fed paddock bulls. We have adopted a **'NO GRAIN-NOT EVER'** policy because we think it's in the best **long-term** interests of both our business and yours. This inevitably means that the bulls are not as visually as impressive (lighter weights and lower scans) to the eye, as you may see at other sales. We ask both returning clients and new clients to **lower your sale day expectations but increase your long-term expectations** of the contribution that these Marellan Shorthorn bulls can make to your herd.

We invite you to come along on Tuesday 24<sup>th</sup> September and Judge for Yourself.

Yours sincerely,

Lincoln & Lisa Job



Front Cover: Droughtmaster Cows with Marellan Shorthorn sired calves, Appleton Cattle Co., "Craven" Alpha.



**Marellan Shorthorns**

*"Bred for Bos Indicus Cows" Bull Sale*

Tuesday 24th Sept 2019 On Property "Emerald Downs" Emerald

**Tuesday 24th September 2019**

12 noon

On property "Emerald Downs", Emerald

**PLEASE NOTE - NEW SALE STARTING TIME**

***Inspection from 8am on sale day***

---

**40 Shorthorn Bulls**

---

Selling Agents:



**Outside Agents Rebate:**

A 5% rebate will be offered to outside agents who;

1. Introduce their clients more than 24 hours before the sale (to vendors or selling agents)
2. Attend the sale with them (or purchase on their behalf) and settle within 7 days.
3. Agents may ONLY introduce clients under the specific instruction of their clients.
4. Sale day buyers registration forms must be consistent with introductions.

**LINCOLN & LISA JOB**

**(M) 0404 083 438**

[www.marellan.com.au](http://www.marellan.com.au) | [lincolnandlisa@marellan.com.au](mailto:lincolnandlisa@marellan.com.au)

If you are unable to reach Lincoln on sale day or before,  
please feel free to call Lisa's mobile on 0411 311 323



**marellan**  
**shorthorns**

**Bred for Bos Indicus Cows!**

# Sale Information

**Inspection:** Inspection will be from 8am on sale day or any other time by appointment.

**Accommodation:** Emerald has numerous accommodation options.

**Airport:** “Emerald Downs” is situated only 10km from the Emerald Airport. Please call Lincoln (0404 08 34 38) or Lisa (0411 311 323) if would like us to arrange for you to be picked up from the airport.

**Breeding Soundness:** All bulls will be Semen Morphology tested and examined for reproductive and structural soundness by Dr Ced Wise, Adam Wise and Rocky Repro.

**Supplementary Sheet:** Supplementary Sheets will be available in the week leading up to the Sale. Bulls will be weighed, scanned for EMA, IMF, Marble Fleck and Fat cover. Scrotal measurements have been done by Dr Ced Wise & Adam Wise with the ‘reliable’ tension measurer, in accordance with the Australian Cattle Veterinarians.

**Delivery:** We will endeavour to help co-ordinate efficient delivery of the bulls where required. Trucks are welcome on sale day. All bulls sold outside of the ticks will be delivered and presented clean to the clearance dip at the vendor’s expense.

**Health:** All bulls have been vaccinated with 7 in 1, Pestiguard, 3-day and Vibrio. All bulls have been blooded with 3-germ. The Central Highlands is ticky country; consequently, all bulls have been exposed to ticks on numerous occasions and will need to be cleared if they are sold to a tick free area.

**Delayed Payment:** Delayed payment may be available to some producers. Please speak to Lincoln prior to sale day.

**Mobile Phones:** “Emerald Downs” has very good mobile phone coverage.

**Directions:** “Emerald Downs” is located just north of Emerald on the Gregory Highway. Please see inside the back cover for a map.

**Sale Bulls:** Sale bulls have been prepared for their working lives, absolutely no grain, silage or pellets. Consequently, they will not have the finish that you may see at other sales. We are determined to ensure that our bulls can function and thrive in Central, North and Western Queensland.

**Semen Rights:** We have collected semen from a limited number of sale bulls. **We retain 50% Semen rights on ALL LOTS.** It is most likely that this will be absolutely irrelevant for virtually all buyers but please speak to Lincoln if you require any clarification.

**GST:** 10% GST will be added to the knock down price.

## IGS EPD PERCENTILES - 2017 BORN ANIMALS

|                | CE    | WW   | YW  | ADG  | EBE   | KIM | MM  | SE    | CG    | SC    | KAR   | HA     | REA    |
|----------------|-------|------|-----|------|-------|-----|-----|-------|-------|-------|-------|--------|--------|
| <b>Top 1%</b>  | +15.7 | -2.5 | +78 | +116 | +11.2 | +27 | +60 | +0.16 | -0.41 | +12.7 | +0.33 | -0.075 | +\$130 |
| <b>Top 5%</b>  | +13.1 | -0.8 | +73 | +108 | +9.6  | +24 | +56 | +0.05 | -0.39 | +4.3  | +0.24 | -0.085 | +\$123 |
| <b>Top 10%</b> | +11.6 | 0.0  | +70 | +104 | +8.8  | +23 | +54 | +0.02 | -0.38 | +0.8  | +0.20 | -0.089 | +\$119 |
| <b>Top 20%</b> | +10.2 | +0.9 | +67 | +99  | +7.7  | +22 | +53 | -0.01 | -0.36 | -2.9  | +0.15 | -0.093 | +\$114 |
| <b>Top 25%</b> | +9.7  | +1.2 | +65 | +97  | +7.4  | +21 | +52 | -0.03 | -0.35 | -4.2  | +0.14 | -0.095 | +\$113 |
| <b>Top 40%</b> | +8.6  | 0.0  | +62 | +92  | +6.5  | +20 | +50 | -0.06 | -0.34 | -7.4  | +0.09 | -0.097 | +\$109 |
| <b>Top 50%</b> | +8.0  | +2.4 | +61 | +89  | +6.0  | +19 | +49 | -0.07 | -0.33 | -9.2  | +0.07 | -0.099 | +\$106 |

See Page 27 for more information on IGS





## SPECIALISING IN MARKETING

- Livestock Sales
- Rural Property Sales
- Residential Sales
- Clearing Sales &
- Property Management

Jake Passfield 0488 588 044

Tony Hoch 0448 831 553

Clermont Office 0749 831 555



Livestock & Property

[www.hochandwilkinson.com](http://www.hochandwilkinson.com)

# NO GRAIN NOT EVER

# MARELLAN UNIVERSAL (P)

ID: JOBN174

BORN: 20/7/17 (26 MTHS)

ROAN

## LOT 1



THE GROVE OSCAR A748 (P)

**Sire: WEEBOLLABOLLA HIGGINS H82(P)**

WEEBOLLABOLLA JILLAROO Z49 (P)

GOBOTHERY SIRE

**Dam: GOBOTHERY F10 (H) ROAN**

GOBOTHERY COW

Top 2% Marble Score, Carcase Weight, Rib Eye Area, Fat.  
Top 3% Maternal Weaning Weight, Top 8% All Purpose Index, Top 8% Milk, Top 15% Birth Weight, Top 24% Calving Ease

Universal takes the eye of most who see him, due to his structural correctness, and soft easy doing muscle and skin type. Will breed great F1 Bos Indicus cross females.

| Weight | Fat | EMA | IMF | Fleck | Scrotal | Morph. | Mot. |
|--------|-----|-----|-----|-------|---------|--------|------|
|        |     |     |     |       |         | 83%    | 85%  |

|            | CE    | BW   | WW  | YW  | CE-Mat. | MILK | Mat. WW | Marble Sc. | Yield Grd | Carc. Wt. | R.E.A. | FAT    | API \$ |
|------------|-------|------|-----|-----|---------|------|---------|------------|-----------|-----------|--------|--------|--------|
| EPD        | +10.1 | +0.1 | +52 | +80 | +5.9    | +25  | +67     | +0.36      | -0.048    | +34.2     | +0.5   | +0.002 | +\$131 |
| RANK (Top) | 24%   | 15%  | 84% | 73% | 52%     | 8%   | 3%      | 2%         | 98%       | 2%        | 2%     | 2%     | 5%     |
| Acc.       | 5%    | 6%   | 7%  | 7%  | 2%      | 7%   | 6%      | 6%         | 6%        | 7%        | 7%     | 6%     |        |

Purchaser: ..... Price: \$ .....

# MARELLAN UNIFORM (H)

ID: JOBN126

BORN: 12/7/17 (26 MTHS)

ROAN

## LOT 2



WEEBOLLABOLLA BOSWORTH B90 (P)

**Sire: MARELLAN NICODEMUS (P) ROAN**

MARELLAN ISOBEL 7152 (P)

MARRINGTON MICHELAGO Z72 (P)

**Dam: WARRABERRY WATERMAID 1ST (P)**

BROOME DAY DREAM WATERMAID T30 (P)

Top 4% Fat, Top 11% Milk

Horned. A top Nicodemus son, great carcase and easy of movement. He will breed top weaners, feeders, bullocks or F1 females.

| Weight | Fat | EMA | IMF | Fleck | Scrotal | Morph. | Mot. |
|--------|-----|-----|-----|-------|---------|--------|------|
|        |     |     |     |       |         | 97%    | 90%  |

|            | CE   | BW   | WW  | YW  | CE-Mat. | MILK | Mat. WW | Marble Sc. | Yield Grd | Carc. Wt. | R.E.A. | FAT    | API \$ |
|------------|------|------|-----|-----|---------|------|---------|------------|-----------|-----------|--------|--------|--------|
| EPD        | +6.1 | +4.0 | +54 | +76 | +6.1    | +24  | +50     | -0.12      | -0.217    | -25.4     | -0.29  | -0.069 | +\$90  |
| RANK (Top) | 79%  | 83%  | 79% | 83% | 48%     | 11%  | 41%     | 77%        | 96%       | 96%       | 98%    | 4%     | 93%    |
| Acc.       | 34%  | 41%  | 40% | 40% | 17%     | 34%  | 35%     | 32%        | 28%       | 38%       | 30%    | 31%    |        |

Purchaser: ..... Price: \$ .....

# MARELLAN UNGUS (H)

ID: JOBN137

BORN: 16/7/17 (26 MTHS)

ROAN

## LOT 3



RONELLE PARK EAGLE (P)

**Sire: RONELLE PARK HURRICANE H242 (P)**

NARRALDA ZENA C080 (P) (A1)

ROYALLA NEXT OF KIN F261 (P)

**Dam: WARRABERRY SAIGE K67 (P) ROAN**

WARRABERRY SAIGE (P)

Top 9% Yeild Grade, Top 18% Calving Ease, Top 20% Birth Weight

I like the smoothness of this bull. A growthy bull with nice even fat coverage and a good carcass.

| Weight | Fat | EMA | IMF | Fleck | Scrotal | Morph. | Mot. |
|--------|-----|-----|-----|-------|---------|--------|------|
|        |     |     |     |       |         | 88%    | 90%  |

|            | CE    | BW   | WW  | YW  | CE-Mat. | MLK | Mat. WW | Marble Sc. | Yield Grd | Carc. Wt. | REA   | FAT    | API \$ |
|------------|-------|------|-----|-----|---------|-----|---------|------------|-----------|-----------|-------|--------|--------|
| EPD        | +10.8 | +0.7 | +57 | +83 | +6.6    | +21 | +49     | -0.24      | -0.391    | -12.8     | +0.02 | -0.118 | +\$110 |
| RANK (Top) | 18%   | 20%  | 66% | 68% | 39%     | 31% | 51%     | 96%        | 9%        | 68%       | 66%   | 99%    | 36%    |
| Acc.       | 30%   | 36%  | 36% | 36% | 11%     | 32% | 32%     | 28%        | 28%       | 35%       | 33%   | 28%    |        |

Purchaser: ..... Price: \$ .....

# MARELLAN URANA (P)

ID: JOBN145 (Herd Bull)

BORN: 28/7/17 (26 MTHS)

ROAN

## LOT 4



MARELLAN BLOOD

**Sire: YOOROOGA SIRE**

YOOROOGA COW

YOOROOGA SIRE

**Dam: MERENDEE 044**

YOOROOGA COW

A long-bodied bull that likes to walk. Thick topped and wide rump. He will breed top progeny over higher content females.

| Weight | Fat | EMA | IMF | Fleck | Scrotal | Morph. | Mot. |
|--------|-----|-----|-----|-------|---------|--------|------|
|        |     |     |     |       |         | 80%    | 85%  |

Purchaser: ..... Price: \$ .....

# SHORTHORNS IN THE TICKS



# Industry Leading Selection Pressure – to Increase your bottom line \$

Our breeding philosophy is pretty simple, start with the best genetics possible (& keep adding to that group), chuck them all in at the deep end and see who learns to swim...quickly. This approach is ultimately about your herd as much as ours. Because if our bulls don't excel in your herd, we don't have a business. Feedback is always welcome, both positive and negative. As this feedback helps to refine our breeding program.



## 'No Grain-Not Ever'

Marellan Shorthorns exists for the sustainability and profitability of our herd and our client's herds. Our 2019 sale bulls have had absolutely no grain all their lives. They have never received silage or any pellets. **No Grain – Not Ever**; it proves our bulls can handle the environment. **No Grain – Not Ever**; It ensures the bulls are not carrying excess weight, they don't need to be let down; our bulls are for breeding not for looking prime on sale day. We believe that not pushing a bull's skeletal structure to the maximum is best for longevity. **No Grain – Not Ever**; it's part of our wider selection pressure.

## Paternal (Bull) Selection Pressure

Our Paternal (Bull) Selection pressure doesn't end with **No Grain – Not Ever**. Once weaned we deliberately ensure that our bulls don't get a silver spoon put in their mouths. We ensure that that are only grazed on low quality feed and given minimum animal health treatments. This most definitely effects their growth, development and heavy they are on sale day, but this selection pressure means that only those with the best survivability prosper, making the culling process quite easy. The bulls are then finished for sale day on grazing crop. Please don't expect to see fat, prime, feedlot finished bulls on sale day. The feedlot is the finishing system of many, but grass is production system of virtually all. Our bulls are all about production, so our Paternal Selection Pressure reflects this. But don't worry, their progeny will be great feedlot performers, a recent group of mixed sex feedlot cattle (mainly cull cows) averaged 3.41KG per day. Our bulls are light but have been tested and verified with extreme selection pressure, for the long-term benefit of your herd and ours. If you can source British Bred Bulls of high quality anywhere in the country that have had that much selection pressure; we suggest you do!



Lots 38, 34 & 37



Marellan Shorthorn Cows at “Nunya” Yamala

## Shorthorns in the Ticks

We are determined to produce a tropically adapted Shorthorn herd in the ticks. We want our herd to survive and thrive in an environment that is similar to our client's herds. We use environmental selection pressure to make our cattle even more industry relevant. There are very few British Bred Bull breeding herds in the country that are in the ticks. Breeding a tropically adapted Shorthorn herd is not easy, but that's our aim. To help achieve this, environmental selection pressure is at the heart of our breeding philosophy. To have Shorthorns in the ticks we apply **Unique Selection Pressure** within our herd. We have and are monitoring the tick levels on different individuals and lines within our herd to identify and then propagate those that have the lowest tick burden and highest industry relevance for the north. Our aim isn't to have Shorthorn cows that need constant intervention, but to have a herd of Shorthorn Females that get no more care and attention than the majority of Bos Indicus herds. As stud breeders we believe that our selection pressure must be harder than our clients, to help ensure that our bulls provide genetic gain for their new owners.

## Maternal Selection Pressure – Focussed on Fertility

Selection Pressure is at the absolute core of our breeding philosophy. When immense selection pressure is combined with the pursuit of elite genetics, it becomes the mechanism by which the value of a herd is ultimately determined. It is only those that remain after a heavy selection pressure that we want to breed from; the cream rises to the top.

But our selection pressure doesn't stop with ticks, fly and heat. Fertility is at the core of our selection pressure. Heifers are only joined for 2 cycles and we demand that our cows calve each year, and rebreed whilst lactating, ensure a calving interval that is close to or less than 365 days. Females that don't meet our high standards are culled, to ensure that inferior and uneconomical traits are not spread into our client's herds. We are finding that our ideal females are ones with constitution and rumen capacity, that maintain their body condition throughout lactation and along the roller-coaster that is Central Queensland seasons. Fertility is also our focus with our bulls. Our bulls are semen motility & morphology tested. All scrotal measurements are undertaken with the 'Reliable' tension measurer in accordance with the Australian Cattle Vets.





Location: 9 Turrama Road, Clermont QLD  
Phone: 07 4983 1688 Fax: 07 4983 1779  
Website: [www.breckoncattleequipment.com.au](http://www.breckoncattleequipment.com.au)



# Leading Manufacturers of

~ Manual, Hydraulic and Pneumatic Crushes & Branding Cradles ~

~ Feeding Equipment ~ Roller Mills ~



**Breckon Cattle Equipment  
"BCE" proudly owned and  
manufactured by Gregory  
Fabrications in Clermont QLD.  
Contact them for all you cattle  
handling equipment.**





# MARELLAN URO (P) (ET)

ID: JOBN133

BORN: 30/7/17 (25 MTHS)

ROAN

## LOT 5



RONELLE PARK EAGLE (P)

**Sire: RONELLE PARK HURRICANE H242 (P)**

NARRALDA ZENA C080 (P)

LACHLAN C335 (P)

**Dam: MARELLAN CAMELOT 0078 (P) RED**

MARELLAN CAMELOT 15214 (P)

Top 6% Yeild Grade, Top 7% Rib Eye Area

Lots of carcase shape here, thick rump, wide top. A bull that has a bit more yield and a little less fat. Camelot 0078 is a magnificent donor cow. 'Uro' is Fijian for 'King'. Please note, Uro carries more ticks than most of the bulls. Tested Homozygous polled.

| Weight | Fat | EMA | IMF | Fleck | Scrotal | Morph. | Mot. |
|--------|-----|-----|-----|-------|---------|--------|------|
|        |     |     |     |       |         | 81%    | 85%  |

|            | CE   | BW   | WW  | YW  | CE-Mat. | MILK | Mat. WW | Marble Sc. | Yield Grd | Carc. Wt. | R.E.A | FAT    | API \$ |
|------------|------|------|-----|-----|---------|------|---------|------------|-----------|-----------|-------|--------|--------|
| EPD        | +6.1 | +1.2 | +58 | +81 | +5.1    | +21  | +50     | -0.17      | -0.409    | -7.8      | +0.28 | -0.101 | +\$111 |
| RANK (Top) | 79%  | 27%  | 61% | 73% | 66%     | 32%  | 46%     | 89%        | 6%        | 43%       | 7%    | 64%    | 32%    |
| Acc.       | 31%  | 42%  | 41% | 41% | 17%     | 36%  | 37%     | 33%        | 28%       | 34%       | 35%   | 29%    |        |

Purchaser: ..... Price: \$ .....

# MARELLAN UTOPIA (P)

ID: JOBN149

BORN: 2/8/17 (25 MTHS)

ROAN

## LOT 6



THE GROVE D851 (P)

**Sire: ROYALLA PROVENENCE H352 (P) RED**

MARELLAN BELINDA J6032 (P)

YOOROOGA BRED

**Dam: MARELLAN MERENDÉE 2444 (P) (SFA)**

YOOROOGA BRED

Top 3% Rib Eye Area, Top 4% Fat & Marble Score. Top 5% All Purpose Index. Top 6% Milk. Top 11% Carcase Weight. Top 13% Calving Ease, Top 17% Calving Ease - Maternal, Top 18% Maternal Weaning Weight.

Utopia is an outstanding prospect. A super soggy bull, lots of carcase shape and doing ability. Not a huge framed bull, but he was always one of the heaviest bulls. Rarely have we seen Utopia's ability to remain in forward body condition no matter what the prevailing seasonal circumstances. We will use this bull in our AI & ET programs. Tested Homozygous Polled.

| Weight | Fat | EMA | IMF | Fleck | Scrotal | Morph. | Mot. |
|--------|-----|-----|-----|-------|---------|--------|------|
|        |     |     |     |       |         | 93%    | 90%  |

|            | CE  | BW   | WW  | YW  | CE-Mat. | MILK | Mat. WW | Marble Sc. | Yield Grd | Carc. Wt. | R.E.A | FAT    | API \$ |
|------------|-----|------|-----|-----|---------|------|---------|------------|-----------|-----------|-------|--------|--------|
| EPD        | +12 | +1.3 | +56 | +86 | +8.4    | +26  | +54     | +0.19      | -0.258    | +3.1      | +0.41 | -0.042 | +\$131 |
| RANK (Top) | 13% | 29%  | 70% | 59% | 17%     | 6%   | 18%     | 4%         | 92%       | 11%       | 3%    | 4%     | 5%     |
| Acc.       | 26% | 32%  | 32% | 32% | 11%     | 31%  | 31%     | 28%        | 24%       | 29%       | 27%   | 27%    |        |

Purchaser: ..... Price: \$ .....

# MARELLAN UNDERWOOD (H)

ID: JOBN130

BORN: 17/7/17 (26 MTHS)

ROAN

## LOT 7



RONELLE PARK EAGLE (P)

**Sire: RONELLE PARK HURRICANE H242 (P)**

NARRALDA ZENA C080 (P)

ROYALLA NEXT OF KIN F261 (P)

**Dam: WARRABERRY MEME J44 (P) RLW**

WARRABERRY MEME F71 (P)

Top 12% Milk, Top 16% Carcase Weight, Top 17% Maternal Weaning Weight

A long bodied bull with good performance. A big EMA bull on a big frame. A bullock breeders bull.

| Weight | Fat | EMA | IMF | Fleck | Scrotal | Morph. | Mot. |
|--------|-----|-----|-----|-------|---------|--------|------|
|        |     |     |     |       |         | 94%    | 85%  |

|                   | CE         | BW         | WW         | YW         | CE-Mat.    | MILK       | Mat. WW    | Marble Sc. | Yield Grd  | Carc. Wt.  | REA        | FAT        | API \$     |
|-------------------|------------|------------|------------|------------|------------|------------|------------|------------|------------|------------|------------|------------|------------|
| <b>RANK (Top)</b> | <b>49%</b> | <b>50%</b> | <b>47%</b> | <b>55%</b> | <b>52%</b> | <b>12%</b> | <b>17%</b> | <b>82%</b> | <b>82%</b> | <b>16%</b> | <b>59%</b> | <b>73%</b> | <b>51%</b> |
| <i>Acc</i>        | 32%        | 41%        | 40%        | 40%        | 15%        | 35%        | 35%        | 30%        | 29%        | 38%        | 34%        | 28%        |            |

Purchaser: ..... Price: \$ .....

# MARELLAN UNEARTH (H)

ID: JOBN170

BORN: 12/7/17 (26 MTHS)

ROAN

## LOT 8



THE GROVE OSCAR A748 (P)

**Sire: WEEBOLLABOLLA HIGGINS H82 (P)**

WEEBOLLABOLLA JILLAROO Z49 (P)

GOBOTHERY SIRE

**Dam: GOBOTHERY F6**

GOBOTHERY COW

Top 1% Carcase Weight, Rib Eye Area & Fat. Top 2% Marble Score, Top 4% All Purpose Index, Top 10% Calving Ease, Top 13% Birth Weight, Top 20% Calving Ease - Maternal, Top 23% Milk

Another of super soft bull, to breed those quick finishing bullocks that look great and those good F1 Bos Indicus X females.

| Weight | Fat | EMA | IMF | Fleck | Scrotal | Morph. | Mot. |
|--------|-----|-----|-----|-------|---------|--------|------|
|        |     |     |     |       |         | 84%    | 80%  |

|                   | CE           | BW          | WW         | YW         | CE-Mat.     | MILK       | Mat. WW    | Marble Sc.   | Yield Grd     | Carc. Wt.  | R.E.A.       | FAT           | API \$        |
|-------------------|--------------|-------------|------------|------------|-------------|------------|------------|--------------|---------------|------------|--------------|---------------|---------------|
| <b>EPD</b>        | <b>+12.7</b> | <b>-0.1</b> | <b>+55</b> | <b>+86</b> | <b>+8.0</b> | <b>+22</b> | <b>+49</b> | <b>+0.30</b> | <b>+0.045</b> | <b>+42</b> | <b>+0.55</b> | <b>+0.033</b> | <b>+\$136</b> |
| <b>RANK (Top)</b> | <b>10%</b>   | <b>13%</b>  | <b>76%</b> | <b>59%</b> | <b>20%</b>  | <b>23%</b> | <b>54%</b> | <b>2%</b>    | <b>99%</b>    | <b>1%</b>  | <b>1%</b>    | <b>1%</b>     | <b>4%</b>     |
| <i>Acc</i>        | 23%          | 30%         | 30%        | 30%        | 6%          | 30%        | 29%        | 28%          | 27%           | 33%        | 33%          | 26%           |               |

Purchaser: ..... Price: \$ .....



# MARELLAN UNABASHED (P)

ID: JOBN167

BORN: 12/8/17 (25 MTHS)

ROAN

## LOT 9



WEEBOLLABOLLA FINLAY F120 (S)

**Sire: WEEBOLLABOLLA K50 (H) (R&W)**

WEEBOLLABOLLA CLARE C62 (P)

GOBOTHERY SIRE

**Dam: GOBOTHERY F3**

GOBOTHERY COW

Top 1% Carcase Weight & Fat. Top 2% Rib Eye Area, Top 3% Marble Score, Top 8% Birth Weight, Top 14% All Purpose Index

A growthy roan with doing ability. He has good carcase and lots of mobility.

| Weight | Fat | EMA | IMF | Fleck | Scrotal | Morph. | Mot. |
|--------|-----|-----|-----|-------|---------|--------|------|
|        |     |     |     |       |         | 86%    | 80%  |

|            | CE   | BW   | WW  | YW  | CE-Mat. | MILK | Mat. WW | Marble Sc. | Yield Grd | Carc. Wt. | REA   | FAT    | API \$ |
|------------|------|------|-----|-----|---------|------|---------|------------|-----------|-----------|-------|--------|--------|
| EPD        | +7.9 | -1.1 | +50 | +76 | +4.7    | +20  | +44     | +0.25      | +0.11     | +39.3     | +0.49 | +0.057 | +\$119 |
| RANK (Top) | 52%  | 8%   | 89% | 83% | 73%     | 43%  | 83%     | 3%         | 99%       | 1%        | 2%    | 1%     | 14%    |
| Acc.       | 25%  | 29%  | 30% | 30% | 8%      | 29%  | 30%     | 29%        | 26%       | 32%       | 31%   | 26%    |        |

Purchaser: ..... Price: \$ .....

# MARELLAN UQ (P)

ID: JOBN176

BORN: 8/7/17 (26 MTHS)

ROAN

## LOT 10



THE GROVE OSCAR A748 (P)

**Sire: WEEBOLLABOLLA G138 (P) (AI) (ET)**

WEEBOLLABOLLA VIGILANCE V113 (P)

GOBOTHERY SIRE

**Dam: GOBOTHERY F12**

GOBOTHERY COW

Top 2% Marble Score, Carcase Weight, Rib Eye Area & Fat. Top 4% Maternal Weaning Weight, Top 5% All Purpose Index, Top 16% Birth Weight, Top 22% Calving Ease

Bigger frame performance bull. He'll breed those big roan bullocks that weigh well.

| Weight | Fat | EMA | IMF | Fleck | Scrotal | Morph. | Mot. |
|--------|-----|-----|-----|-------|---------|--------|------|
|        |     |     |     |       |         | 83%    | 70%  |

|            | CE    | BW   | WW  | YW  | CE-Mat. | MILK | Mat. WW | Marble Sc. | Yield Grd | Carc. Wt. | R.E.A. | FAT    | API \$ |
|------------|-------|------|-----|-----|---------|------|---------|------------|-----------|-----------|--------|--------|--------|
| EPD        | +10.3 | +0.3 | +54 | +82 | +5.9    | +19  | +63     | +0.30      | -0.074    | +29.7     | +0.54  | +0.004 | +\$129 |
| RANK (Top) | 22%   | 16%  | 79% | 69% | 52%     | 48%  | 4%      | 2%         | 97%       | 2%        | 2%     | 2%     | 5%     |
| Acc.       | 5%    | 6%   | 6%  | 6%  | 2%      | 6%   | 6%      | 6%         | 5%        | 7%        | 6%     | 6%     |        |

Purchaser: ..... Price: \$ .....



# MARELLAN UPSTAIRS (P)

ID: JOBN178

BORN: 13/7/17 (26 MTHS)

RED

## LOT 11



WEEBOLLABOLLA CAMBRIDGE C3 (P)

**Sire: WEEBOLLABOLLA G358 (H) RED**

WEEBOLLABOLLA ZEE FZ124 (H)

GOBOTHERY SIRE

**Dam: GOBOTHERY F14**

GOBOTHERY COW

Top 2% Marble Score, Carcase Weight & Fat. Top 3% Maternal Weaning Weight, Top 4% Rib Eye Area, Top 6% All Purpose Index. Top 14% Milk, Top 15% Birth Weight & Top 18% Calving Ease

A tremendous bullock bull. Heaps of doing ability and performance. Cattle that are quick to fatten are the profitable ones. Tested Homozygous Polled.

| Weight | Fat | EMA | IMF | Fleck | Scrotal | Morph. | Mot. |
|--------|-----|-----|-----|-------|---------|--------|------|
|        |     |     |     |       |         | 86%    | 75%  |

|            | CE    | BW   | WW  | YW  | CE-Mat. | MILK | Mat. WW | Marble Sc. | Yield Grd | Carc. Wt. | R.E.A. | FAT    | API \$ |
|------------|-------|------|-----|-----|---------|------|---------|------------|-----------|-----------|--------|--------|--------|
| EPD        | +10.8 | +0.2 | +53 | +81 | +6.2    | +23  | +66     | +0.30      | -0.004    | +30       | +0.39  | +0.013 | +\$128 |
| RANK (Top) | 18%   | 15%  | 82% | 72% | 46%     | 14%  | 3%      | 2%         | 98%       | 2%        | 4%     | 2%     | 6%     |
| Acc.       | 5%    | 6%   | 6%  | 6%  | 2%      | 6%   | 6%      | 6%         | 6%        | 7%        | 7%     | 6%     |        |

Purchaser: ..... Price: \$ .....

# MARELLAN UC (H)

ID: JOBN175

BORN: 1/7/17 (26 MTHS)

RED & WHITE

## LOT 12



WEEBOLLABOLLA FINLAY F120 (S)

**Sire: WEEBOLLABOLLA J95 (H) (RLW)**

WEEBOLLABOLLA BILLABONG B109 (P)

GOBOTHERY SIRE

**Dam: GOBOTHERY F11**

GOBOTHERY COW

Top 1% Maternal Weaning Weight, Top 4% Marble Score & Fat. Top 8% Carcase Weight, Top 9% Rib Eye Area & Top 12% All Purpose Index

Lots of grunt here. Long body with thick rump. Please note: UC carries more ticks than most.

| Weight | Fat | EMA | IMF | Fleck | Scrotal | Morph. | Mot. |
|--------|-----|-----|-----|-------|---------|--------|------|
|        |     |     |     |       |         | 70%    | 70%  |

|            | CE   | BW   | WW  | YW  | CE-Mat. | MILK | Mat. WW | Marble Sc. | Yield Grd | Carc. Wt. | R.E.A. | FAT    | API \$ |
|------------|------|------|-----|-----|---------|------|---------|------------|-----------|-----------|--------|--------|--------|
| EPD        | +9.6 | +1.3 | +54 | +80 | +5.4    | +21  | +81     | +0.20      | -0.255    | +7        | +0.24  | -0.068 | +\$121 |
| RANK (Top) | 29%  | 29%  | 79% | 75% | 61%     | 32%  | 1%      | 4%         | 93%       | 8%        | 9%     | 4%     | 12%    |
| Acc.       | 0%   | 0%   | 0%  | 0%  | 0%      | 0%   | 0%      | 0%         | 0%        | 0%        | 0%     | 0%     |        |

Purchaser: ..... Price: \$ .....

# MARELLAN UMPIRE (P)

ID: JOBN165

BORN: 6/7/17 (26 MTHS)

RED

## LOT 13



MARELLAN SHORTHORNS - COMMITTED TO DNA RESEARCH

THE GROVE OSCAR A748 (P) (RED)

**Sire: WEEBOLLABOLLA G138 (P) (AI) (ET)**

WEEBOLLABOLLA VIGILANCE V113 (P) (ROAN)

GOBOTHERY SIRE

**Dam: GOBOTHERY F1**

GOBOTHERY COW

Top 1% Carcase Weight, Rib Eye Area & Fat. Top 5% Marble Score, Top 10% Birth Weight, Top 19% All Purpose Index & Top 20% Milk

An easy doing bull, to breed those quick finishing bullocks. Tested Homozygous Polled.

| Weight | Fat | EMA | IMF | Fleck | Scrotal | Morph. | Mot. |
|--------|-----|-----|-----|-------|---------|--------|------|
|        |     |     |     |       |         | 91%    | 80%  |

|            | CE   | BW   | VW  | YW  | CE-Mat. | MILK | Mat. VW | Marble Sc. | Yield Grd | Carc. Wt. | REA   | FAT    | API \$ |
|------------|------|------|-----|-----|---------|------|---------|------------|-----------|-----------|-------|--------|--------|
| EPD        | +7.9 | -0.7 | +50 | +77 | +4.4    | +22  | +47     | +0.14      | -0.023    | +38.8     | +0.64 | +0.024 | +\$116 |
| RANK (Top) | 52%  | 10%  | 88% | 82% | 77%     | 20%  | 69%     | 5%         | 98%       | 1%        | 1%    | 1%     | 19%    |
| Acc        | 23%  | 29%  | 28% | 29% | 6%      | 29%  | 30%     | 27%        | 25%       | 30%       | 31%   | 25%    |        |

Purchaser: ..... Price: \$ .....

# MARELLAN UNSPEAKABLE (P)

ID: JOBN138

BORN: 14/7/17 (26 MTHS)

ROAN

## LOT 14



YAMBURGAN EMPEROR E103 (P)

**Sire: MARELLAN PRINCE CASPIAN (P) (ET)**

MARELLAN ISOBEL 7152 (P)

ROYALLA IMITATOR (P)

**Dam: WARRABERRY KERRIE J123 (P) (SFA)**

WARRABERRY KERRIE (P)

Top 6% Yield Grade, Top 11% Milk & Top 15% Birth Weight

A really top bull. An ideal combination of carcase shape, doing ability and performance. Both Prince Caspian and Imitator are the easy doing, easy muscle types.

| Weight | Fat | EMA | IMF | Fleck | Scrotal | Morph. | Mot. |
|--------|-----|-----|-----|-------|---------|--------|------|
|        |     |     |     |       |         | 87%    | 90%  |

|            | CE   | BW   | VW  | YW  | CE-Mat. | MILK | Mat. VW | Marble Sc. | Yield Grd | Carc. Wt. | REA   | FAT    | API \$ |
|------------|------|------|-----|-----|---------|------|---------|------------|-----------|-----------|-------|--------|--------|
| EPD        | +6.9 | +0.1 | +49 | +73 | +6.2    | +24  | +48     | -0.22      | -0.41     | -23.4     | +0.05 | -0.104 | +\$99  |
| RANK (Top) | 68%  | 15%  | 89% | 87% | 46%     | 11%  | 58%     | 94%        | 6%        | 94%       | 55%   | 82%    | 79%    |
| Acc        | 29%  | 36%  | 43% | 35% | 11%     | 32%  | 32%     | 30%        | 26%       | 34%       | 30%   | 29%    |        |

Purchaser: ..... Price: \$ .....



# The DNA Revolution



2019 has seen Marellan Shorthorns step into the Genomics world, undergoing **complete herd 50K DNA profiling**. This combined with Shorthorns Beef's pioneering move to the IGS performance recording system has meant that for the first time ever, DNA enhanced breeding values will be available at a Shorthorn Bull Sale in Australia. We see great benefit in having DNA profiles on our whole herd. Going forward, every animal including culls, will have a TSU taken at weaning. This will confirm parenting, add to the accuracies of our performance recording and help to identify superior individuals, speeding up genetic progress in our herd.

All DNA and performance recording systems must always be done in the context of environmental survivability. For us, identification of superior genes is firstly about the Northern Environment. Because of our unique environmental setting for a Shorthorn herd, 'great' genes that come in a 'snowflake' package are of no value. Genotype progress and Environmental Phenotype progress must go hand in hand. Over time, we look forward to identification of gene's that have northern relevance, so we can further propagate superior animals. Genomics is an exciting frontier in the push towards speeding up genetic progress. But like all great break throughs, as we learn more it can also reveal to us just how much we still don't know.

**The Marellan Shorthorn 'Bred for Bos Indicus Cows' Bull Sale will be the first ever Shorthorn Bull Sale in Australia with DNA enhanced breeding values.**

## MARELLAN UNENDING (P)

ID: JOBN171

BORN: 4/7/17 (26 MTHS)

RED

## LOT 15



GOBOTHERY SIRE

**Sire: GOBOTHERY UNKNOWN**

GOBOTHERY COW

GOBOTHERY SIRE

**Dam: GOBOTHERY F1**

GOBOTHERY COW

Top 3% Fat, Top 14% Birth Weight & Marble Score, Top 17% All Purpose Index & Top 18% Carcase Weight

I love the length, and structure of this bull. Sire is unknown due to inconclusive DNA test. But what is known is that he is a survivor, a bull that will breed great bullocks and replacement F1 females.

| Weight | Fat | EMA | IMF | Fleck | Scrotal | Morph. | Mot. |
|--------|-----|-----|-----|-------|---------|--------|------|
|        |     |     |     |       |         | 84%    | 70%  |

|            | CE   | BW  | WW  | YW  | CE-Mat. | MILK | Mat. WW | Marble Sc. | Yield Grd | Carc. Wt. | R.E.A. | FAT    | API \$ |
|------------|------|-----|-----|-----|---------|------|---------|------------|-----------|-----------|--------|--------|--------|
| EPD        | +9.2 | 0   | +56 | +86 | +5.5    | +21  | +49     | +0.02      | -0.113    | -1.3      | +0.03  | -0.026 | +\$117 |
| RANK (Top) | 33%  | 14% | 74% | 57% | 59%     | 30%  | 57%     | 14%        | 97%       | 18%       | 64%    | 3%     | 17%    |
| Acc        | 22%  | 29% | 29% | 29% | 7%      | 29%  | 29%     | 28%        | 26%       | 34%       | 31%    | 26%    |        |

Purchaser: ..... Price: \$ .....



# MARELLAN UTILITARIAN (P)

ID: JOBN148 (Herd Bull)

BORN: 22/7/17 (26 MTHS)

RED

## LOT 16



YAMBURGAN TOBERMOREY F090 (P)

**Sire: MOOMBI TOBY (P)**

MOOMBI ISOBEL G72 (P) (ET)

YOOROOGA SIRE

**Dam: YOOROOGA 555**

YOOROOGA COW

A long bodied, thick made bull. he has a strong topline and rump. An athletic bull that will breed shape and performance. Utilitarian is backed by some very influential female lines.

| Weight | Fat | EMA | IMF | Fleck | Scrotal | Morph. | Mot. |
|--------|-----|-----|-----|-------|---------|--------|------|
|        |     |     |     |       |         | 75%    | 85%  |

Purchaser: ..... Price: \$ .....

# NO GRAIN - NOT EVER

# MARELLAN ULURU (P)

ID: JOBN166

BORN: 10/7/17 (26 MTHS)

WHITE

## LOT 17



WEEBOLLABOLLA FINLAY F120 (S)

**Sire: WEEBOLLABOLLA J95 (H) (RLW)**

WEEBOLLABOLLA BILLABONG B109 (P)

GOBOTHERY SIRE

**Dam: GOBOTHERY F2**

GOBOTHERY COW

Top 1% Fat, Top 2% Marble Score, Top 3% Carcase Weight & Milk, Top 6% Rib Eye Area, Top 8% All Purpose Index, Top 11% Birth Weight, Top 16% Maternal Weaning Weight & Top 18% Calving Ease

A good white with plenty of growth. Uluru will breed 100% roan calves if used over red cows.

| Weight | Fat | EMA | IMF | Fleck | Scrotal | Morph. | Mot. |
|--------|-----|-----|-----|-------|---------|--------|------|
|        |     |     |     |       |         | 91%    | 90%  |

|            | CE    | BW   | WW  | YW  | CE-Mat. | MILK | Mat. WW | Marble Sc. | Yield Grd | Carc. Wt. | R.E.A. | FAT    | API \$ |
|------------|-------|------|-----|-----|---------|------|---------|------------|-----------|-----------|--------|--------|--------|
| EPD        | +10.9 | -0.4 | +50 | +80 | +6.5    | +29  | +54     | +0.33      | +0.103    | +26.3     | +0.3   | +0.051 | +\$124 |
| RANK (Top) | 18%   | 11%  | 88% | 76% | 41%     | 3%   | 16%     | 2%         | 99%       | 3%        | 6%     | 1%     | 8%     |
| Acc        | 23%   | 29%  | 29% | 29% | 6%      | 29%  | 29%     | 29%        | 26%       | 31%       | 32%    | 25%    |        |

Purchaser: ..... Price: \$ .....



*Bred for*  
**Bos Indicus**



**marellan**  
shorthorns

Any Age. Any Market. Every Tastebud!



**marellan**  
shorthorns

Any Age. Any Market. Every Tastebud!

**Join the Roast**



JBS  
"Thousand Guineas"  
Shorthorn Beef



**marellan**  
shorthorns

Any Age. Any Market. Every Tastebud!

**Or Keep the**





# Indicus Cows

## an Revolution



## m Red Instead





# MARELLAN UNIVERSE (P)

ID: JOBN172

BORN: 12/7/17 (26 MTHS)

WHITE

## LOT 18



Neil & Margaret Dunbar's Shorthorn X Santa Weaners

THE GROVE OSCAR A748 (P)

**Sire: WEEBOLLABOLLA HIGGINS H82 (P)**

WEEBOLLABOLLA JILLAROO Z49 (P)

GOBOTHERY SIRE

**Dam: GOBOTHERY F8**

GOBOTHERY COW

Top 1% Marble Score, Milk & Fat. Top 2% Carcase Weight & Rib Eye Area, Top 5% All Purpose Index & Top 8% Birth Weight

Another white, very similar to lot 17. A nice growthy bull to breed those unmistakeable roans. Tested Homozygous Polled.

| Weight | Fat | EMA | IMF | Fleck | Scrotal | Morph. | Mot. |
|--------|-----|-----|-----|-------|---------|--------|------|
|        |     |     |     |       |         | 88%    | 85%  |

|            | CE   | BW   | WW  | YW  | CE-Mat. | MILK | Mat. WW | Marble Sc. | Yield Grd | Carc. Wt. | REA   | FAT    | API \$ |
|------------|------|------|-----|-----|---------|------|---------|------------|-----------|-----------|-------|--------|--------|
| EPD        | +8.5 | -1.4 | +44 | +69 | +5.1    | +32  | +54     | +0.39      | +0.053    | +33.8     | +0.53 | +0.048 | +\$129 |
| RANK (Top) | 43%  | 8%   | 95% | 91% | 66%     | 1%   | 17%     | 1%         | 99%       | 2%        | 2%    | 1%     | 5%     |
| Acc.       | 22%  | 30%  | 30% | 30% | 7%      | 29%  | 29%     | 28%        | 26%       | 32%       | 31%   | 27%    |        |

Purchaser: ..... Price: \$ .....

# MARELLAN UNUSUAL (P)

ID: JOBN177

BORN: 9/7/17 (26 MTHS)

RED

## LOT 19



Mitch Warden's Champion Yearling Steer, Biloela Show, 382 Kilos at 9 Mths

WEEBOLLABOLLA FINLAY F120 (S)

**Sire: WEEBOLLABOLLA J95 (H) (RLW)**

WEEBOLLABOLLA BILLABONG B109 (P)

GOBOTHERY SIRE

**Dam: GOBOTHERY F13**

GOBOTHERY COW

Top 1% Marble Score. Top 2% Carcase Weight & Fat. Top 3% Maternal Weaning Weight & Rib Eye Area. Top 5% All Purpose Index, Top 9% Milk & Top 13% Birth Weight

A big long, bullock bull. Please note, Unusual was picked on by his peer group, affecting his condition but not his breeding potential.

| Weight | Fat | EMA | IMF | Fleck | Scrotal | Morph. | Mot. |
|--------|-----|-----|-----|-------|---------|--------|------|
|        |     |     |     |       |         | 90%    | 75%  |

|            | CE   | BW   | WW  | YW  | CE-Mat. | MILK | Mat. WW | Marble Sc. | Yield Grd | Carc. Wt. | REA   | FAT    | API \$ |
|------------|------|------|-----|-----|---------|------|---------|------------|-----------|-----------|-------|--------|--------|
| EPD        | +9.7 | -0.2 | +50 | +77 | +5.5    | +24  | +66     | +0.37      | -0.026    | +32.2     | +0.42 | +0.005 | +\$129 |
| RANK (Top) | 27%  | 13%  | 88% | 82% | 59%     | 9%   | 3%      | 1%         | 98%       | 2%        | 3%    | 2%     | 5%     |
| Acc.       | 5%   | 6%   | 6%  | 6%  | 2%      | 6%   | 6%      | 6%         | 6%        | 7%        | 7%    | 6%     |        |

Purchaser: ..... Price: \$ .....

# MARELLAN UPPER CUT (H)

ID: JOBN128

BORN: 12/7/17 (26 MTHS)

RED

## LOT 20



MARELLAN MR SLICK (P)

**Sire: MARELLAN PROPHET (P) RED**

MARELLAN IDA 9442 (P)

MARELLAN PRINCE CASPIAN (P)

**Dam: WARRABERRY MEME K248 (P) ROAN**

WARRABERRY MEME D66 (P)

Top 10% Birth Weight, Top 14% Calving Ease - Maternal, Top 16% Fat & Top 17% Calving Ease

A tremendous slick coated performance bull with carcass. I can't wait to see his bullocks. Prophet X Prince Caspian is a good combo. Please note that UpperCut has very little vision in one eye, from an injury as a calf. But that won't stop him breeding super good bullocks.

| Weight | Fat | EMA | IMF | Fleck | Scrotal | Morph. | Mot. |
|--------|-----|-----|-----|-------|---------|--------|------|
|        |     |     |     |       |         | 97%    | 75%  |

|            | CE  | BW   | WW  | YW  | CE-Mat. | MILK | Mat. WW | Marble Sc. | Yield Grd | Carc. Wt. | R.E.A. | FAT   | API \$ |
|------------|-----|------|-----|-----|---------|------|---------|------------|-----------|-----------|--------|-------|--------|
| EPD        | +11 | -0.7 | +49 | +70 | +8.8    | +17  | +42     | -0.18      | -0.341    | -13.6     | +0.07  | -0.09 | +\$104 |
| RANK (Top) | 17% | 10%  | 90% | 91% | 14%     | 68%  | 91%     | 91%        | 47%       | 72%       | 50%    | 16%   | 58%    |
| Acc.       | 35% | 44%  | 40% | 40% | 15%     | 34%  | 34%     | 32%        | 28%       | 32%       | 34%    | 29%   |        |

Purchaser: ..... Price: \$ .....

# MARELLAN UKULELE (H)

ID: JOBN085

BORN: 12/11/17 (22 MTHS)

RED

## LOT 21



MARELLAN MR SLICK (P)

**Sire: MARELLAN PROPHET (P) RED**

MARELLAN IDA 9442 (P)

MARELLAN PHIL KEARNS (P)

**Dam: MARELLAN BRONWYN 4050 (P)**

MARELLAN BRONWYN 2248 (P) (APX)

Top 5% Calving Ease, Top 9% Birth Weight, Top 11% Calving Ease - Maternal & Top 14% All Purpose Index

A slick coated bull with doing ability and carcass shape. His dam will enter our ET program after she calves. 1/8 Brahman. Please note Ukulele is only 22 months, he is a top young bull with tremendous survivability and thriveability.

| Weight | Fat | EMA | IMF | Fleck | Scrotal | Morph. | Mot. |
|--------|-----|-----|-----|-------|---------|--------|------|
|        |     |     |     |       |         | 91%    | 80%  |

|            | CE    | BW   | WW  | YW  | CE-Mat. | MILK | Mat. WW | Marble Sc. | Yield Grd | Carc. Wt. | R.E.A. | FAT    | API \$ |
|------------|-------|------|-----|-----|---------|------|---------|------------|-----------|-----------|--------|--------|--------|
| EPD        | +15.4 | -0.9 | +59 | +85 | +9.2    | +12  | +41     | -0.19      | -0.353    | -8.5      | +0.13  | -0.096 | +\$119 |
| RANK (Top) | 5%    | 9%   | 59% | 60% | 11%     | 92%  | 91%     | 92%        | 33%       | 47%       | 29%    | 36%    | 14%    |
| Acc.       | 28%   | 40%  | 41% | 42% | 11%     | 32%  | 35%     | 28%        | 27%       | 35%       | 35%    | 25%    |        |

Purchaser: ..... Price: \$ .....



# MARELLAN UNIQUE (P)

ID: JOBN093

BORN: 3/10/17 (23 MTHS)

RED

## LOT 22



YAMBURGAN SPARTA F149 (P)

**Sire: YAMBURGAN SPARTAN K442 (P) RED**

YAMBURGAN COUNTESS G98 (P)

MARELLAN NICODEMUS (P)

**Dam: MARELLAN CARNATION 4181 (P) RLW**

MARELLAN CARNATION 0214 (P)

Top 4% Fat & Top 25% Marble Score

Unique has great butterfly loin and good smooth body. You can see the slight content in this bull. 1/8 Brahman. Unique is a good scanning bull.

| Weight | Fat | EMA | IMF | Fleck | Scrotal | Morph. | Mot. |
|--------|-----|-----|-----|-------|---------|--------|------|
|        |     |     |     |       |         | 86%    | 75%  |

|            | CE   | BW   | WW  | YW  | CE-Mat. | MILK | Mat. WW | Marble Sc. | Yield Grd | Carc. Wt. | R.E.A. | FAT   | API \$ |
|------------|------|------|-----|-----|---------|------|---------|------------|-----------|-----------|--------|-------|--------|
| EPD        | +7.5 | +1.6 | +61 | +85 | +6.5    | +13  | +43     | -0.02      | -0.219    | -14.9     | -0.08  | -0.06 | +\$112 |
| RANK (Top) | 58%  | 34%  | 48% | 61% | 41%     | 91%  | 87%     | 25%        | 96%       | 78%       | 88%    | 4%    | 30%    |
| Acc        | 28%  | 39%  | 41% | 42% | 12%     | 34%  | 37%     | 31%        | 27%       | 34%       | 31%    | 29%   |        |

Purchaser: ..... Price: \$ .....

# MARELLAN UNDERLINE (P)

ID: JOBN169

BORN: 22/7/17 (26 MTHS)

RED

## LOT 23



WEEBOLLABOLLA FINLAY F120 (S)

**Sire: WEEBOLLABOLLA K220 (P) (AI) (ET)**

WEEBOLLABOLLA VIGILANCE V113 (P)

GOBOTHERY SIRE

**Dam: GOBOTHERY F5**

GOBOTHERY COW

Top 1% Carcase Weight & Fat. Top 2% Marble Score & Rib Eye Area. Top 4% All Purpose Index, Top 7% Birth Weight & Milk

A structurally sound bull with a neat body and nice carcase type. A good mid-maturity sire that will produce calves with shape.

| Weight | Fat | EMA | IMF | Fleck | Scrotal | Morph. | Mot. |
|--------|-----|-----|-----|-------|---------|--------|------|
|        |     |     |     |       |         | 88%    | 85%  |

|            | CE   | BW   | WW  | YW  | CE-Mat. | MILK | Mat. WW | Marble Sc. | Yield Grd | Carc. Wt. | R.E.A. | FAT    | API \$ |
|------------|------|------|-----|-----|---------|------|---------|------------|-----------|-----------|--------|--------|--------|
| EPD        | +8.8 | -1.5 | +45 | +69 | +5.1    | +25  | +47     | +0.36      | +0.036    | +36.1     | +0.53  | +0.037 | +\$133 |
| RANK (Top) | 38%  | 7%   | 94% | 92% | 66%     | 7%   | 65%     | 2%         | 99%       | 1%        | 2%     | 1%     | 4%     |
| Acc        | 23%  | 29%  | 29% | 29% | 6%      | 30%  | 30%     | 29%        | 26%       | 34%       | 31%    | 25%    |        |

Purchaser: ..... Price: \$ .....



# MARELLAN ULVERSTONE (P)

# LOT 24

ID: JOBP099

BORN: 24/10/17 (23 MTHS)

RED

BYLAND MISSION 6RD112 (IMP USA) (P)

**Sire: MARELLAN LAND LORD (P) (ET) (AI)**

MARELLAN CAMELOT 4248 (P)

MARELLAN OIL SKIN (P) (APX)

**Dam: MARELLAN ELLA 4145 (P) RED**

MARELLAN ELLA 2105 (P)

Top 11% Milk & Top 24% Calving Ease - Maternal

Slick Skinned, smooth body and smooth shoulders. Lard Lord has bred some good progeny in the north. Tested homozygous Polled.

| Weight | Fat | EMA | IMF | Fleck | Scrotal | Morph. | Mot. |
|--------|-----|-----|-----|-------|---------|--------|------|
|        |     |     |     |       |         | 79%    | 85%  |

|            | CE   | BW    | WW  | YW  | CE-Mat. | MILK | Mat. WW | Marble Sc. | Yield Grd | Carc. Wt. | REA    | FAT     | API \$ |
|------------|------|-------|-----|-----|---------|------|---------|------------|-----------|-----------|--------|---------|--------|
| EPD        | +8.4 | +1.15 | +48 | +70 | +7.7    | +24  | +48     | -0.035     | -0.353    | -21.35    | -0.065 | -0.1005 | +\$110 |
| RANK (Top) | 44%  | 27%   | 92% | 90% | 24%     | 11%  | 65%     | 30%        | 33%       | 92%       | 86%    | 61%     | 36%    |
| Acc.       | 33%  | 52%   | 45% | 46% | 22%     | 35%  | 37%     | 27%        | 27%       | 36%       | 34%    | 23%     |        |

Purchaser: ..... Price: \$ .....

# MARELLAN U SEE (P)

# LOT 25

ID: JOBP065

BORN: 22/10/17 (23 MTHS)

RED

MARELLAN ON TARGET (P)

**Sire: MARELLAN ROB SIMMONS (P) RED**

MARELLAN CAMELOT 9055M (P)

WD MR SMOOTH (ET) (P)

**Dam: ROYALLA FULLGLOSS 7261K (P) (APX)**

ROYALLA FULLGLOSS I5320 (P)

Top 11% Calving Ease & Birth Weight, Top 14% Calving Ease - Maternal, Top 17% Milk & Top 18% All Purpose Index

A really smooth coated, smooth bodied bull. A ¾ bull whose dam is still going strong at 12 yrs, having had a calf every year since she was 2. Tested Homozygous Polled.

| Weight | Fat | EMA | IMF | Fleck | Scrotal | Morph. | Mot. |
|--------|-----|-----|-----|-------|---------|--------|------|
|        |     |     |     |       |         | 92%    | 90%  |

|            | CE    | BW   | WW  | YW  | CE-Mat. | MILK | Mat. WW | Marble Sc. | Yield Grd | Carc. Wt. | REA    | FAT     | API \$ |
|------------|-------|------|-----|-----|---------|------|---------|------------|-----------|-----------|--------|---------|--------|
| EPD        | +12.4 | -0.4 | +51 | +75 | +8.8    | +22  | +48     | -0.11      | -0.348    | -24.7     | -0.105 | -0.0985 | +\$116 |
| RANK (Top) | 11%   | 11%  | 87% | 85% | 14%     | 17%  | 64%     | 68%        | 39%       | 96%       | 90%    | 48%     | 18%    |
| Acc.       | 33%   | 42%  | 40% | 39% | 14%     | 34%  | 36%     | 30%        | 29%       | 38%       | 34%    | 28%     |        |

Purchaser: ..... Price: \$ .....

# MARELLAN USHER (P)

# LOT 26

ID: JOBN142 (Herd Bull)

BORN: 20/7/17 (26 MTHS)

RED

THE GROVE D851 (P)

**Sire: ROYALLA PROVENENCE H352 (P) RED**

MARELLAN BELINDA J6032 (P)

YOOROOGA BRED

**Dam: MERENDEE 235 (P) RED**

YOOROOGA BRED

A thick made mid-maturity bull. The easy doing bull with a thick carcase, to breed those quick finishing types. Paternal brother to lot 6.

| Weight | Fat | EMA | IMF | Fleck | Scrotal | Morph. | Mot. |
|--------|-----|-----|-----|-------|---------|--------|------|
|        |     |     |     |       |         | 95%    | 90%  |

Purchaser: ..... Price: \$ .....

# SHORTHORNS IN THE TICKS

# MARELLAN UNFREEZE (P)

ID: JOBN129

BORN: 10/7/17 (26 MTHS)

ROAN

## LOT 27



MARELLAN LAND LORD (P)

**Sire: MARELLAN PREMIUM (P) WHITE**

ROYALLA MELLODY I15321 (H)

MARELLAN LUDWIG 8267 (P)

**Dam: WARRABERRY LOUISE G91 (P) (SCR)**

WARRABERRY LOUISE D138 (P)

Top 5% Fat, Top 6% Carcase Weight, Top 8% Rib Eye Area, Top 18% Marble Score & Top 22% Birth Weight

An extra degree of doing ability here, but no compromise on the carcase to get it. A real no holes bull. Backed by generations of easy doing genetics. Tested Homozygous Polled.

| Weight | Fat | EMA | IMF | Fleck | Scrotal | Morph. | Mot. |
|--------|-----|-----|-----|-------|---------|--------|------|
|        |     |     |     |       |         | 97%    | 85%  |

|            | CE   | BW   | WW  | YW  | CE-Mat. | MILK | Mat. WW | Marble Sc. | Yield Grd | Carc. Wt. | R.E.A. | FAT    | API \$ |
|------------|------|------|-----|-----|---------|------|---------|------------|-----------|-----------|--------|--------|--------|
| EPD        | +6.2 | +0.8 | +47 | +68 | +5.3    | +16  | +39     | 0          | -0.264    | +11.1     | +0.27  | -0.075 | +\$98  |
| RANK (Top) | 77%  | 22%  | 92% | 92% | 62%     | 81%  | 94%     | 18%        | 92%       | 6%        | 8%     | 5%     | 81%    |
| Acc        | 28%  | 34%  | 33% | 34% | 11%     | 32%  | 32%     | 32%        | 28%       | 34%       | 34%    | 29%    |        |

Purchaser: ..... Price: \$ .....

# MARELLAN ULTIMATE (P)

ID: JOBN079

BORN: 29/10/17 (24 MTHS)

ROAN

## LOT 28



MARELLAN ON TARGET (P)

**Sire: MARELLAN ROB SIMMONS (P) RED**

MARELLAN CAMELOT 9055M (P)

MARELLAN NICODEMUS (P)

**Dam: MARELLAN DUCHESS 2176 (P) ROAN**

MARELLAN DAINTY DUCHESS 9358 (P)

Top 24% Yield Grade

A real standout as a calf, a bull with an ability to work in large paddocks. I like his easy doing type. Dam has become a top donor female, after proving her fertility, low tick burden and breeding capability. Maybe our best Nicodemus daughter. Grand dam, Duchess 9358 is also still in the herd. Tested Homozygous Polled.

| Weight | Fat | EMA | IMF | Fleck | Scrotal | Morph. | Mot. |
|--------|-----|-----|-----|-------|---------|--------|------|
|        |     |     |     |       |         | 84%    | 85%  |

|            | CE   | BW   | WW  | YW  | CE-Mat. | MILK | Mat. WW | Marble Sc. | Yield Grd | Carc. Wt. | R.E.A. | FAT  | API \$ |
|------------|------|------|-----|-----|---------|------|---------|------------|-----------|-----------|--------|------|--------|
| EPD        | +7.2 | +1.5 | +54 | +78 | +6.1    | +19  | +46     | -0.29      | -0.363    | -15.2     | +0.04  | -0.1 | +\$102 |
| RANK (Top) | 62%  | 32%  | 79% | 80% | 48%     | 55%  | 78%     | 97%        | 24%       | 79%       | 59%    | 59%  | 67%    |
| Acc        | 30%  | 38%  | 36% | 36% | 11%     | 34%  | 35%     | 29%        | 28%       | 34%       | 34%    | 28%  |        |

Purchaser: ..... Price: \$ .....



# MARELLAN UNION (P)

## LOT 29

ID: JOBN135

BORN: 13/7/17 (26 MTHS)

RED

WEEBOLLABOLLA BOSWORTH B90 (P)

**Sire: MARELLAN NICODEMUS (P) (AI) ROAN**

MARELLAN ISOBEL 7152 (P)

MARELLAN LUDWIG 8267 (P)

**Dam: WARRABERRY BEC G30 (P) ROAN**

WARRABERRY BEC (P)

Top 4% Fat & Top 11% Marble Score

Soft muscle type with doing ability, sired by the great Nicodemus. He won't look his best on sale day as he is often on the fringe.

| Weight | Fat | EMA | IMF | Fleck | Scrotal | Morph. | Mot. |
|--------|-----|-----|-----|-------|---------|--------|------|
|        |     |     |     |       |         | 97%    | 70%  |

|            | CE   | BW   | WW  | YW  | CE-Mat. | MILK | Mat. WW | Marble Sc. | Yield Grd | Carc. Wt. | REA   | FAT    | API \$ |
|------------|------|------|-----|-----|---------|------|---------|------------|-----------|-----------|-------|--------|--------|
| EPD        | +5.9 | +2.4 | +50 | +67 | +5.9    | +18  | +43     | +0.04      | -0.227    | -22       | -0.05 | -0.048 | +\$101 |
| RANK (Top) | 81%  | 50%  | 88% | 92% | 52%     | 60%  | 88%     | 11%        | 95%       | 93%       | 83%   | 4%     | 71%    |
| Acc        | 32%  | 40%  | 39% | 39% | 16%     | 35%  | 35%     | 29%        | 28%       | 37%       | 35%   | 27%    |        |

Purchaser: ..... Price: \$ .....

# MARELLAN UNFAIR (H)

## LOT 30

ID: JOBN134

BORN: 18/7/17 (26 MTHS)

ROAN

YAMBURGAN EMPEROR E103 (P)

**Sire: MARELLAN PRINCE CASPIAN (P) ROAN**

MARELLAN ISOBEL 7152 (P)

MARELLAN KNAPSACK (P)

**Dam: WARRABERRY F87 (P) (SCR) RED**

WARRABERRY COW

Top 9% Marble Score, Top 11% fat, Top 18% Calving Ease - Maternal, Top 20% Calving Ease & Top 21% All Purpose Index.

A really soft bull, an extra degree of finishing ability here. Would suit Euro infused Bos Indicus females. Data and type indicates he should be OK to use on heifers.

| Weight | Fat | EMA | IMF | Fleck | Scrotal | Morph. | Mot. |
|--------|-----|-----|-----|-------|---------|--------|------|
|        |     |     |     |       |         | 86%    | 75%  |

|            | CE    | BW   | WW  | YW  | CE-Mat. | MILK | Mat. WW | Marble Sc. | Yield Grd | Carc. Wt. | REA   | FAT    | API \$ |
|------------|-------|------|-----|-----|---------|------|---------|------------|-----------|-----------|-------|--------|--------|
| EPD        | +10.6 | +2.4 | +57 | +80 | +8.3    | +20  | +48     | +0.06      | -0.294    | -10.8     | -0.01 | -0.087 | +\$115 |
| RANK (Top) | 20%   | 50%  | 66% | 76% | 18%     | 42%  | 58%     | 9%         | 86%       | 58%       | 75%   | 11%    | 21%    |
| Acc        | 32%   | 39%  | 39% | 40% | 16%     | 36%  | 37%     | 30%        | 30%       | 39%       | 34%   | 31%    |        |

Purchaser: ..... Price: \$ .....

# MARELLAN UNI (H)

## LOT 31

ID: JOBN139

BORN: 17/7/17 (26 MTHS)

ROAN

MARELLAN UNDESTRUCTABLE (P)

**Sire: ROYALLA NEXT OF KIN F261 (P) ROAN**

MARELLAN REDWING J6065 (P)

WARRABERRY FARLEY (P)

**Dam: WARRABERRY ROYAL FLUSH J94 (P)**

YAMBURGAN B269 (P)

Top 24% All Purpose Index

A really soft Roan. Please note, Uni is not suited to all productions systems as he carries more ticks and hair than most.

| Weight | Fat | EMA | IMF | Fleck | Scrotal | Morph. | Mot. |
|--------|-----|-----|-----|-------|---------|--------|------|
|        |     |     |     |       |         | 85%    | 70%  |

|            | CE   | BW   | WW  | YW  | CE-Mat. | MILK | Mat. WW | Marble Sc. | Yield Grd | Carc. Wt. | REA   | FAT  | API \$ |
|------------|------|------|-----|-----|---------|------|---------|------------|-----------|-----------|-------|------|--------|
| EPD        | +3.7 | +3.2 | +65 | +94 | +2.8    | +16  | +49     | -0.03      | -0.307    | -6.4      | -0.01 | -0.1 | +114   |
| RANK (Top) | 93%  | 68%  | 29% | 34% | 92%     | 76%  | 53%     | 27%        | 80%       | 37%       | 75%   | 59%  | 24%    |
| Acc        | 30%  | 39%  | 36% | 36% | 15%     | 36%  | 36%     | 28%        | 31%       | 38%       | 38%   | 31%  |        |

Purchaser: ..... Price: \$ .....

# MARELLAN VINTAGE (P) (ET)

ID: JOBP003

BORN: 12/2/18 (19 MTHS)

ROAN

## LOT 32



RONELLE PARK EAGLE (P)

**Sire: RONELLE PARK HURRICANE H242 (P)**

NARRALDA ZENA C080 (P)

WEEBOLLABOLLA THEODORE (P)

**Dam: MARELLA CAMELOT 5214 (P) RED**

MARELLAN CAMELOT 12th (P)

Top 6% Carcase Weight, Top 10% Rib Eye Area & Top 18% Carcase Weight

An outstanding young bull. Vintage combines structure, shape and doing ability so well. Camelot 5214 is still going strong at 14 years.

| Weight | Fat | EMA | IMF | Fleck | Scrotal | Morph. | Mot. |
|--------|-----|-----|-----|-------|---------|--------|------|
|        |     |     |     |       |         | 82%    | 80%  |

|            | CE   | BW   | WW  | YW  | CE-Mat. | MILK | Mat. WW | Marble Sc. | Yield Grd | Carc. Wt. | REA   | FAT    | API \$ |
|------------|------|------|-----|-----|---------|------|---------|------------|-----------|-----------|-------|--------|--------|
| EPD        | +5.0 | +1.6 | +59 | +83 | +4.0    | +20  | +49     | -0.15      | -0.406    | -1.2      | +0.23 | -0.116 | +\$107 |
| RANK (Top) | 88%  | 34%  | 59% | 67% | 83%     | 44%  | 54%     | 86%        | 6%        | 18%       | 10%   | 99%    | 48%    |
| Acc        | 35%  | 44%  | 41% | 41% | 17%     | 37%  | 38%     | 36%        | 32%       | 40%       | 40%   | 31%    |        |

Purchaser: ..... Price: \$ .....

# MARELLAN VICAR (P) (ET)

ID: JOBP018

BORN: 22/2/18 (19 MTHS)

ROAN

## LOT 33



WEEBOLLABOLLA BOSWORTH B90 (P)

**Sire: MARELLAN NICODEMUS (P) ROAN**

MARELLAN ISOBEL 7152 (P)

MARELLAN INDESTRUCTABLE (P)

**Dam: MARELLAN SUSAN 0280 (P) RED**

MARELLAN SUSAN 7297K (P)

Top 8% Fat, Top 9% Marble Score & Top 24% Calving Ease - Maternal

A growthy Nicodemus son, will breed top bullocks. Dam handles ticks with ease.

| Weight | Fat | EMA | IMF | Fleck | Scrotal | Morph. | Mot. |
|--------|-----|-----|-----|-------|---------|--------|------|
|        |     |     |     |       |         | 97%    | 80%  |

|            | CE   | BW   | WW  | YW  | CE-Mat. | MILK | Mat. WW | Marble Sc. | Yield Grd | Carc. Wt. | R.E.A. | FAT    | API \$ |
|------------|------|------|-----|-----|---------|------|---------|------------|-----------|-----------|--------|--------|--------|
| EPD        | +6.5 | +3.3 | +54 | +73 | +7.6    | +21  | +47     | +0.05      | -0.249    | -23.5     | -0.28  | -0.083 | +\$105 |
| RANK (Top) | 74%  | 70%  | 80% | 88% | 24%     | 32%  | 65%     | 9%         | 93%       | 94%       | 98%    | 8%     | 55%    |
| Acc        | 36%  | 44%  | 42% | 43% | 17%     | 38%  | 39%     | 33%        | 29%       | 35%       | 36%    | 30%    |        |

Purchaser: ..... Price: \$ .....



# MARELLAN VIVID (P) (ET)

ID: JOBP013

BORN: 16/2/17 (19 MTHS)

ROAN

## LOT 34



Pictured: Marellan Rob Simmons. Sire of Lots 25 & 28

MARELLAN ON TARGET (P)

**Sire: MARELLAN RINGER (P) ROAN**

NARRALDA ISOBEL 8251L (P)

WEEBOLLABOLLA THEODORE T85 (P)

**Dam: MARELLA CAMELOT I5214 (P) RED**

MARELLAN CAMELOT 12th (P)

Top 2% Yeild Grade, Top 9% Rib Eye Area & Top 21% Milk.

Another Camelot 5214 son with growth and doing ability. Ringer was a high growth bull with great length. Tested Homozygous Polled.

| Weight | Fat | EMA | IMF | Fleck | Scrotal | Morph. | Mot. |
|--------|-----|-----|-----|-------|---------|--------|------|
|        |     |     |     |       |         | 64%    | 70%  |

|            | CE   | BW   | WW  | YW  | CE-Mat. | MILK | Mat. WW | Marble Sc. | Yield Grd | Carc. Wt. | REA   | FAT    | API \$ |
|------------|------|------|-----|-----|---------|------|---------|------------|-----------|-----------|-------|--------|--------|
| EPD        | +5.0 | +1.6 | +54 | +79 | +3.8    | +22  | +49     | -0.37      | -0.477    | -16.5     | +0.25 | -0.117 | +\$96  |
| RANK (Top) | 88%  | 34%  | 78% | 78% | 85%     | 21%  | 56%     | 98%        | 2%        | 83%       | 9%    | 99%    | 85%    |
| Acc        | 32%  | 38%  | 36% | 37% | 14%     | 36%  | 37%     | 30%        | 27%       | 36%       | 34%   | 25%    |        |

Purchaser: ..... Price: \$ .....

# MARELLAN VEROSITY (P) (ET)

ID: JOBP014

BORN: 9/2/18 (19 MTHS)

RED LITTLE WHITE

## LOT 35



RONELLE PARK EAGLE (P)

**Sire: RONELLE PARK HURRICANE H242 (P)**

NARRALDA ZENA C080 (P)

LACHLAN C335 (P)

**Dam: MARELLAN CAMELOT 0078 (P) RED**

MARELLAN CAMELOT 5214 (P)

Top 4% Rib Eye Area, Top 20% Fat, Top 17% Carcase Weight, Top 20% Milk & Maternal Weaning Weight. Top 21% Yeild Grade

A thick made bull with good doing ability. Mid-Maturity pattern bull that will breed quick finishing progeny. Full brother to 5.

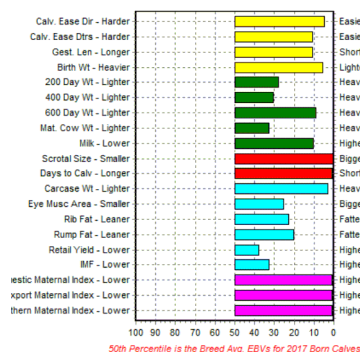
| Weight | Fat | EMA | IMF | Fleck | Scrotal | Morph. | Mot. |
|--------|-----|-----|-----|-------|---------|--------|------|
|        |     |     |     |       |         | 86%    | 75%  |

|            | CE   | BW   | WW  | YW  | CE-Mat. | MILK | Mat. WW | Marble Sc. | Yield Grd | Carc. Wt. | REA   | FAT    | API \$ |
|------------|------|------|-----|-----|---------|------|---------|------------|-----------|-----------|-------|--------|--------|
| EPD        | +6.6 | +2.2 | +63 | +89 | +5.3    | +22  | +53     | -0.21      | -0.366    | -0.8      | +0.35 | -0.086 | +\$106 |
| RANK (Top) | 73%  | 45%  | 39% | 49% | 62%     | 20%  | 20%     | 93%        | 21%       | 17%       | 4%    | 10%    | 52%    |
| Acc        | 33%  | 42%  | 41% | 41% | 16%     | 36%  | 37%     | 35%        | 30%       | 38%       | 35%   | 31%    |        |

Purchaser: ..... Price: \$ .....



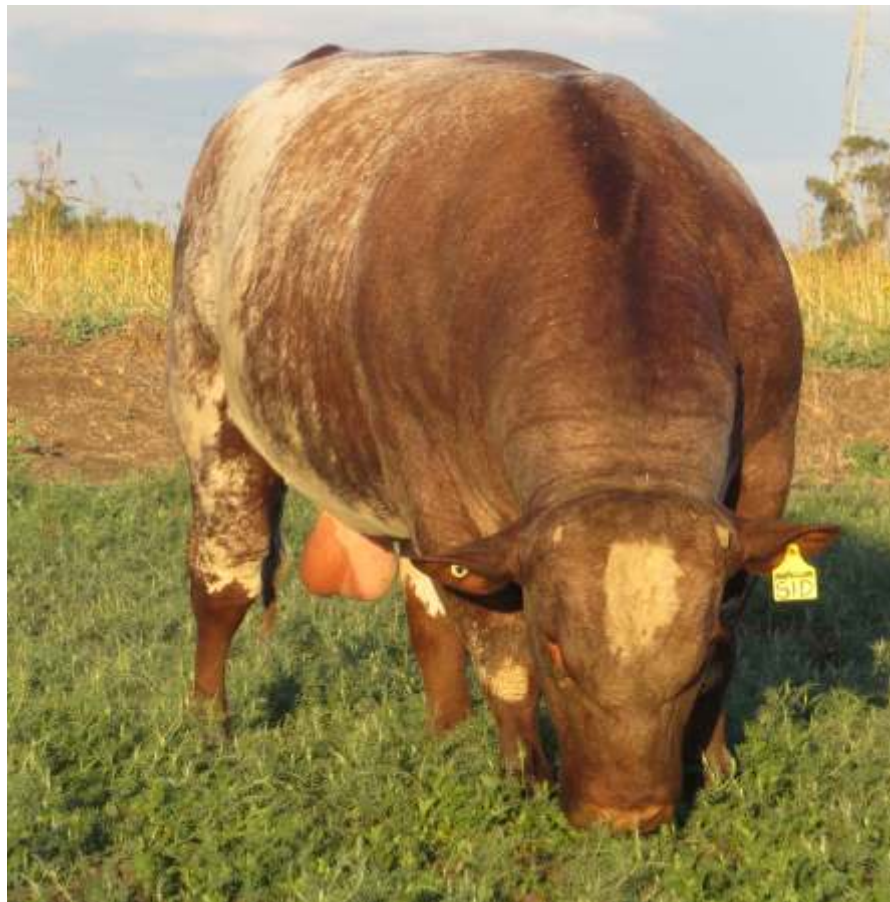
EBV Percentiles for MARELLAN SID (P)



## Looking to the future

### Marellan Sid.

The first sons of this magnificent sire will sell in our 2020 Bull Sale.



## MARELLAN VETERAN (P)

ID: JOBP026

BORN: 13/3/18 (18 MTHS)

RED

# LOT 36



Pictured: Marellan U-Turn, maternal brother to Lot 36.  
Picured after his first breeding season at "Craven", Alpha.

SPRYS ISABELLA'S MASTER F293 (P)

**Sire: MARELLAN QUEENSLANDER (P) (ET)**

ROYALLA MARGIES MEMORY 9054M (P)

MARELLAN HERCULES 4090 (P)

**Dam: MARELLAN ELLA 7329K (P) (SFA) RED**

MARELLAN ELLA (P) (SFA)

Top 4% Yeild Grade, Top 8% Maternal Weaning Weight,  
Top 9% WW, Top 13% YW & Top 14% Rib Eye Area

A moderate framed bull with carcass shape. Queenslander bred some outstanding Droughtmaster X Shorthorn progeny for Appleton Cattle Co.. Ella 7329 is still going strong at 12 yrs, handling everything that we and the environment have thrown at her. Tested Homozygous Polled.

| Weight | Fat | EMA | IMF | Fleck | Scrotal | Morph. | Mot. |
|--------|-----|-----|-----|-------|---------|--------|------|
|        |     |     |     |       |         | 94%    | 85%  |

|            | CE   | BW   | WW  | YW   | CE-Mat. | MILK | Mat. WW | Marble Sc. | Yield Grd | Carc. Wt. | R.E.A. | FAT    | API \$ |
|------------|------|------|-----|------|---------|------|---------|------------|-----------|-----------|--------|--------|--------|
| EPD        | +3.9 | +5.3 | +74 | +105 | +2.7    | +20  | +57     | -0.08      | -0.44     | -21       | +0.2   | -0.101 | +\$99  |
| RANK (Top) | 92%  | 93%  | 9%  | 13%  | 92%     | 35%  | 8%      | 55%        | 4%        | 92%       | 14%    | 64%    | 77%    |
| Acc        | 32%  | 41%  | 38% | 39%  | 13%     | 35%  | 36%     | 39%        | 29%       | 36%       | 35%    | 30%    |        |

Purchaser: ..... Price: \$ .....





# The IGS & ShorGene Revolution

International Genetic Solutions (IGS) is the world's largest beef genetic evaluation system. There are nearly 19,000,000 animals currently recorded in IGS, and around 400,000 new registrations each year. IGS is backed by a great team of geneticists and is unrivalled anywhere else in the world. In 2019, Shorthorn Beef became the first breed association in Australia to offer a full suite of EPD's calculated by IGS, launched as 'ShorGene'.

The establishment of ShorGene and the move to IGS will bring about two very exciting consequences. Firstly, IGS has the ability to produce Multi-breed and Composite breed comparisons - The slow move towards breed comparisons has long hampered the Australian Beef Industry and across-breed progress. IGS only produces one evaluation for multiple breeds, this gives them tremendous efficiencies, and allows the whole database to be utilised when assessing individual animals from individual breeds. The status quo in Australia has seen animals on multiple databases given different performance figures.

The second result of the move to IGS is the ability to incorporate genomics into the performance recording system. The use of DNA to identify traits in individual animals, allows us to increase the accuracy of breeding values and tell us things that we can't see. Of course, any move towards greater identification of Genotype MUST go hand in hand with Phenotype (physical traits) progress. The actual Phenotype and traditional performance recording measures (weights etc) is what helps to further train the 'chip' (the model that is used to interpret DNA) so that we can interpret the DNA correctly. DNA verification will also greatly help with carcass data, ensuring that the correct carcass are attributed to the correct sires/dams. In turn speeding up genetic progress. Through its extensive database and DNA incorporation, IGS will help propel the Shorthorn Breed and our industry in speeding up genetic progress.

## ShorGene IGS EPD's Explained

| EPD  | Measure | Explanation   |
|------|---------|---|
| CE   | %       | Calving Ease Direct – More positive values are more favourable  |
| BW   | Pounds  | Measurement of Birth Weight – the lower the value indicates a lower weight                              |
| WW   | Pounds  | Weighing weight adjusted to 205 days – the higher the value indicates a higher weight                   |
| YW   | Pounds  | Yearling weight adjusted to 365 days – the higher the value indicates a higher weight                   |
| CE-M | %       | Calving Ease Maternal – More positive values are more favourable  |
| Milk | Pounds  | Milk – pounds of weaning due to Milk – importance depends on production environment                     |
| MWW  | Pounds  | Maternal Weaning Weight – Pounds on weaning weight due to milk and growth, via daughters in production  |
| MS   |         | Marble Score – Differences in carcass marble score. More positive values are more favourable.           |
| YG   |         | Yield Grade – Unlike RBY% Lower Yield Grade Scores are more favourable                                  |
| CWT  |         | Carcass Weight – pounds of Carcass weight   |
| REA  |         | Rib Eye Area – Rib Eye Area in square inches  |
| FAT  |         | FAT – Rib Fat in inches   |
| API  |         | All Purpose Index \$ - \$ Index that blends EPD's estimate to an animal's overall impact on bottom line |

# MARELLAN VERY CLEAN (P)

ID: JOBP002

BORN: 6/2/18 (19 MTHS)

RED

## LOT 37



WEEBOLLABOLLA QUILPIE Q18 (P)

**Sire: WEEBOLLABOLLA THEODORE T85 (P)**

WEEBOLLABOLLA NINDETHANA (P)

MARELLAN PROPHET (P) (APX)

**Dam: MARELLA ISOBEL 5088 (P) RED**

MARELLAN ISOBEL 2018 (P) (ET) (AI)

Top 7% Calving Ease & Calving Ease - Maternal, Top 9% Birth Weight, Top 13% Fat, Top 17% All Purpose Index & Top 25% Yield Grade

Soft smooth muscle and body type, performance and finishing ability. Sired by the great Theodore from one of the most influential female lines in the Shorthorn Breed, the Isobel's. They started at "Marellan" in the early 1970's and are now in over 5 Countries.

| Weight | Fat | EMA | IMF | Fleck | Scrotal | Morph. | Mot. |
|--------|-----|-----|-----|-------|---------|--------|------|
|        |     |     |     |       |         | 81%    | 70%  |

|            | CE    | BW   | WW  | YW  | CE-Mat. | MILK | Mat. WW | Marble Sc. | Yield Grd | Carc. Wt. | R.E.A. | FAT    | API \$ |
|------------|-------|------|-----|-----|---------|------|---------|------------|-----------|-----------|--------|--------|--------|
| EPD        | +14.2 | -0.9 | +52 | +75 | +10.2   | +15  | +40     | -0.12      | -0.362    | -24.3     | +0.02  | -0.088 | +\$117 |
| RANK (Top) | 7%    | 9%   | 85% | 85% | 7%      | 86%  | 93%     | 77%        | 25%       | 95%       | 66%    | 13%    | 17%    |
| Acc        | 20%   | 24%  | 23% | 23% | 16%     | 22%  | 22%     | 24%        | 21%       | 28%       | 27%    | 19%    |        |

Purchaser: ..... Price: \$ .....

# MARELLAN VET (P)

ID: JOBP021

BORN: 22/2/18 (19 MTHS)

RED

## LOT 38



SPRYS ISABELLA'S MASTER F293 (P)

**Sire: MARELLAN QUEENSLANDER (P) (ET)**

ROYALLA MARGIES MEMORY 9054M (P)

TARTRUS REDMOUNT 2365 (P)

**Dam: MARELLAN PRINCESS MARGIE 3243**

ROYALLA PRINCESS MARGIE J6258 (P)

Top 5% Fat, Top 9% Calving Ease, Top 20% Birth Weight, Top 21% Calving Ease - Maternal & Top 22% Yield Grade

Very smooth and soft muscle pattern. Good shape and skin. A really good clean polled bull. He has 25% content, but no hump, no sheath and high IMF scan. Tested Homozygous Polled.

| Weight | Fat | EMA | IMF | Fleck | Scrotal | Morph. | Mot. |
|--------|-----|-----|-----|-------|---------|--------|------|
|        |     |     |     |       |         | 82%    | 80%  |

|            | CE  | BW   | WW  | YW  | CE-Mat. | MILK | Mat. WW | Marble Sc. | Yield Grd | Carc. Wt. | R.E.A. | FAT    | API \$ |
|------------|-----|------|-----|-----|---------|------|---------|------------|-----------|-----------|--------|--------|--------|
| EPD        | +13 | +0.7 | +59 | +82 | +7.9    | +14  | +43     | -0.29      | -0.365    | -35       | +0.02  | -0.072 | +\$98  |
| RANK (Top) | 9%  | 20%  | 59% | 71% | 21%     | 89%  | 87%     | 97%        | 22%       | 99%       | 66%    | 5%     | 80%    |
| Acc        | 28% | 37%  | 35% | 35% | 10%     | 33%  | 34%     | 28%        | 29%       | 39%       | 34%    | 29%    |        |

Purchaser: ..... Price: \$ .....



# MARELLAN VALKYRIE (P) (ET)

## LOT 39

ID: JOBP007

BORN: 18/2/18 (19 MTHS)

RED

RONELLE PARK EAGLE (P)

**Sire: RONELLE PARK HURRICANE H242 (P)**

NARRALDA ZENA C080 (P)

WEEBOLLABOLLA THEODORE (P)

**Dam: MARELLAN CAMELOT 5214 (P) RED**

MARELLAN CAMELOT 12th (P)

Top 9% Yeild Grade & Rib Eye Area. Top 15% Maternal Weaning Weight & Top 23% WW

A sound made, long bodied bull with a soft muscle pattern. A flushmate to Vintage, Lot 32. Same easy doing type, but a bit more hair. Tested Homozygous Polled.

| Weight | Fat | EMA | IMF | Fleck | Scrotal | Morph. | Mot. |
|--------|-----|-----|-----|-------|---------|--------|------|
|        |     |     |     |       |         | 87%    | 75%  |

|            | CE   | BW   | WW  | YW  | CE-Mat. | MILK | Mat. WW | Marble Sc. | Yield Grd | Carc. Wt. | REA   | FAT    | API \$ |
|------------|------|------|-----|-----|---------|------|---------|------------|-----------|-----------|-------|--------|--------|
| EPD        | +5.7 | +2.7 | +67 | +97 | +4.3    | +21  | +55     | -0.1       | -0.394    | -9.9      | +0.24 | -0.096 | +\$111 |
| RANK (Top) | 83%  | 57%  | 23% | 27% | 79%     | 29%  | 15%     | 64%        | 9%        | 53%       | 9%    | 36%    | 31%    |
| Acc        | 18%  | 24%  | 22% | 22% | 11%     | 18%  | 19%     | 18%        | 18%       | 23%       | 21%   | 16%    |        |

Purchaser: ..... Price: \$ .....

# MARELLAN VIKING (P) (ET)

## LOT 40

ID: JOBP033

BORN: 22/2/18 (19 MTHS)

RED

MARELLAN ON TARGET (P)

**Sire: MARELLAN RINGER (P) ROAN**

MARELLAN ISOBEL 82151L (P)

WEEBOLLABOLLA THEODORE T85 (P)

**Dam: MARELLAN CAMELOT I5214 (P) RED**

MARELLAN CAMELOT 12TH (P)

Top 9% Yeild Grade, Top 14% Rib Eye Area & Top 20% All Purpose Index

A bigger framed performance-oriented bull. He'll breed those big heavy bullocks that weigh like lead. Tested Homozygous Polled.

| Weight | Fat | EMA | IMF | Fleck | Scrotal | Morph. | Mot. |
|--------|-----|-----|-----|-------|---------|--------|------|
|        |     |     |     |       |         | 87%    | 70%  |

|            | CE   | BW   | WW  | YW  | CE-Mat. | MILK | Mat. WW | Marble Sc. | Yield Grd | Carc. Wt. | REA  | FAT    | API \$ |
|------------|------|------|-----|-----|---------|------|---------|------------|-----------|-----------|------|--------|--------|
| EPD        | +9.3 | +1.8 | +56 | +81 | +6.5    | +20  | +48     | -0.19      | -0.393    | -8.2      | +0.2 | -0.104 | +\$115 |
| RANK (Top) | 32%  | 38%  | 72% | 72% | 41%     | 34%  | 59%     | 92%        | 9%        | 45%       | 14%  | 82%    | 20%    |
| Acc        | 29%  | 38%  | 36% | 37% | 14%     | 36%  | 37%     | 28%        | 28%       | 35%       | 34%  | 28%    |        |

Purchaser: ..... Price: \$ .....

# MARELLAN VERIFY (P) (ET)

## LOT 41

ID: JOBP011

BORN: 17/2/18 (19 MTHS)

RED

MARELLAN ON TARGET (P)

**Sire: MARELLAN RINGER (P) ROAN**

MARELLAN ISOBEL 8251L (P)

WEEBOLLABOLLA THEODORE T85 (P)

**Dam: MARELLAN CAMELOT I5214 (P) RED**

MARELLAN CAMELOT 12TH (P)

Top 4% Yeild Grade, Top 10% Rib Eye Area & Top 20% Milk

The 5th son of Camelot 5214 in the sale. An easy doing growthy bull. Tested Homozygous Polled.

| Weight | Fat | EMA | IMF | Fleck | Scrotal | Morph. | Mot. |
|--------|-----|-----|-----|-------|---------|--------|------|
|        |     |     |     |       |         | 95%    | 90%  |

|            | CE   | BW   | WW  | YW  | CE-Mat. | MILK | Mat. WW | Marble Sc. | Yield Grd | Carc. Wt. | REA   | FAT   | API \$ |
|------------|------|------|-----|-----|---------|------|---------|------------|-----------|-----------|-------|-------|--------|
| EPD        | +6.0 | +1.7 | +55 | +81 | +4.4    | +22  | +50     | -0.23      | -0.436    | -12.7     | +0.23 | -0.11 | +\$105 |
| RANK (Top) | 80%  | 36%  | 74% | 72% | 77%     | 20%  | 47%     | 95%        | 4%        | 68%       | 10%   | 96%   | 57%    |
| Acc        | 17%  | 20%  | 18% | 19% | 9%      | 18%  | 19%     | 14%        | 14%       | 17%       | 16%   | 15%   |        |

Purchaser: ..... Price: \$ .....

# MARELLAN UNDECIDED (P)

ID: JOBN016

BORN: 7/2/17 (31 MTHS)

RED LITTLE WHITE

## LOT 42



MARELLAN MR SLICK (P)

**Sire: MARELLAN PROPHET (P) RED**

MARELLAN IDA 9442 (P)

MARELLAN NUKARNI (P)

**Dam: MARELLAN SUSAN 3175 (P) RLW**

ROYALLA SUSAN 3352 (P)

Top 5% Fat, Top 7% Calving Ease & Birth Weight. Top 13% Calving Ease - Maternal

A smooth coated bull with good shape. He was our backup heifer bull if required. Tested Homozygous Polled.

| Weight | Fat | EMA | IMF | Fleck | Scrotal | Morph. | Mot. |
|--------|-----|-----|-----|-------|---------|--------|------|
|        |     |     |     |       |         | 93%    | 80%  |

|            | CE    | BW   | VW  | YW  | CE-Mat. | MILK | Mat. VW | Marble Sc. | Yield Grd | Carc. Wt. | REA   | FAT    | API \$ |
|------------|-------|------|-----|-----|---------|------|---------|------------|-----------|-----------|-------|--------|--------|
| EPD        | +14.1 | -1.6 | +47 | +69 | +9.0    | +19  | +42     | -0.19      | -0.302    | -19.5     | +0.01 | -0.074 | +\$108 |
| RANK (Top) | 7%    | 7%   | 93% | 91% | 13%     | 51%  | 90%     | 92%        | 83%       | 90%       | 68%   | 5%     | 45%    |
| Acc        | 33%   | 41%  | 42% | 43% | 13%     | 34%  | 36%     | 33%        | 25%       | 34%       | 31%   | 23%    |        |

Purchaser: ..... Price: \$ .....

# MARELLAN UNCLE HARVEY (P)

ID: JOBN400

BORN: 10/5/17 (28 MTHS)

RED

## LOT 43



SPRYS ISABELLA'S MASTER F293 (P)

**Sire: MARELLAN QUEENSLANDER (P) (ET)**

ROYALLA MARGIES MEMORY 9054M (P)

BILLABONG PHOENIX (P)

**Dam: RONDEL 1875 (H) D4**

RONDEL 1406 (P)

Registered Droughtmaster. A really unique bull with a lot to offer the Droughtmaster gene pool. Uncle Harvey, like all our bulls, has never had a mouthful of grain, silage, pellets or any hand feeding. But he still has that ready to slaughter look. An exceptionally high marbling bull. He excels in his IMF, marbling fleck, fat coverage, temperament and early scrotal. We like having a few Bos Indicus cows in our herd to help us peg the environmental survivability and northern suitability of our Shorthorn herd.

| Weight | Fat | EMA | IMF | Fleck | Scrotal | Morph. | Mot. |
|--------|-----|-----|-----|-------|---------|--------|------|
|        |     |     |     |       |         | 98%    |      |

Purchaser: ..... Price: \$ .....

# THANK YOU FOR ATTENDING OUR SALE





## INTRODUCING *the new* PREMIUM SHORTHORN BRANDED PROGRAMME

### THE STORY OF THOUSAND GUINEAS

The story begins in the North East of England in the 18th century, where Teeswater & Durham cattle breeds were being refined using selective breeding techniques by Charles and Robert Colling. This program would go on to give rise to one of the *most highly sought after beef cattle breeds* anywhere in the world... **THE SHORTHORN.**

The culmination of this breeding program was the birth of the bull Comet in 1804, who, in 1810 went on to fetch 1,000 Guineas at the Brafferton sale, breaking all records as the first bull to draw such a price tag.

**THIS BLOODLINE** would go on to be a key influencer in the Modern Shorthorn breed that is celebrated for its superb eating qualities.

### SUPERIOR IN TASTE

**WITH THOUSAND GUINEAS** you will enjoy an open texture with a buttery flavour, a great bite *and lots of juice*. Perfectly suited for that special occasion when friends, family or colleagues come together to share a richly rewarding *moment in time*.

### SPECIFICATIONS

|                          |                                      |
|--------------------------|--------------------------------------|
| BREED TYPE               | Shorthorn<br>(VERIFIED & ACCREDITED) |
| FEEDING REGIME           | Grain fed                            |
| LIVESTOCK GRADE          | YP (0-4 tooth)                       |
| EATING QUALITY ASSURANCE | MSA graded                           |
| MARBLE SCORE             | 2+                                   |
| MEAT COLOUR              | 1B - 3                               |
| FAT COLOUR               | 0 - 3                                |



WORTH ITS WEIGHT IN GOLD



### WANT TO BE PART OF THIS EXCLUSIVE BRAND?

CONTACT YOUR NEAREST  
**JBS LIVESTOCK BUYER.**

#### NSW

KEITH HAMMOND DUBBO 0428 849230  
 RICHARD SADLER TAMWORTH 0429 667866  
 TONY CLIFFORD SCONE 0428 683050  
 RON WEBSTER ARMIDALE 0428 492467  
 STEWART BULMER TENTERFIELD 0428 666973  
 ALLAN EURELL WAGGA 0428 694526  
 PETER STEER ALBURY/WODONGA 0427 343094  
 NEALE FLANAGAN ALBURY/WODONGA 0418 357133  
 RON CRUICKSHANK COWRA 0428 795620

#### QLD

SCOTT CARSWELL TOOWOOMBA 0428 727202  
 JASON CARSWELL TOOWOOMBA 0499 773878  
 JOHN NORRIS TOOWOOMBA 0427 776514  
 DAMIAN GOULD ROMA 0428 188351  
 MATT CURTIS BIGGENDAN 0427 556037  
 BRAD HALL ROLLESTON 0400 782707  
 SIMON FRASER CLERMONT 0400 314281  
 LIAM WELLER LONGREACH 0429 193612



# Shorthorns and Colour

The Shorthorn Breed has arguably the most unique colours in the beef industry. The roan colour is a Shorthorn trademark. It is often a good idea to have some roans in your feeder steers to prove the Shorthorn content. Often a price premium will be paid for Shorthorn sired calves out of Bos Indicus cows, and even when there no price premium, there is often a weight premium as compared to many other cross breeding options. But the great thing about Shorthorn colours is that you have options. Red herds that want to remain pure red can do so by using red Shorthorn bulls.

## Shorthorn Colour Descriptions

**Red** – an animal who has nearly all red hairs. Most red Shorthorn often have small patches of white on the underline or the tail.

**Red Little White (RLW)** – a predominately red animal with a patch of white.

**Red & White (R&W)** – an animal that has red and patches of white. These red and white patches are distinct and do not mix together.

**Roan** – a colour pattern where the white and red hairs are mixed together. There is an infinite number of types of roan – no two roan animals are identical in colour.

**White** – an all white animal. Some whites do still have darker tips, i.e. red looking ears and darker muzzles.

|                      | Roan Shorthorn Cow               | Red Shorthorn Cow   | White Shorthorn Cow   | Santa or Droughtmaster Cow (Red) | Red Brahman Cow   |
|----------------------|----------------------------------|---------------------|-----------------------|----------------------------------|---|
| Roan Shorthorn Bull  | 50% Roan<br>25% Red<br>25% White | 50% Roan<br>50% Red | 50% Roan<br>50% White | 50% Roan<br>50% Red              | 50% Roan<br>50% Red<br>(with limited brindle colouration) |
| Red Shorthorn Bull   | 50% Roan<br>50% Red              | 100% Red            | 100% Roan             | 100% Red                         | 100% Red<br>(with limited brindle colouration)            |
| White Shorthorn Bull | 50% Roan<br>50% White            | 100% Roan           | 100% White            | 100% Roan                        | 100% Roan<br>(with limited brindle colouration)           |



Roan Weaners, White Marellan Bull over Santa Cows – Brendan & Fiona Kemp



Brahman X Shorthorn Steers out of red, roan and white cows.

## SHORTHORN COLOUR FAQs – here are a few questions we regularly get asked:

**Q. How many roan calves will I get if I use a roan bull over my Droughtmaster cows?**

A. You should get 50% roan calves. But please note that some of those roans will only have a small amount of roan.

**Q. Can a Red bull throw roan calves (out of red cows) if he has roan parents?**

A. The colour of a bulls parents is irrelevant, this red breeds like any other red. The only addition is that if the red bull is used over roan cows he will throw some progeny that are the same 'type' of roan as his roan ancestors.

**Q. Can a Red Little White or a Red & White bull throw roan calves when joined to a red cow?**

A. No. Even a Red & White bull that has more white on his body than red. In terms of roan progeny, RLW & R&W bulls breed just as though they are solid red. The only way they will have a roan calf is if they are joined to a white or roan cow.

**Q. Will I get some brindle calves over Brahman females?**

A. The short answer is yes. Both red and grey Brahms crossed with Shorthorns can produce some brindle progeny. Most of these will only have a minor amount. In male progeny, I suspect it is testosterone linked as sometimes the amount of brindle is reduced

after castration. The amount that you will get depends on the pigmentation in your Brahms. Some may have a bit of colour, but hopefully they may also be some of the heaviest, quickest finishing and most profitable cattle you have. Some steers fatteners have told us they even prefer some brindle because they are such high performing cattle. Others have told us that their brindle cattle are the highest performing cows in their herd.

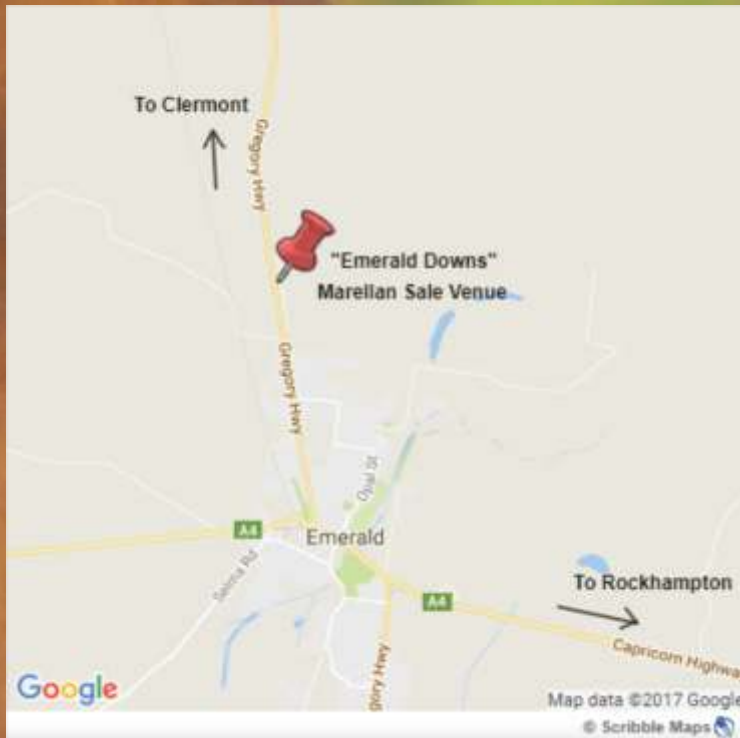
**Q. Are Roan Shorthorns easier doing than Red Shorthorns?**

A. Yes and no. We suspect (as did many of the cattleman of the past) that colour genes and doing ability genes could have some correlated link. This is my opinion, and it would be quite easy to find people who disagree. It will be interesting to see as the DNA technology gets better whether such a link can be proven. Please note; that does NOT mean that any given red is harder doing than any given roan. It simply means that the roan colour is a great asset to the breed and we will continue to produce cattle that are roan and have immediate roan ancestors. At the end of the day, we carefully select Shorthorn Cattle with doing ability, and commercial profitability, no matter what their colour.

**Q. Is the Shorthorn white and the white Charolais the same colour?**

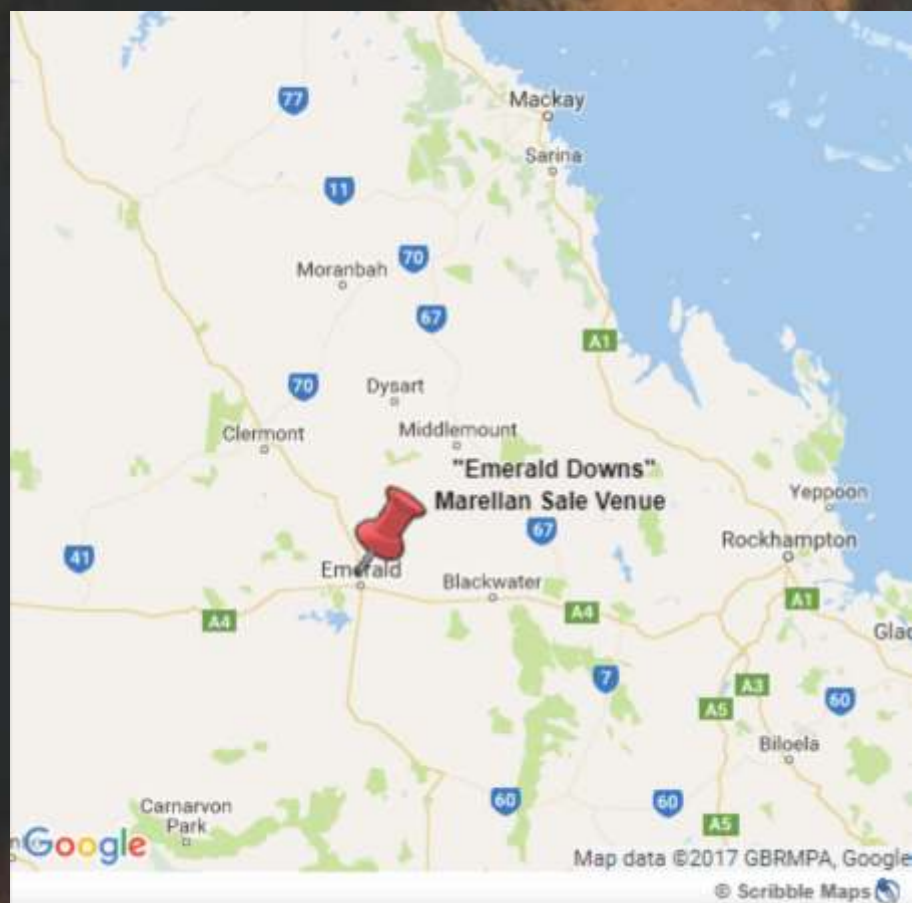
A. No. A White Charolais joined to a red Shorthorn will produce a caramel colour, not a blending of red and white colours (the traditional roan).





 **marellan**  
shorthorns  
Bred for Bos Indicus Cows!

**NO  
GRAIN  
NOT EVER**





LINCOLN & LISA JOB 0404 083 438  
EMERALD QUEENSLAND  
lincolnandlisa@marellan.com.au  
www.marellan.com.au

